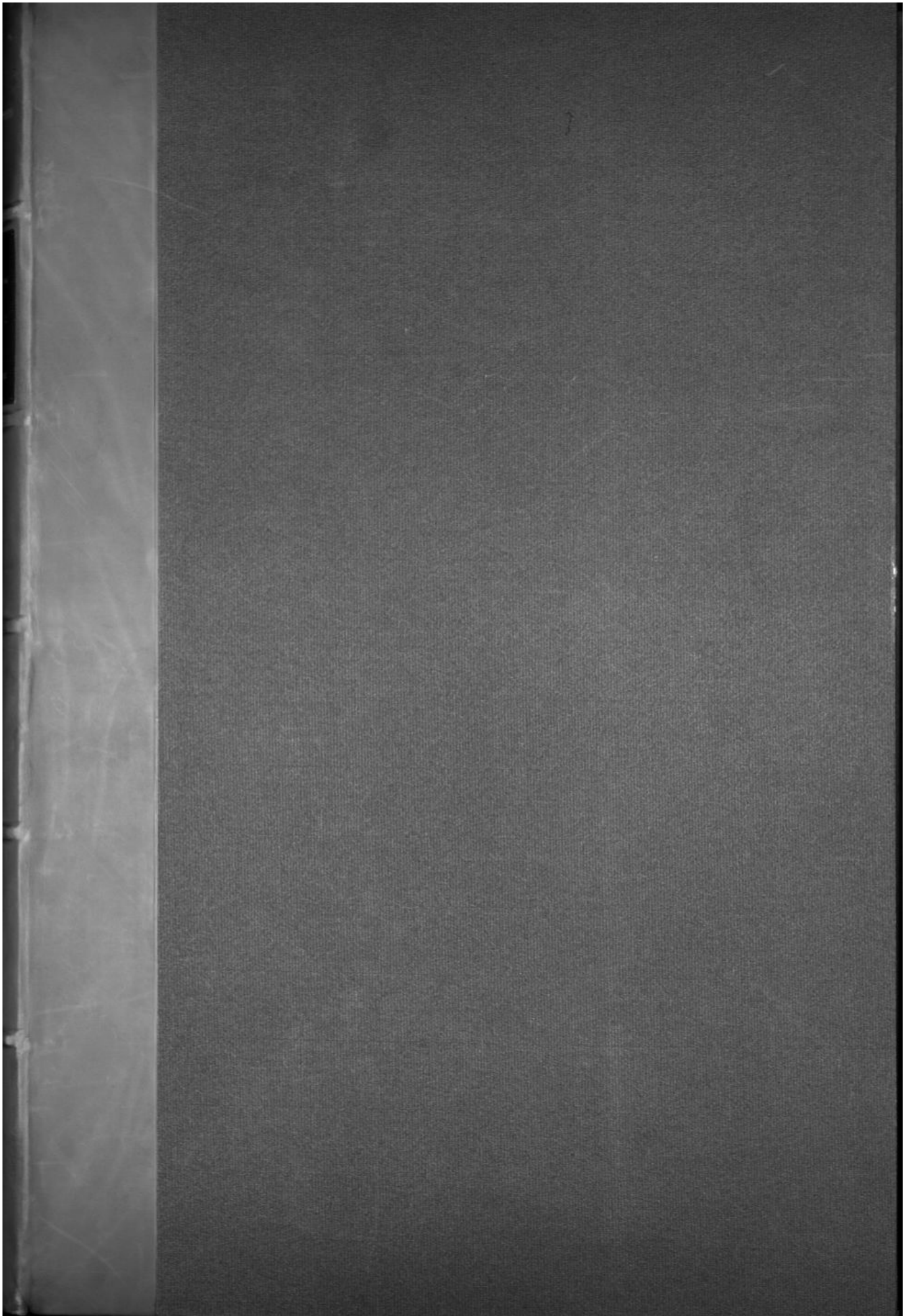


Gall, Franz Josef / Spurzheim, Johann Gaspar. Anatomie et physiologie du système nerveux en général et du cerveau en particulier, avec des observations sur la possibilité de reconnaître plusieurs dispositions intellectuelles et morales de l'homme et des animaux par la configuration de leurs têtes. Atlas

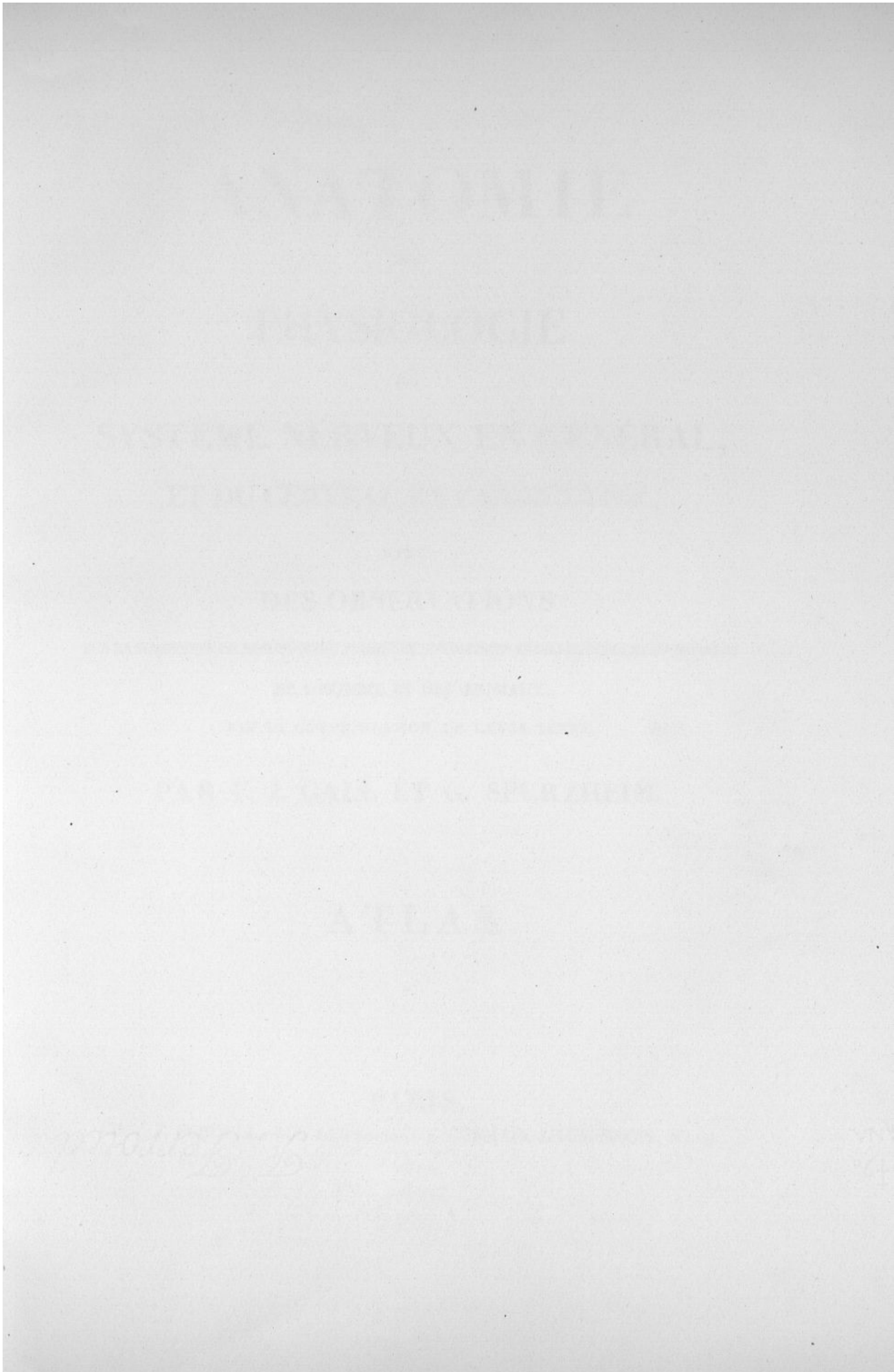
Paris : Chez F. Schoell, 1810.

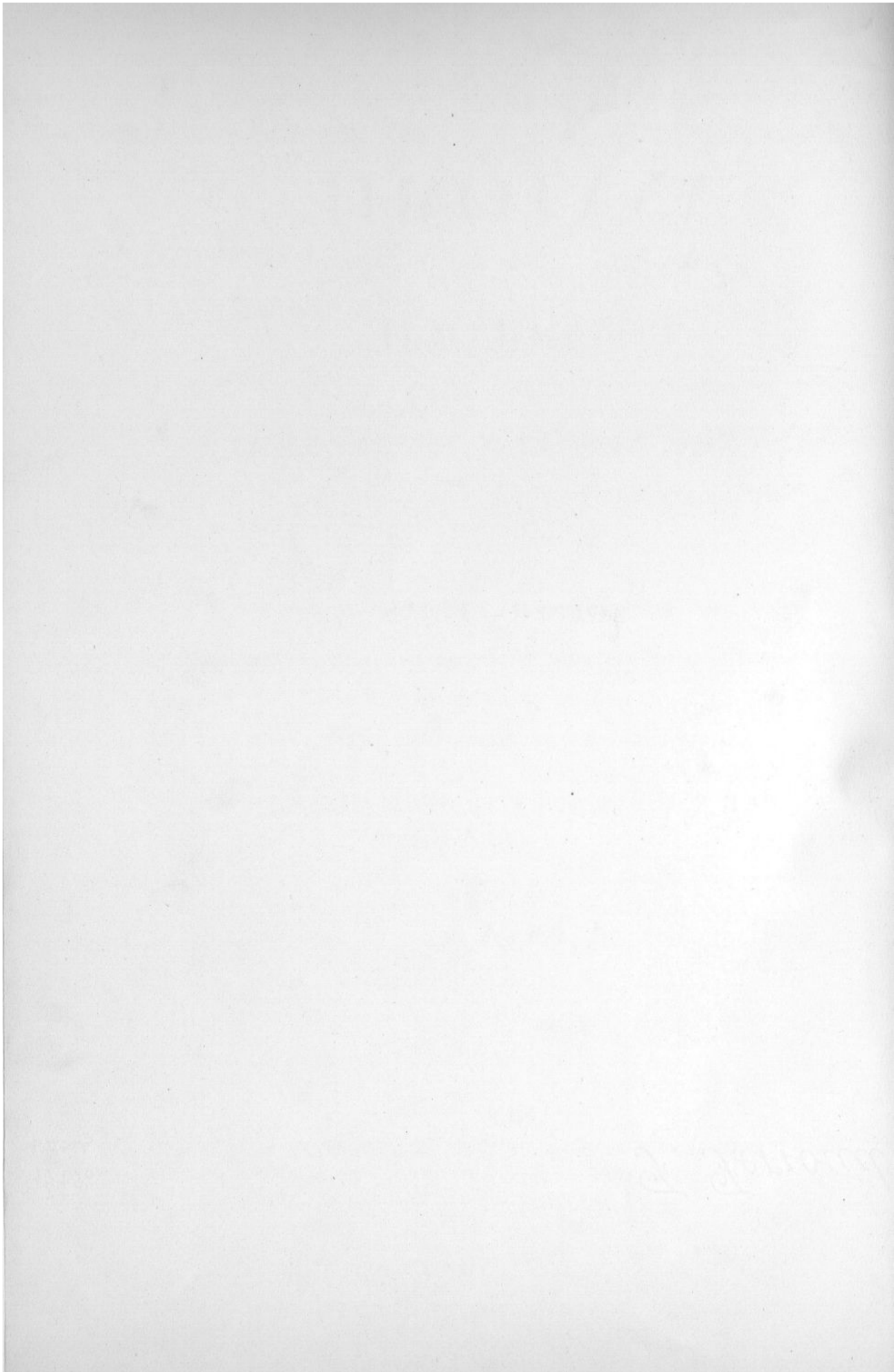
Cote : 537 bis











ANATOMIE

ET

PHYSIOLOGIE

DU

SYSTEME NERVEUX EN GÉNÉRAL, ET DU CERVEAU EN PARTICULIER,

AVEC

DES OBSERVATIONS

SUR LA POSSIBILITÉ DE RECONNOITRE PLUSIEURS DISPOSITIONS INTELLECTUELLES ET MORALES

DE L'HOMME ET DES ANIMAUX,

PAR LA CONFIGURATION DE LEURS TÊTES,

PAR F. J. GALL ET G. SPURZHEIM.

ATLAS.

PARIS,

CHEZ F. SCHOELL, RUE DES FOSSÉS S. GERMAIN-L'AUXERROIS, N°. 29.

1810.



233 H

ANATOMIE

ET

PHYSIOLOGIE

DE

SYSTEME NERVEUX EN GENERAL

ET DE CERVEAU EN PARTICULIER

AVEC

DE L'IMPRIMERIE DE L. HAUSSMANN ET D'HAUTEL.

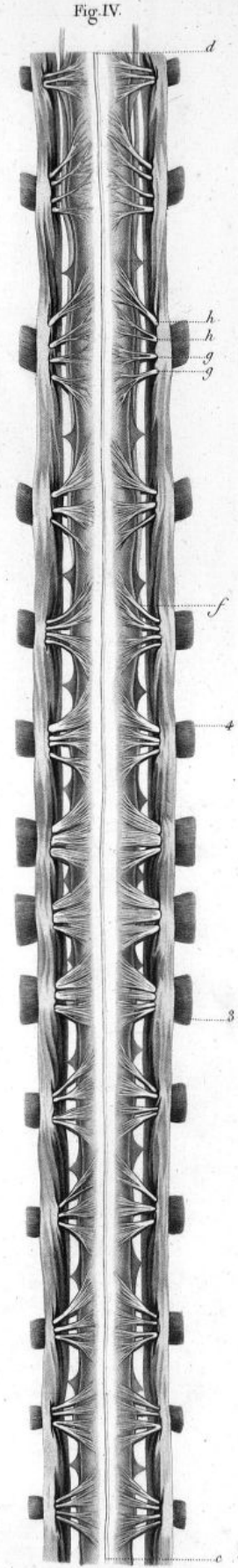
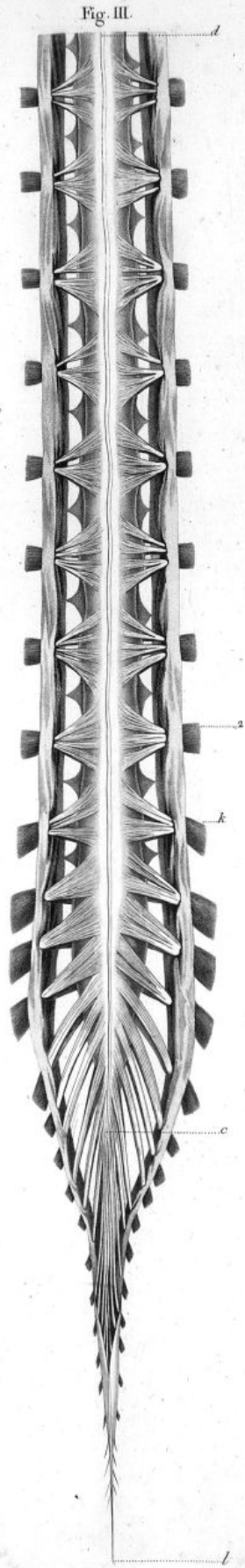
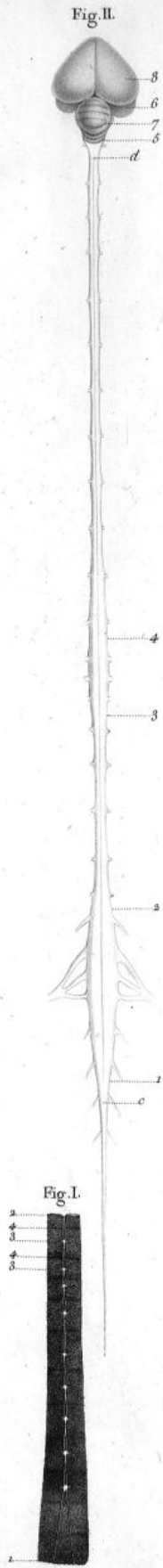
PAR M. J. GAIL ET G. SPURZHEIM.

ATLAS

PARIS

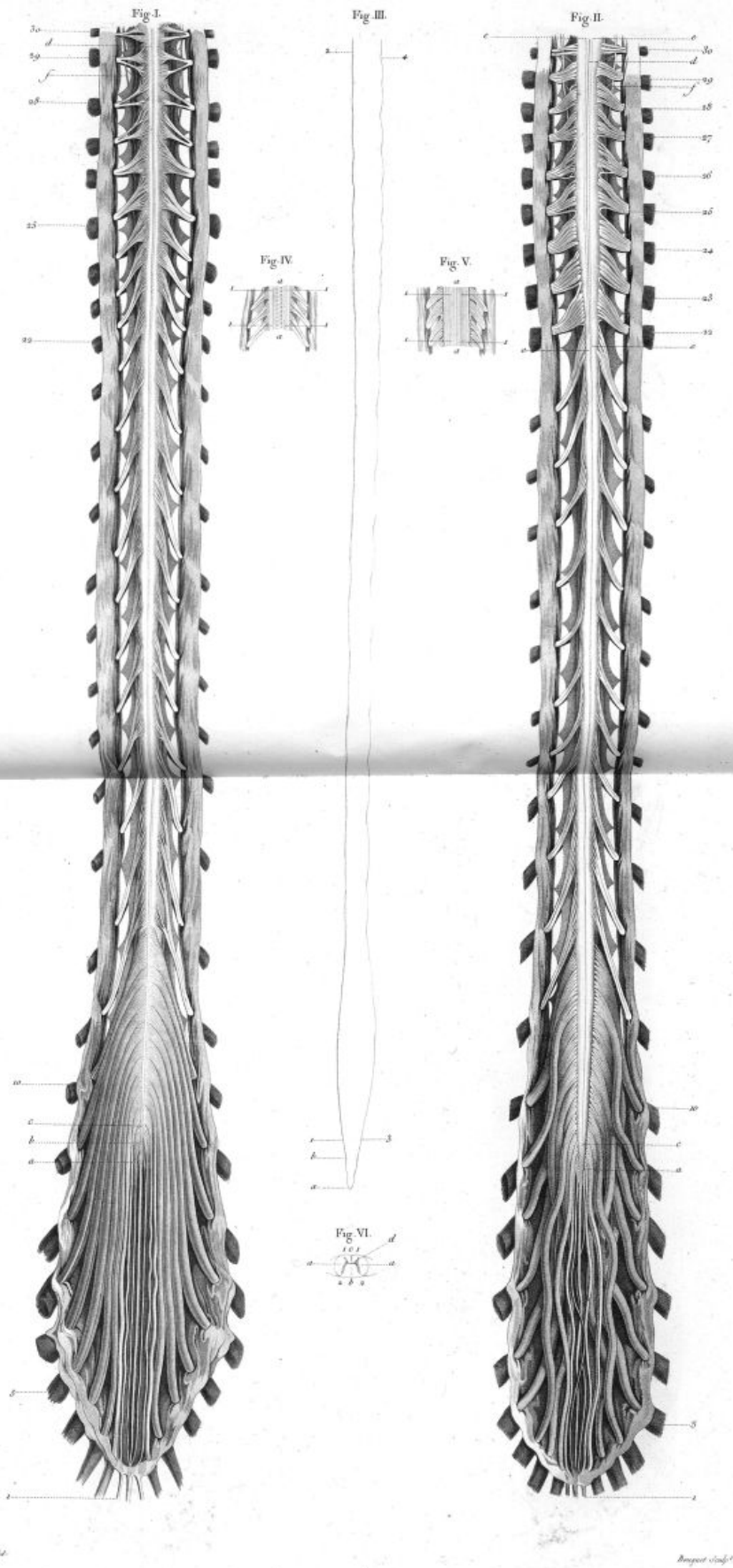
1810

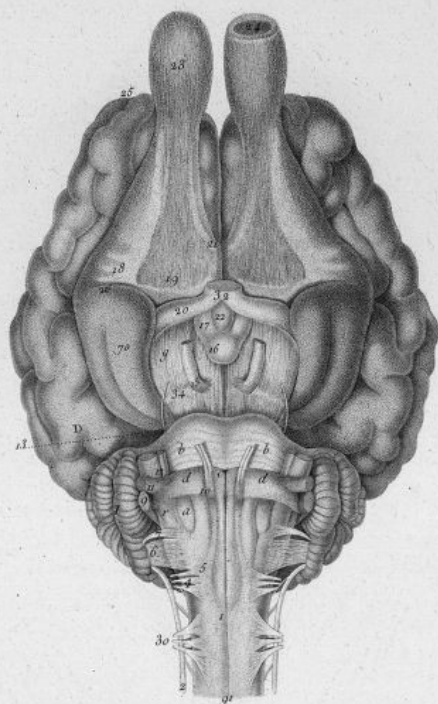




Prêtre del.

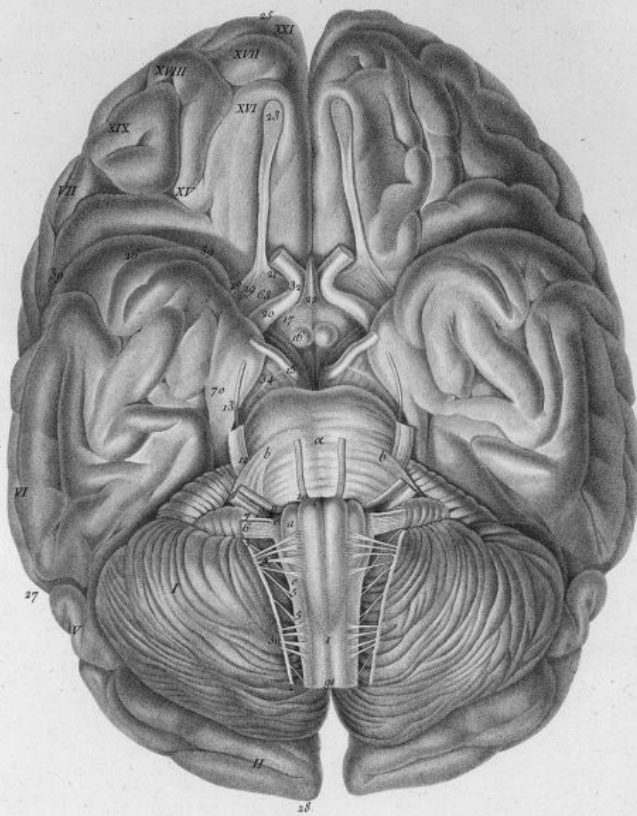
Bouquet Sculp.





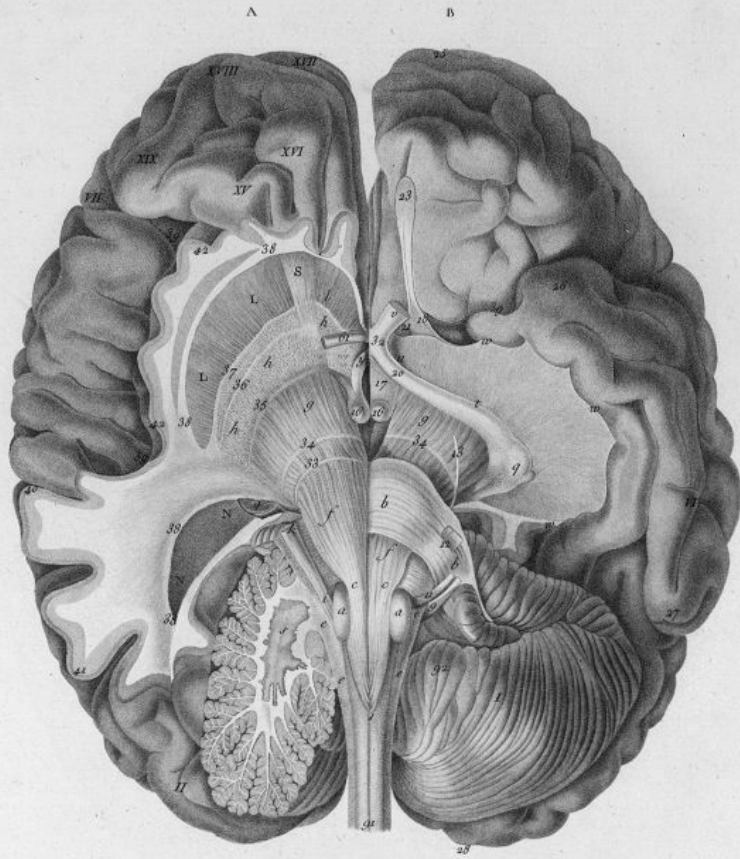
Wilson del.

Benquet sculp.



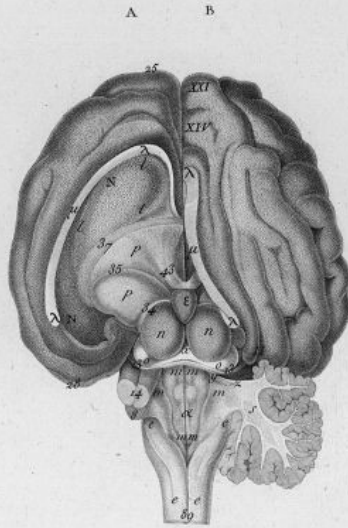
Boissac del.

Beauguet sculp.



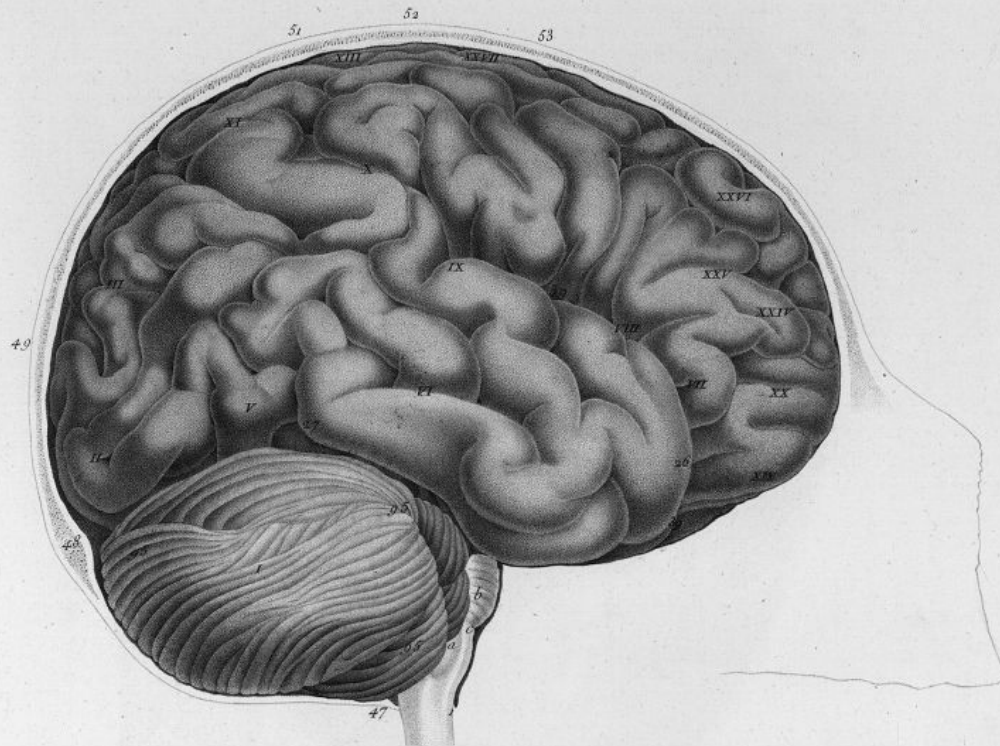
Frères del.

Bouquet Sculp.



Prêtre del.

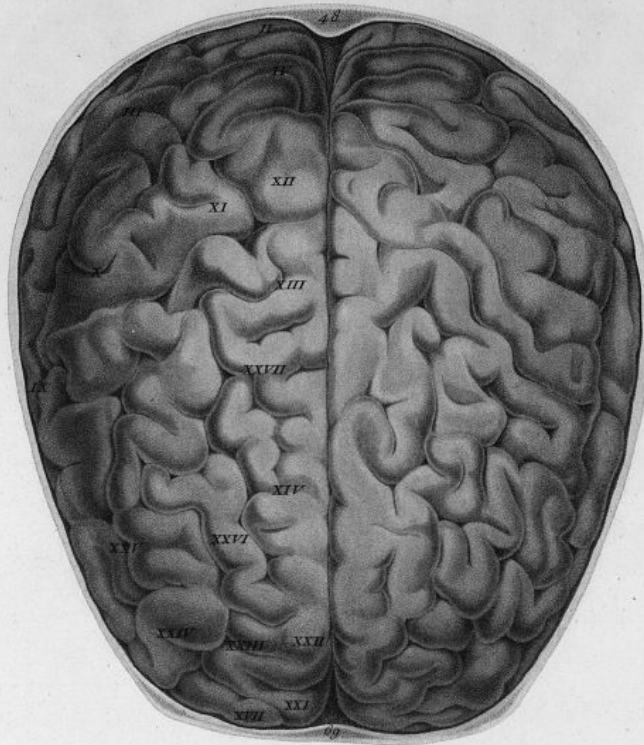
Bouquet Sculp.



Prêtre del.

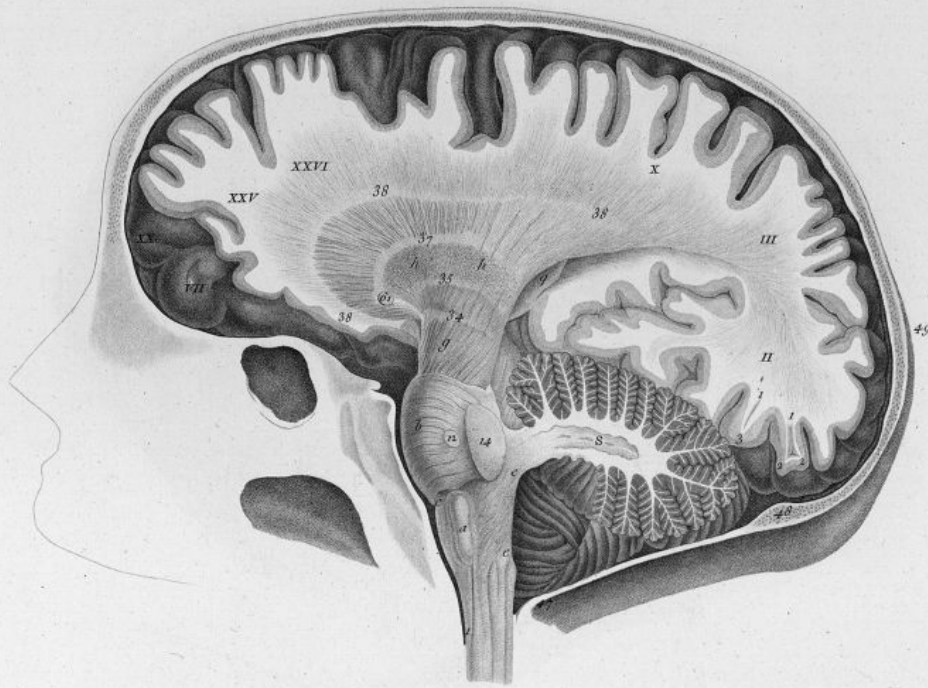
Beaugrand sculp.

PL. IX.



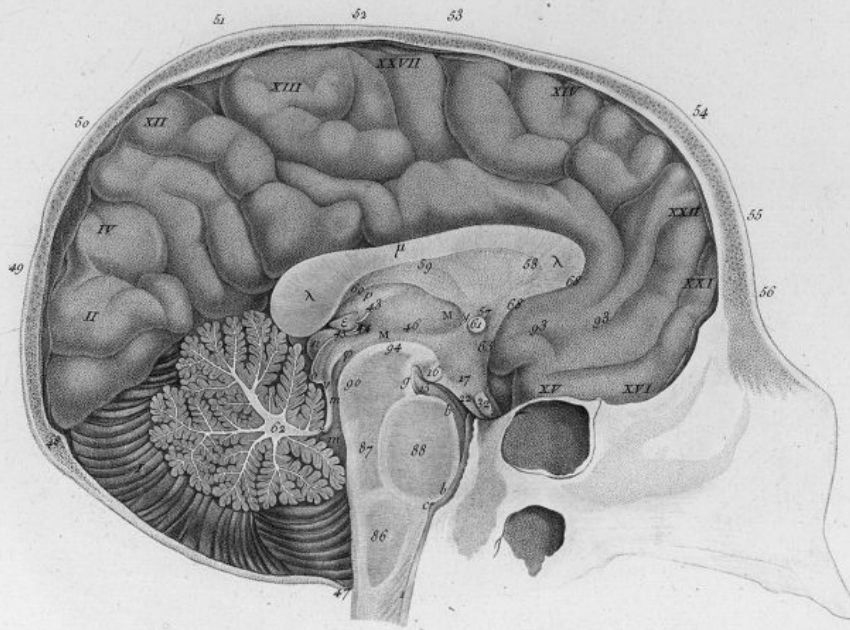
Prêtre del.

Bouquet Sculp.



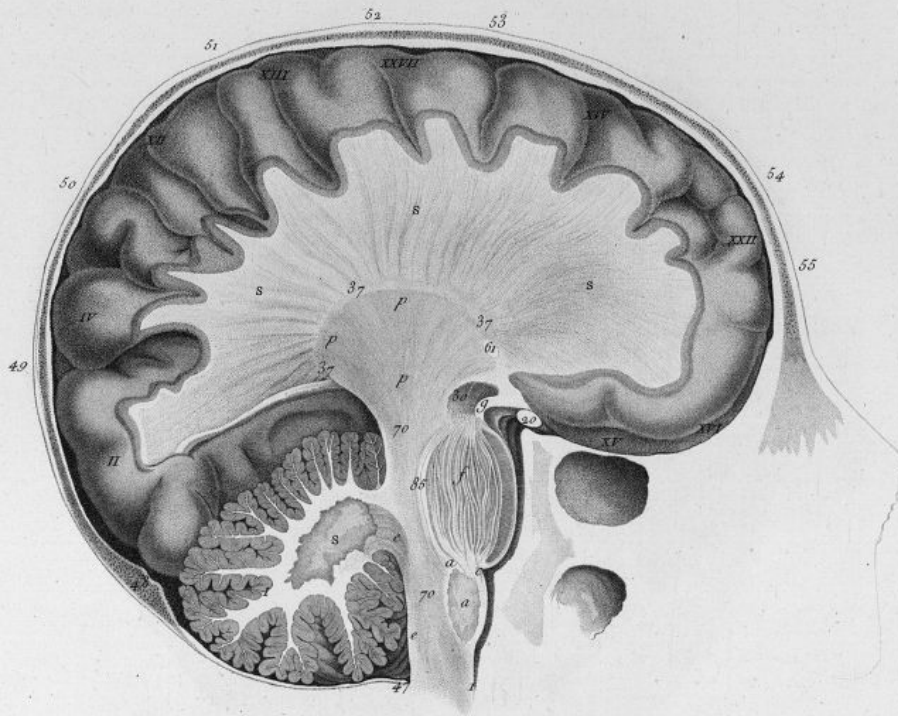
Prêtre del.

Bouquet Sculp^t



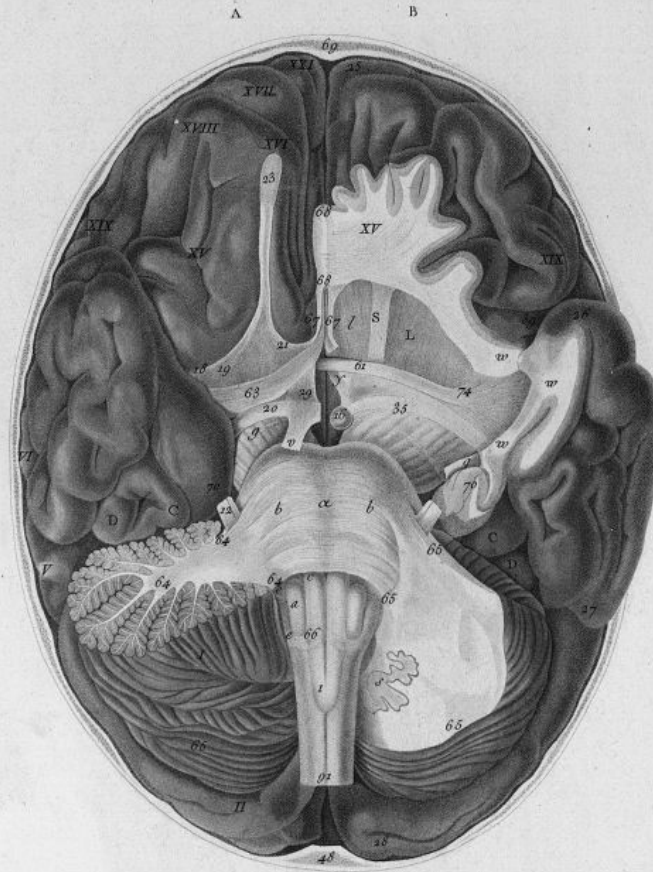
Perice del.

Bouquet Sculp.



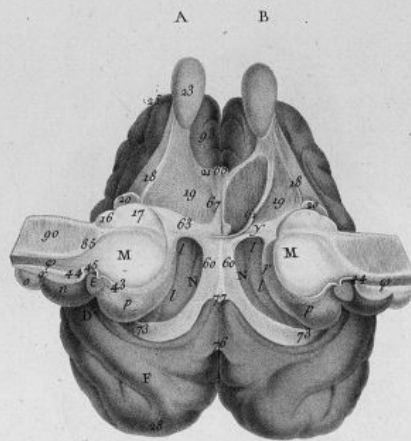
Prère del.

Bouquet sculp.



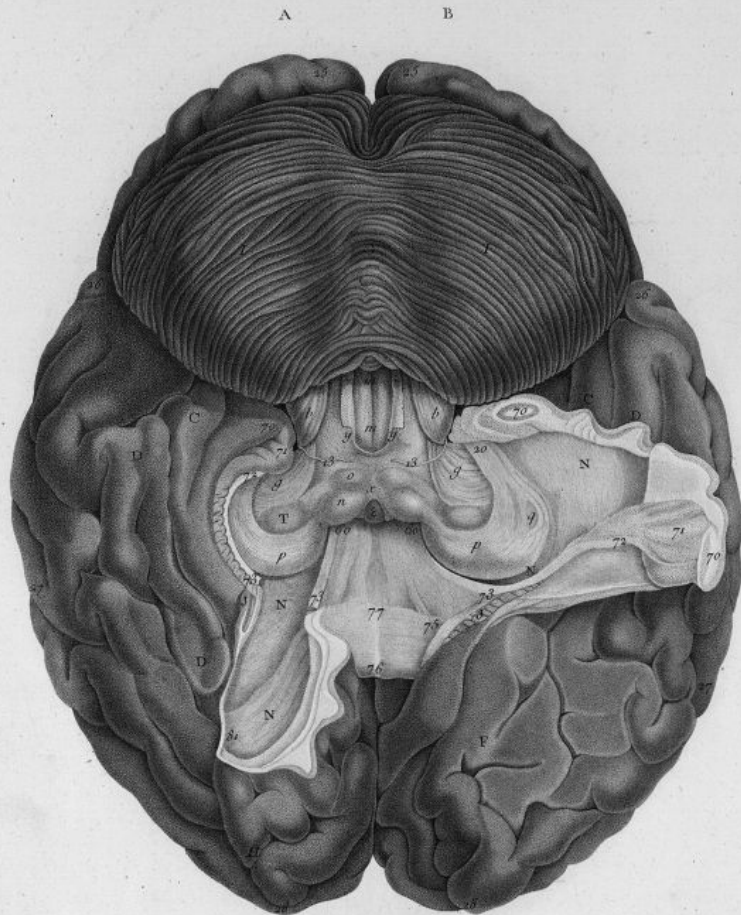
Prêtre del.

Benquet sculp.



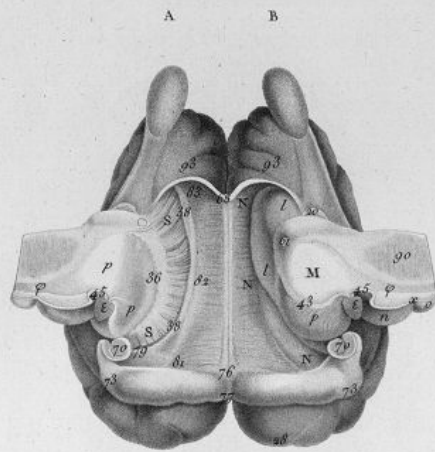
L'œuvre del.

Bouquet Sculpt.



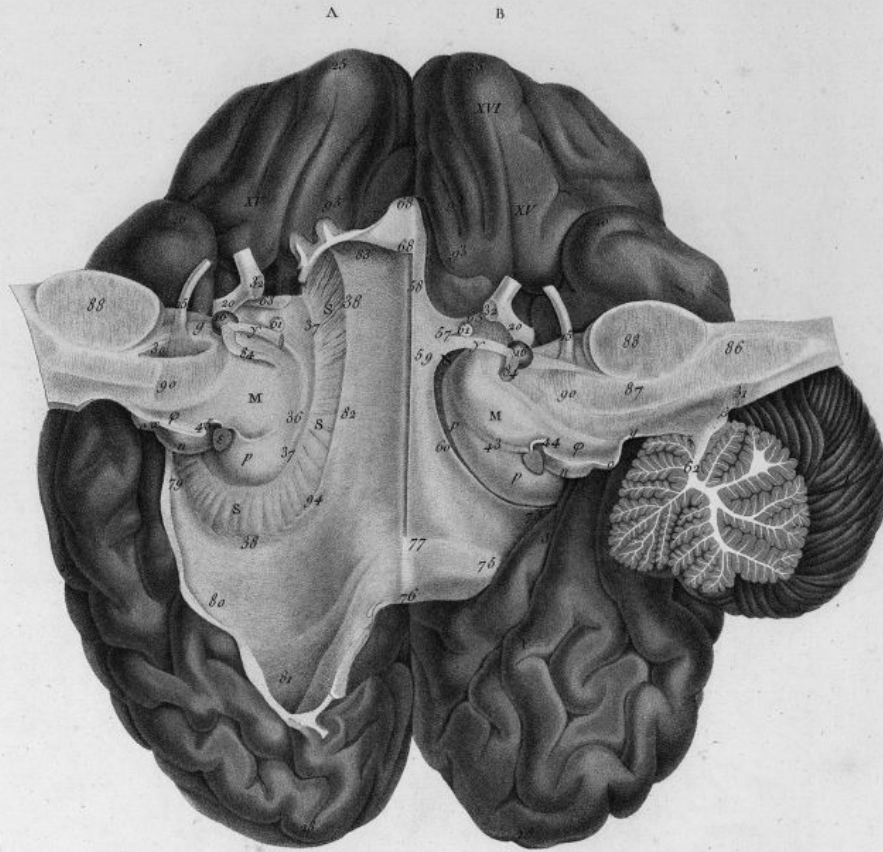
Peire del.

Bouquet sculp.



Prêtre del.

Bouquet sculp.



Prêtre del.

Bouquet sculp.

Fig. I.

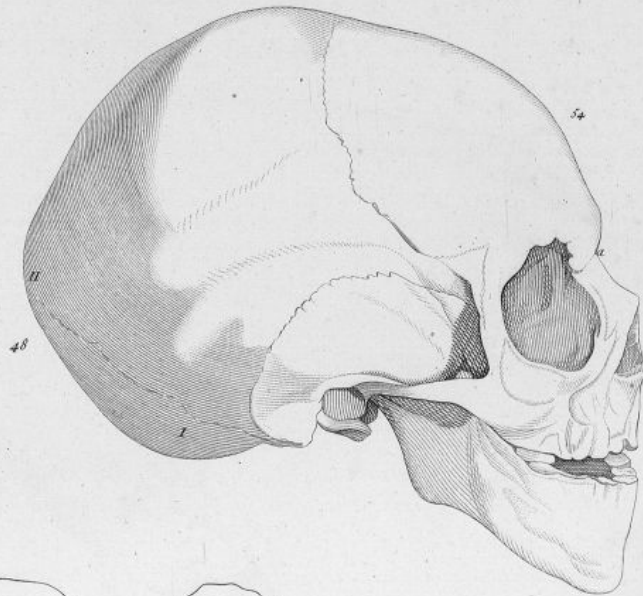


Fig. II.

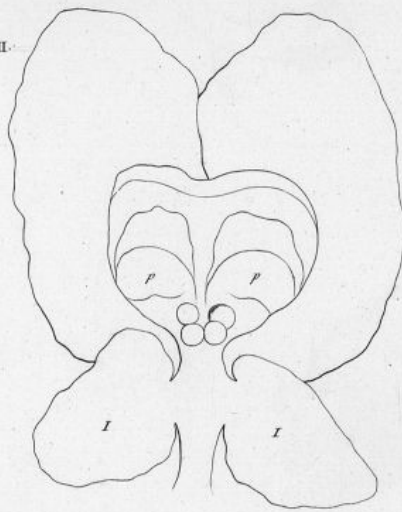
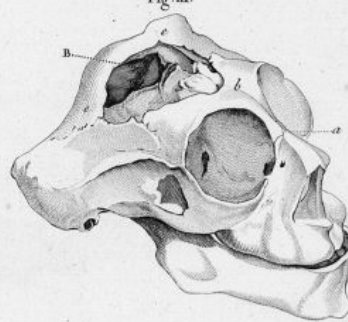


Fig. III.



Bouquet Sculp^r

Fig. I.

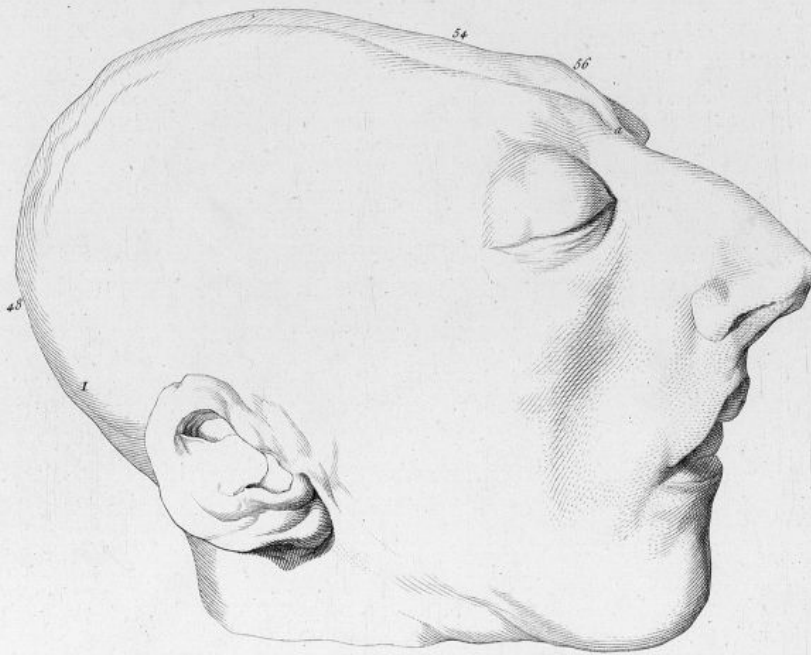
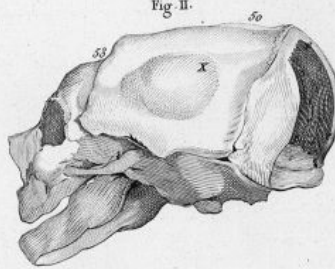


Fig. II.



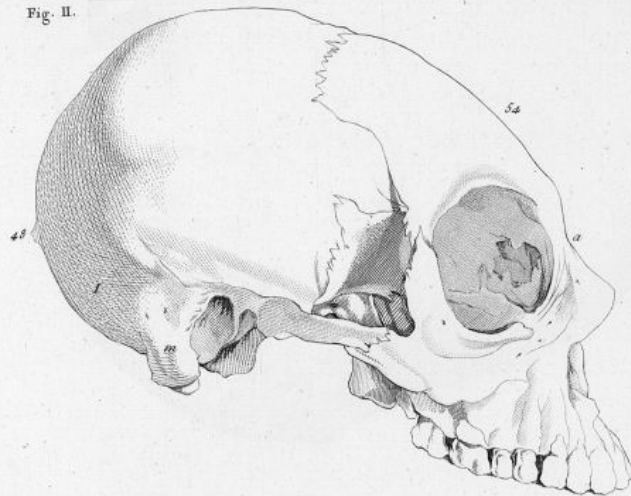
Le Pautre del.

Boquet sculp.

Fig. I.

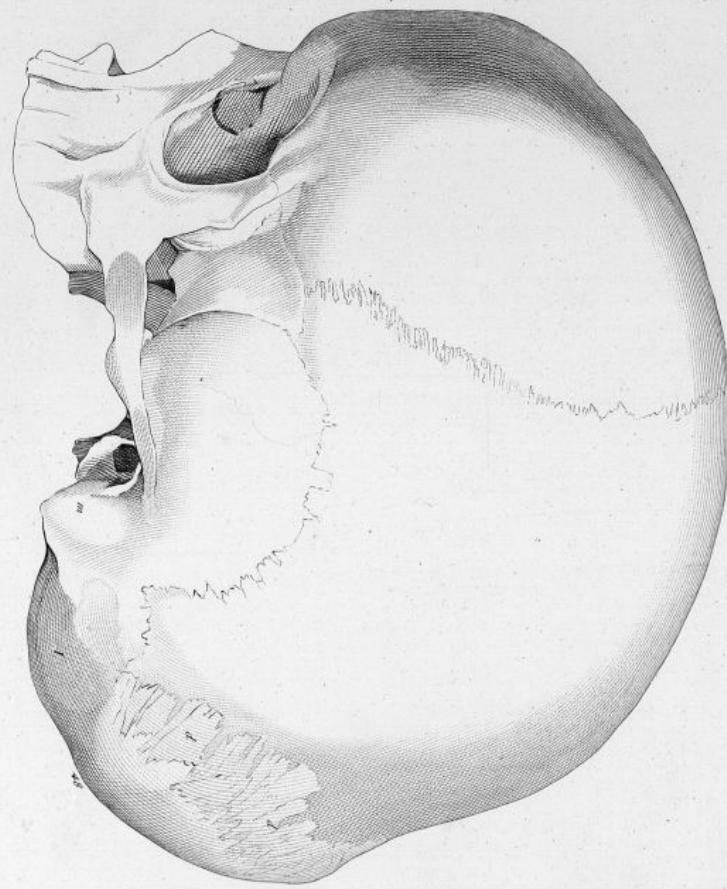


Fig. II.



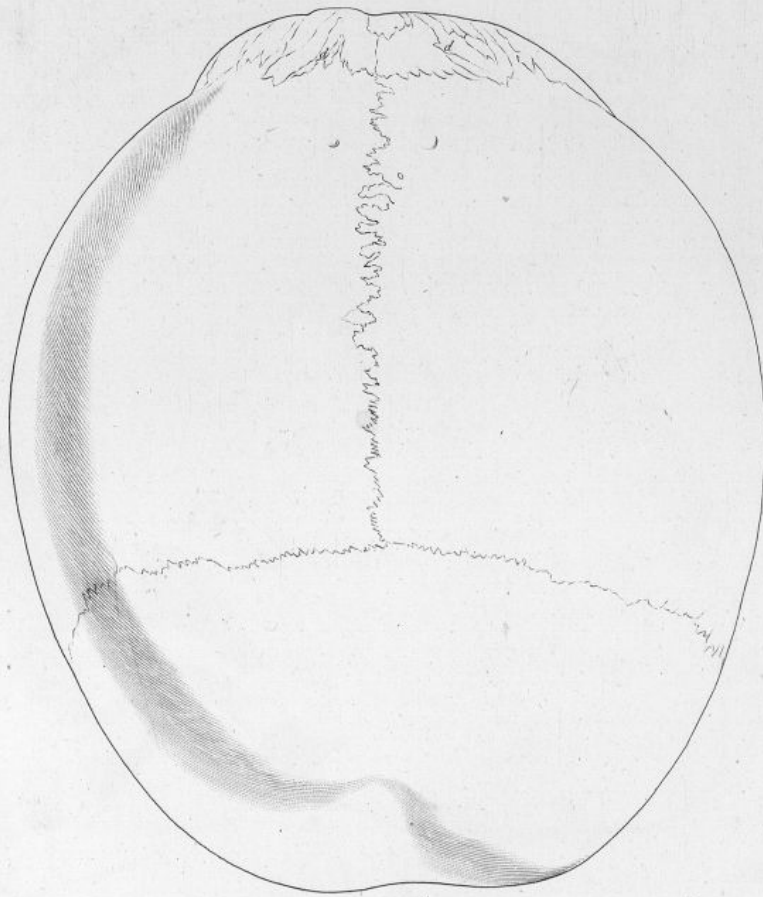
Bouquet, sculpt.

Pl. XXI.



Prêtre del.

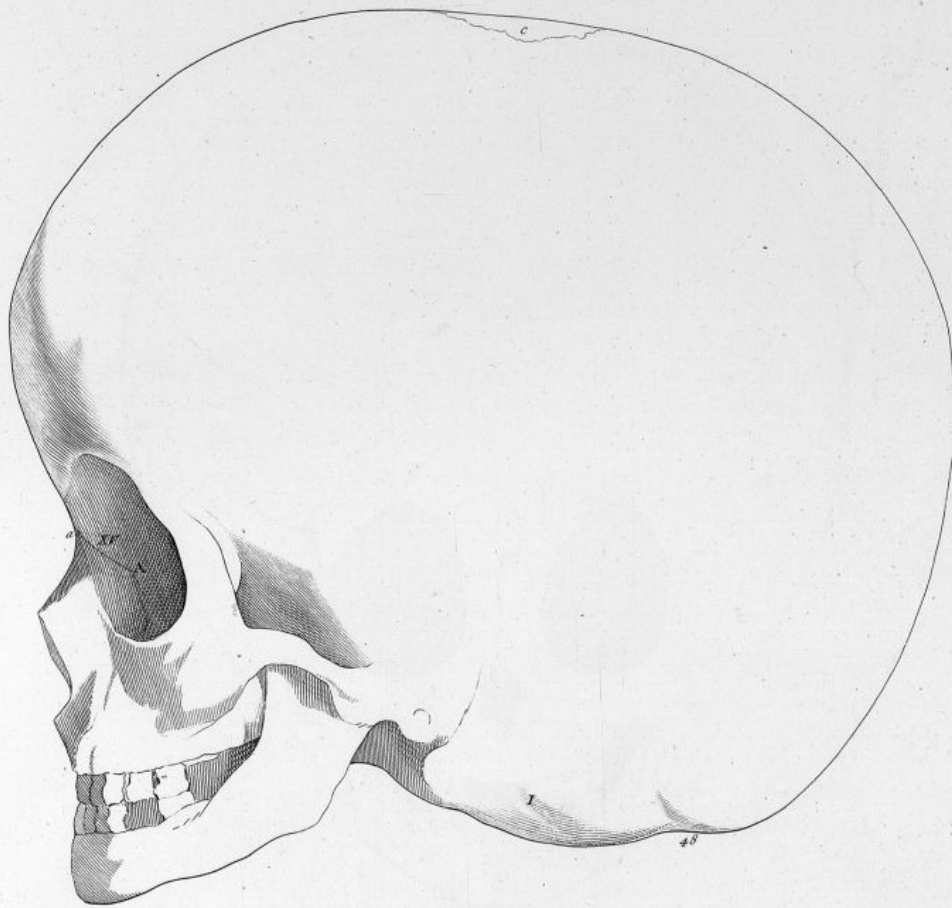
Bouquet sculp.



Prêtre del.

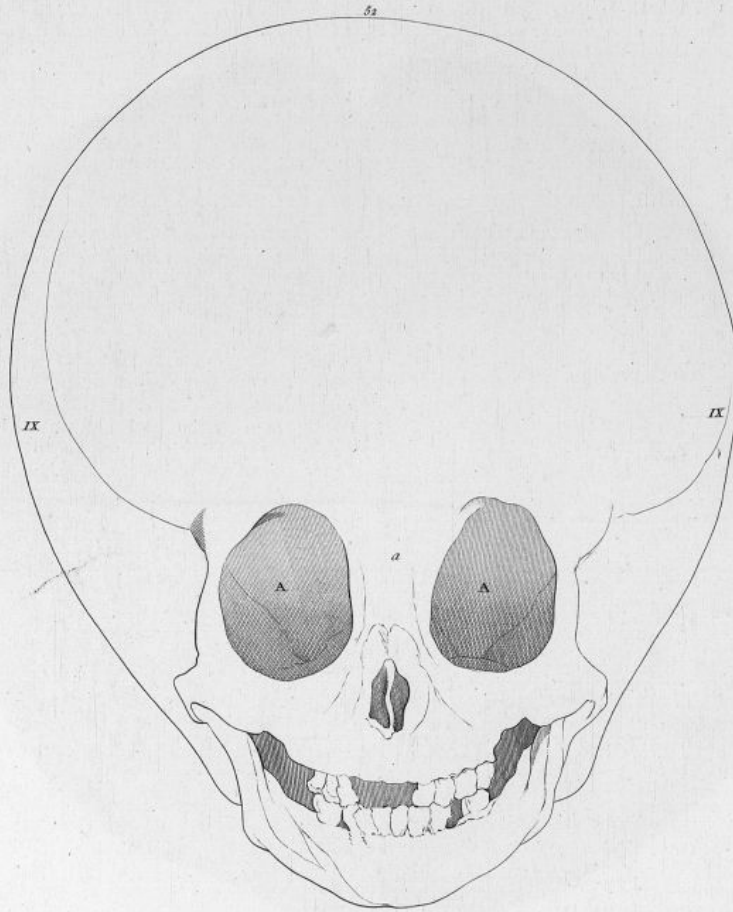
Bouquet sculp.

Pl. XXIII.



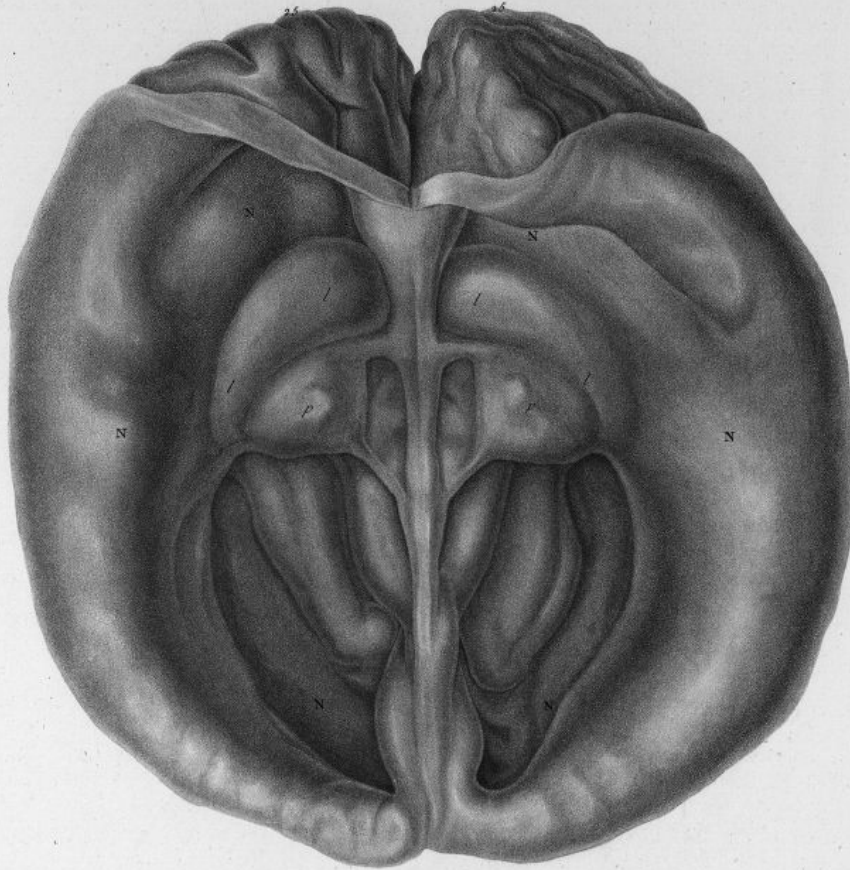
Prêtre del.

Bouquet sculp.



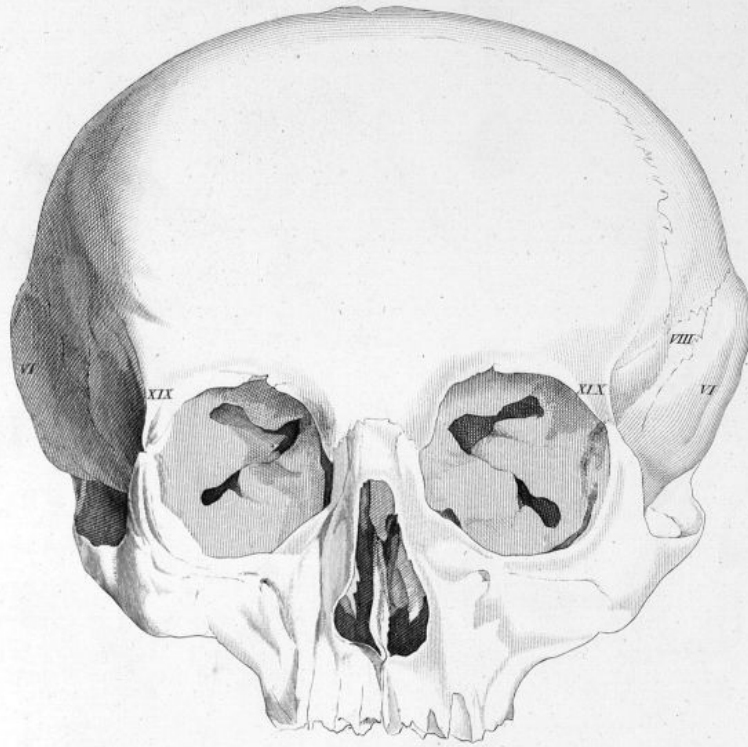
Le Ponce del.

Bouquet sculp.



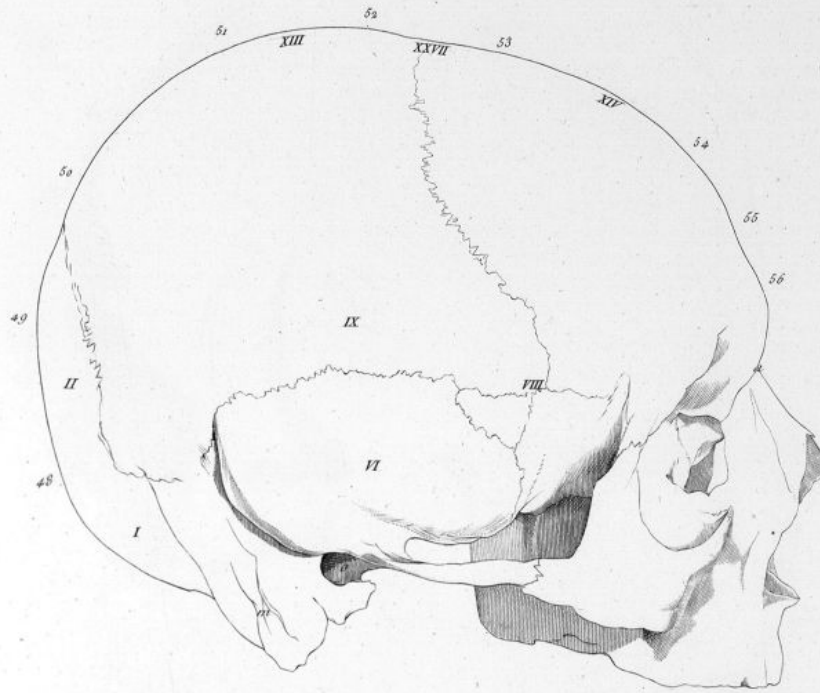
Prêtre del.

Bouquet sculp.

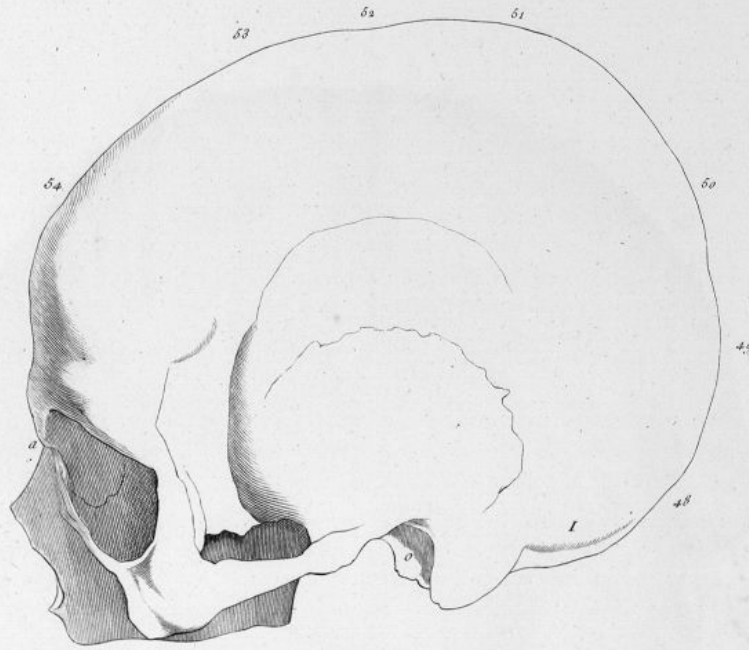


Prêtre del.

Bouquet sculp.

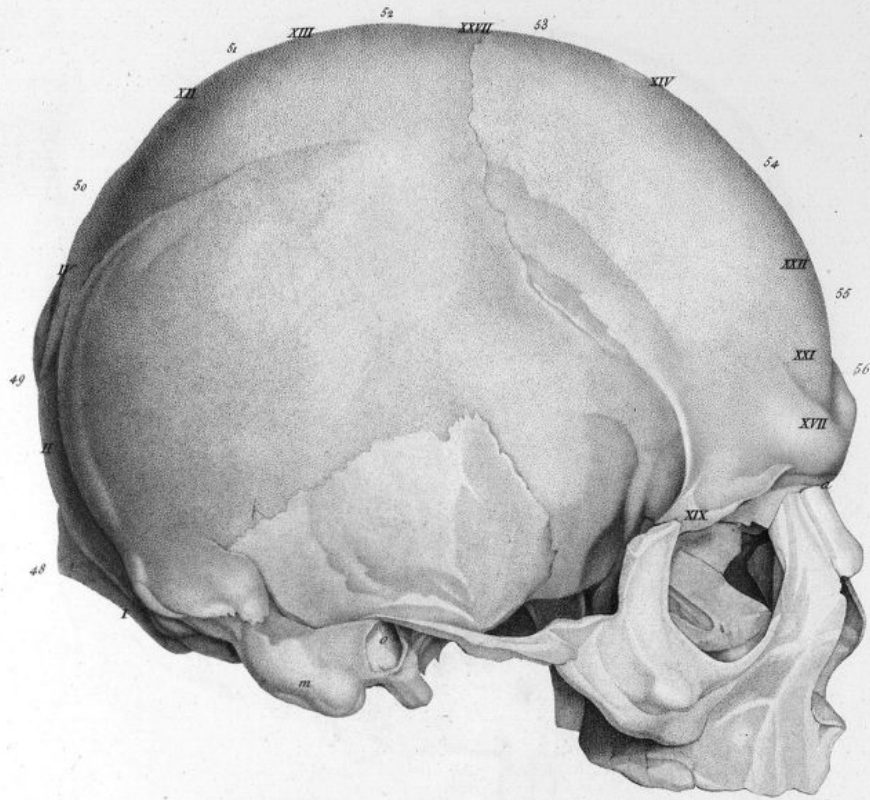


Bouquet sculpt.

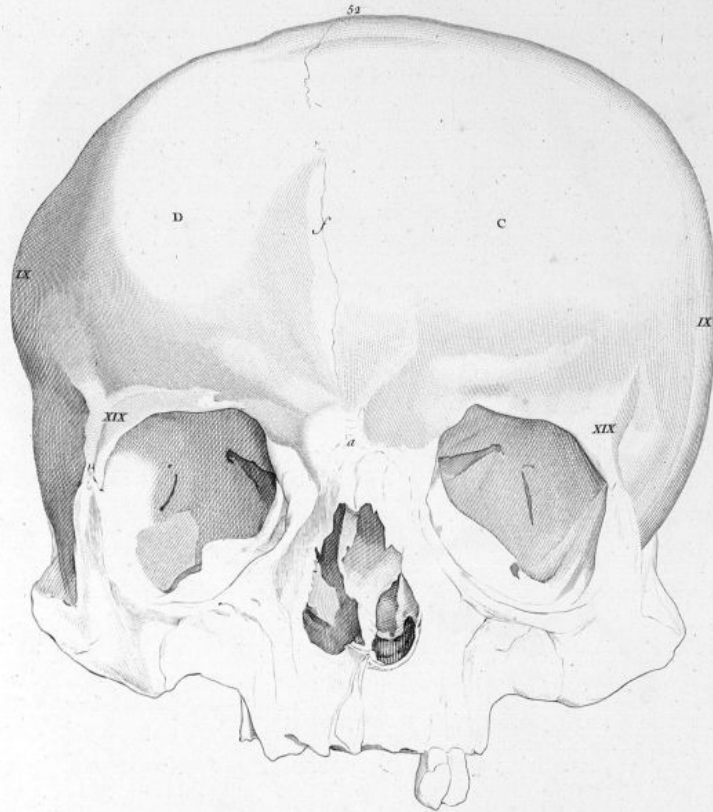


Benquet Sculp.

Pl. XXX.

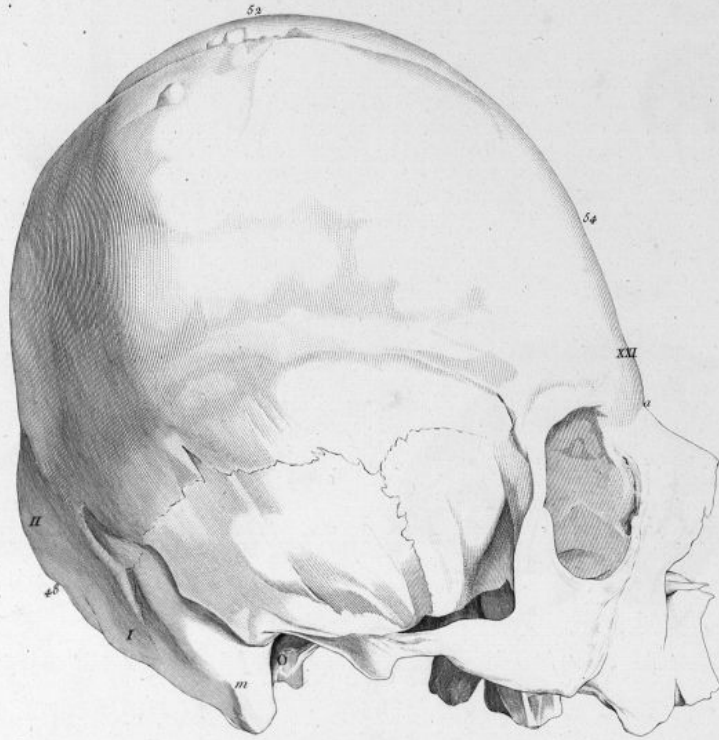


Bouquet sculp^t



LePrieux del.

Boissier Sculp.



Le Peintre del.

Bouquet Sculp.

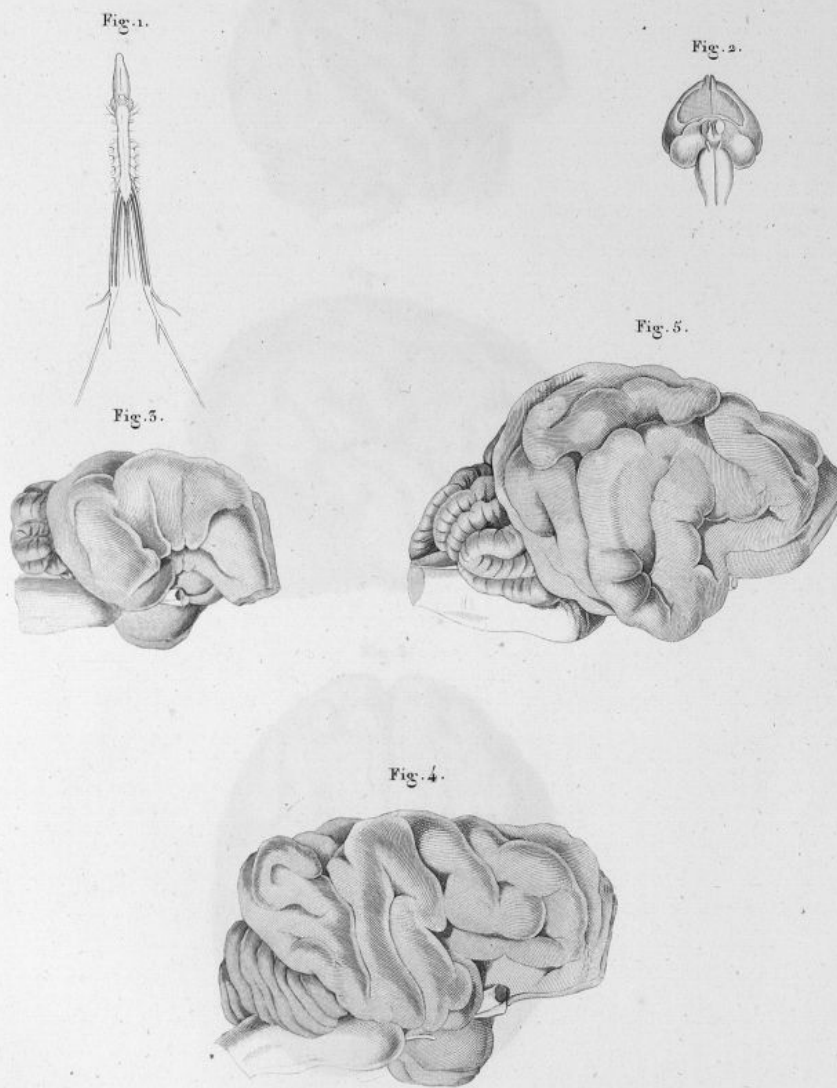


Fig. 1.

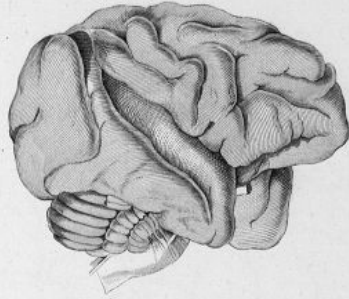


Fig. 2.

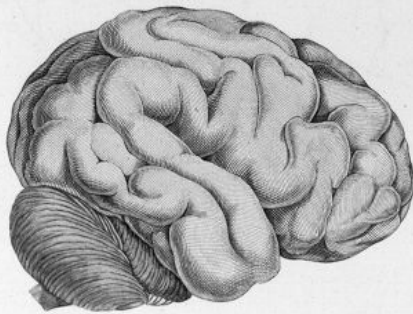
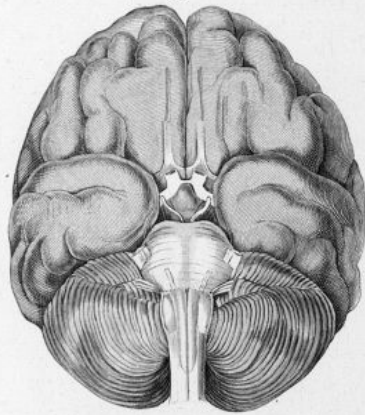
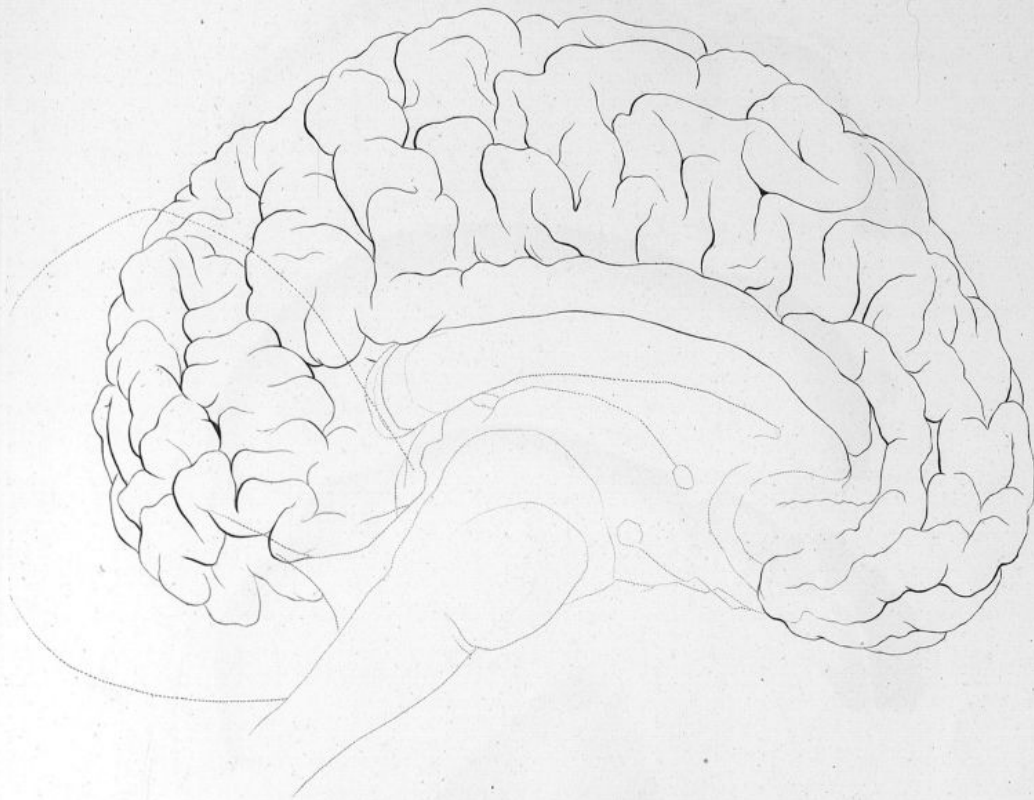
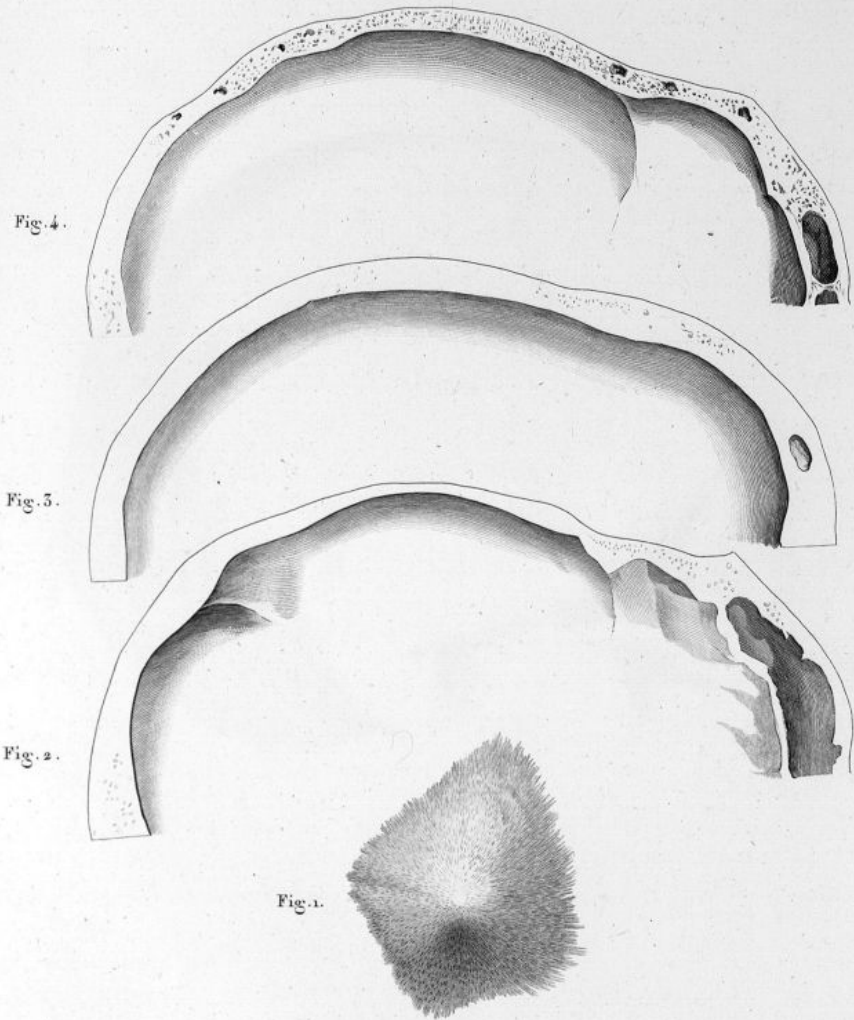


Fig. 5.



PL. XXXV.











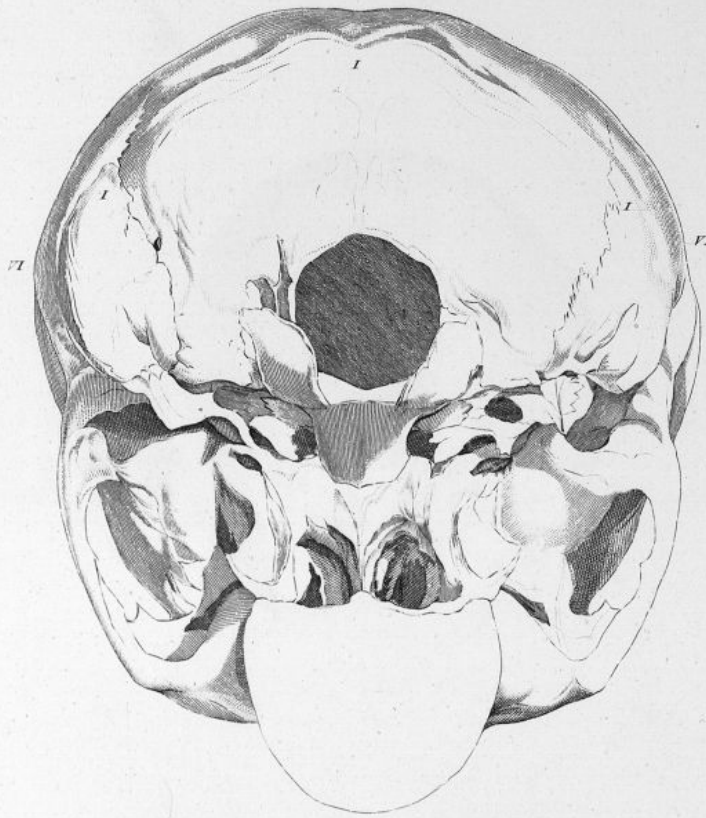


Fig. 3.

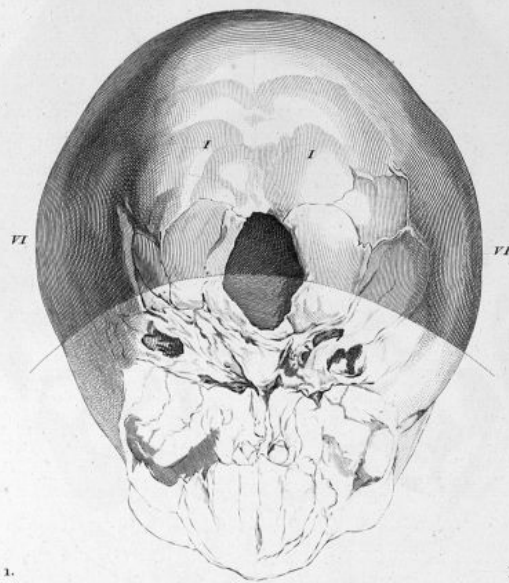
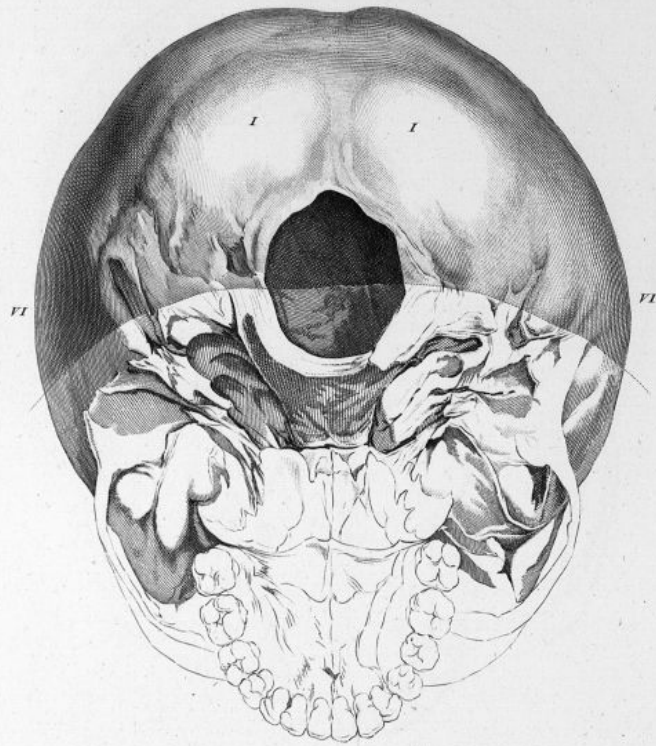


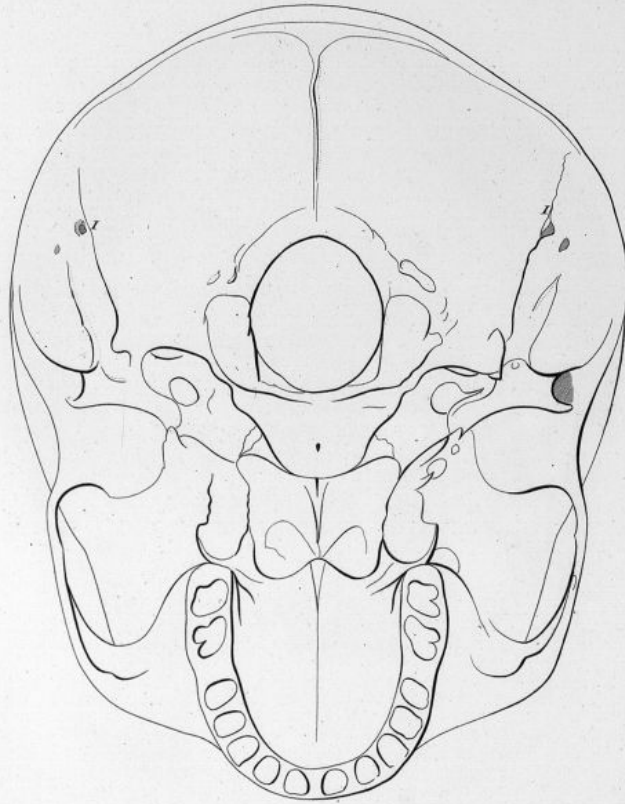
Fig. 1.

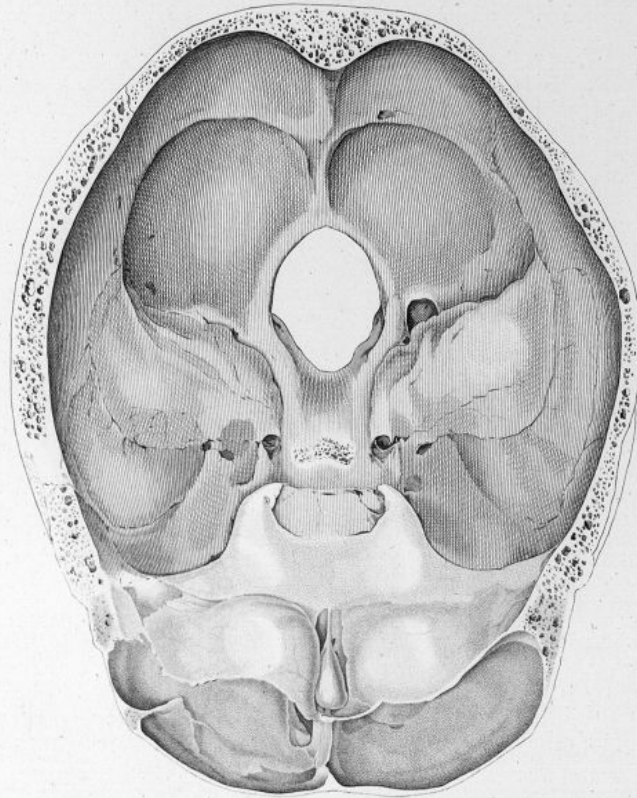


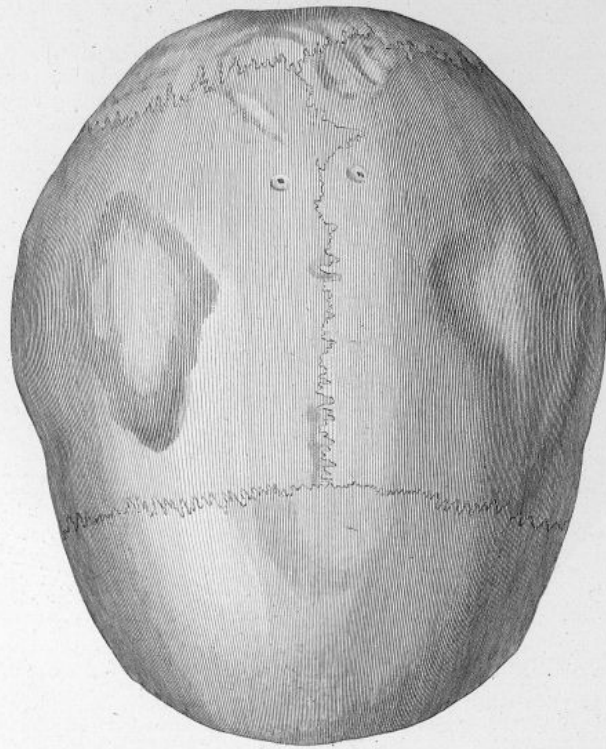
Fig. 2.



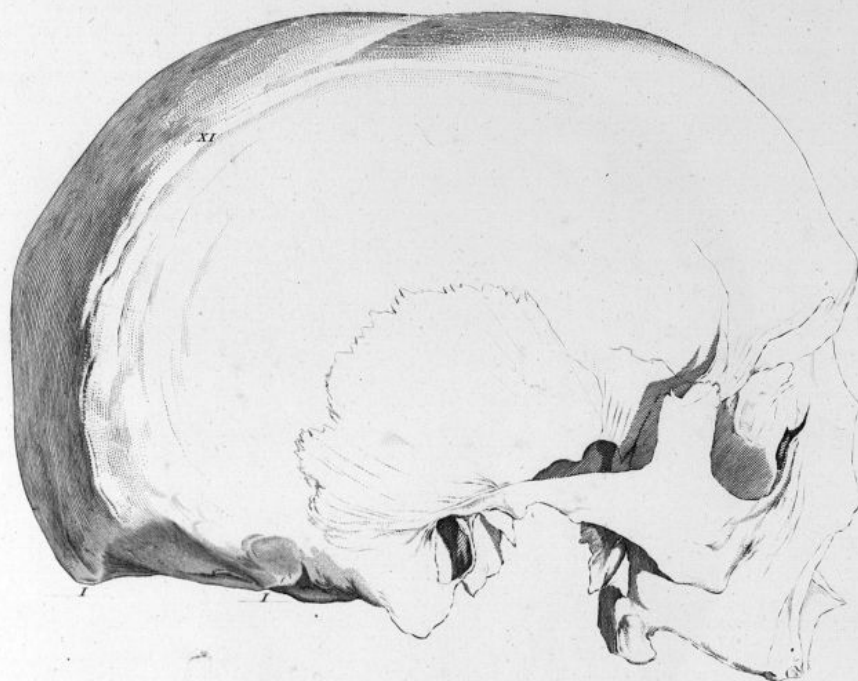












PL. XLIX.



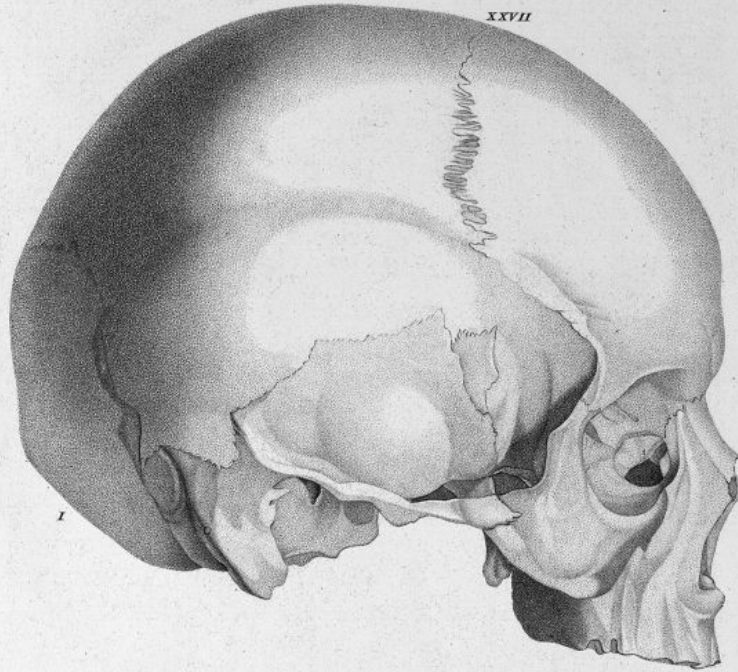


Fig. 1.

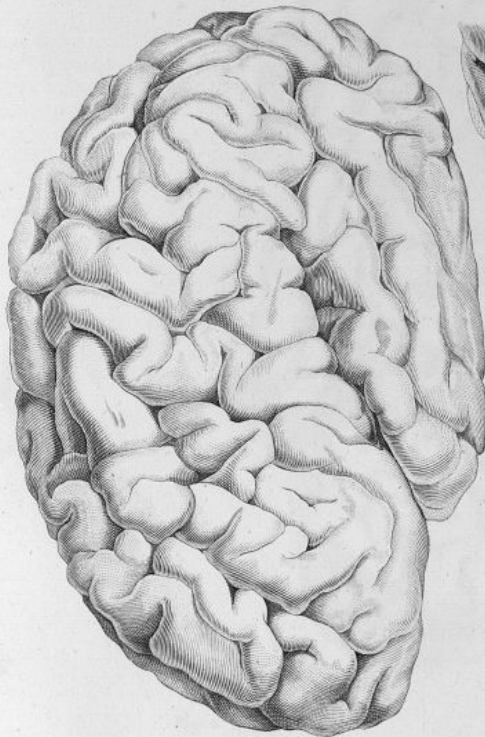


Fig. 4.

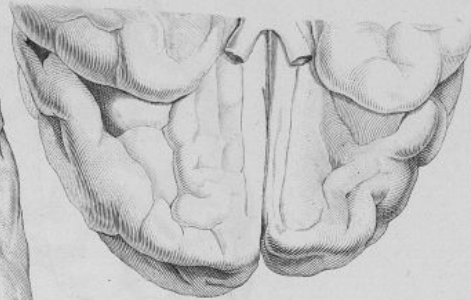


Fig. 3.

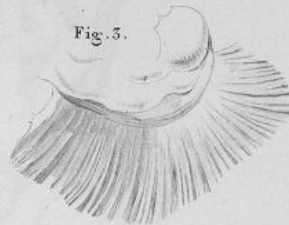


Fig. 2.

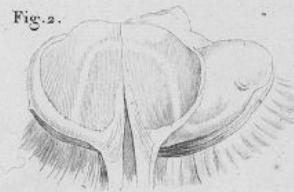


Fig. 1.

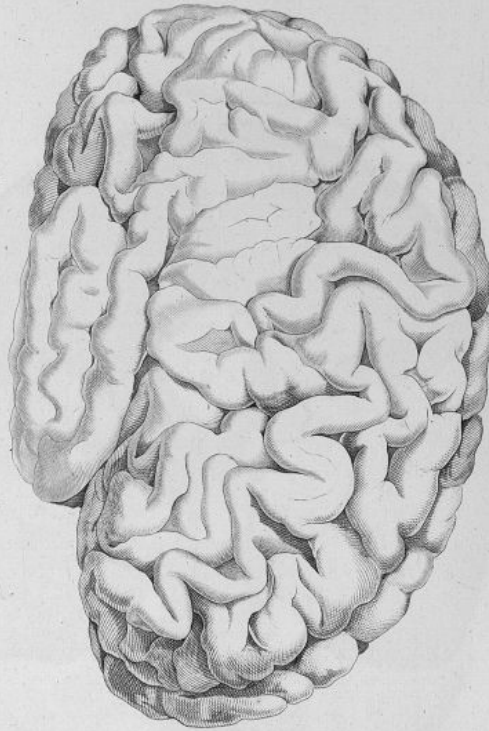
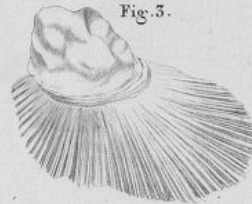


Fig. 2.



Fig. 3.



PL. LIII.

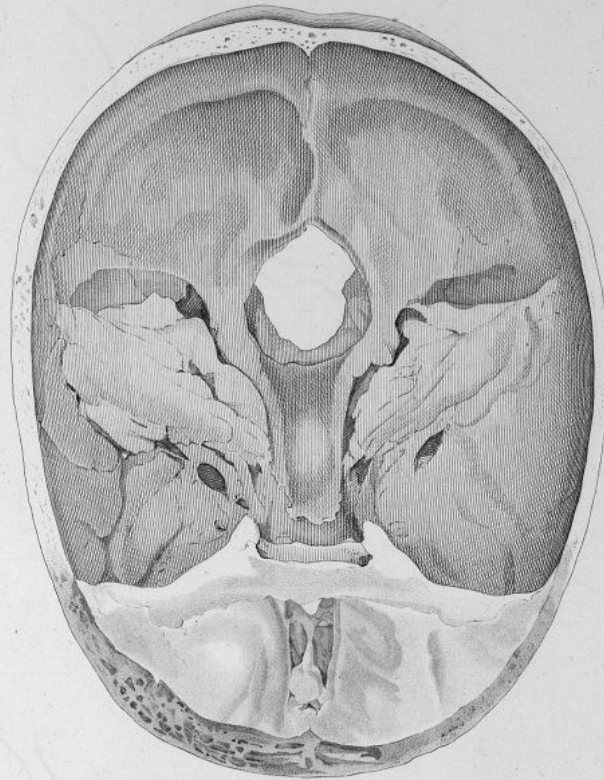


Fig. 1.

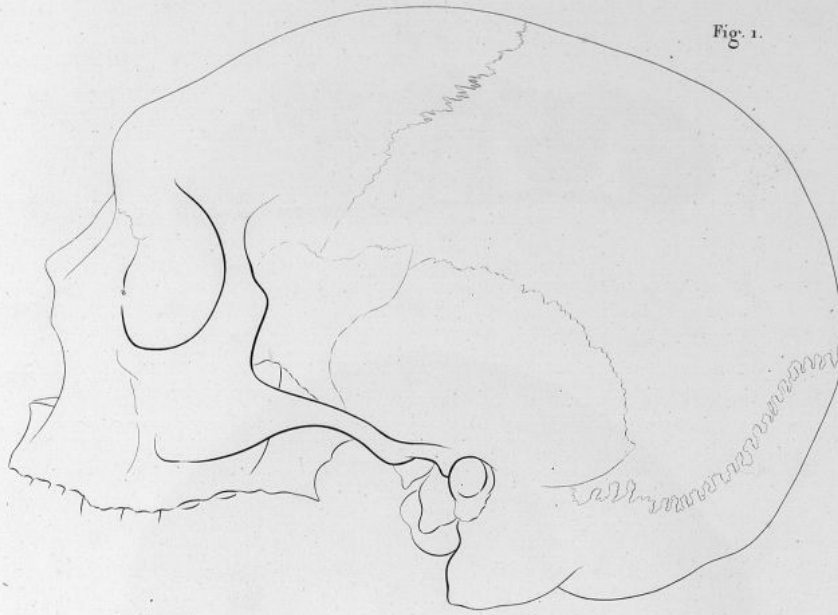


Fig. 2.



Fig. 1.

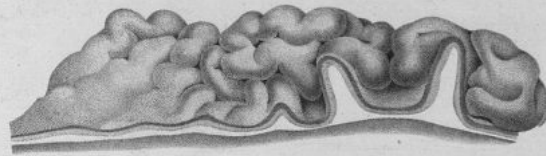


Fig. 2.

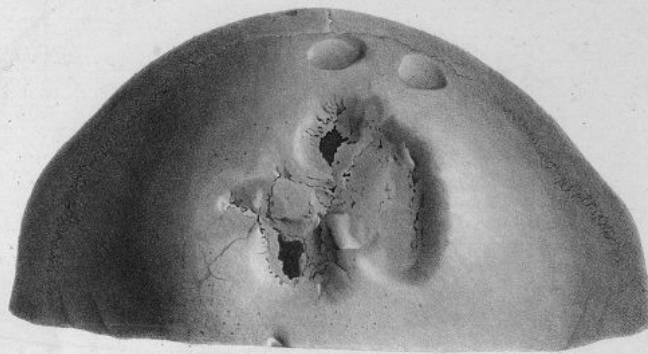


Fig. 3.



Fig. 4.



Fig. 5.



Pl. LVI.



Fig. 2.



Fig. 1.

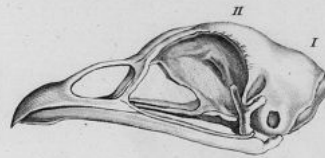


Fig. 3.

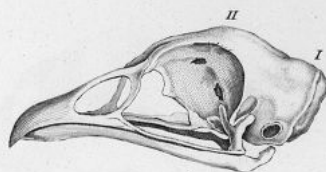


Fig. 4.

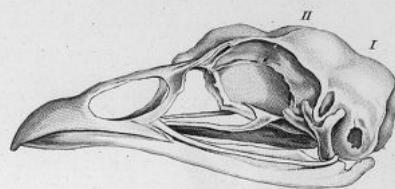


Fig. 8.



Fig. 9.



Fig. 5.

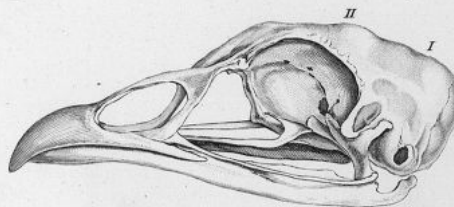


Fig. 7.

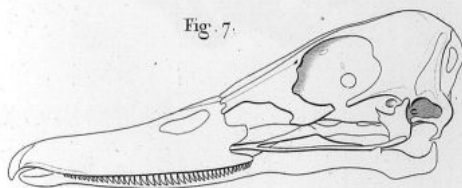


Fig. 6.

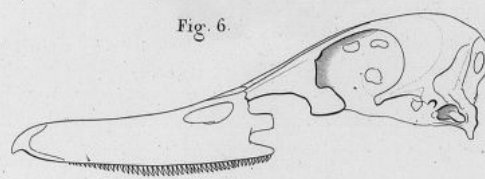


Fig. 1.



Fig. 2.

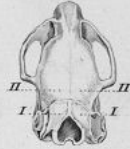


Fig. 3.

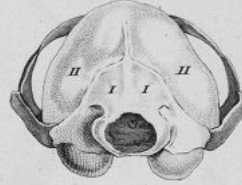


Fig. 4.

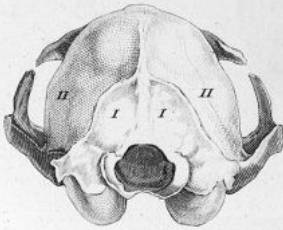


Fig. 5.

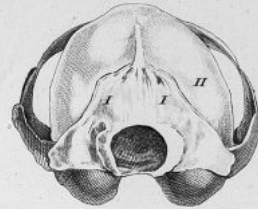


Fig. 6.

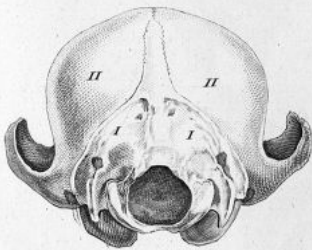


Fig. 7.

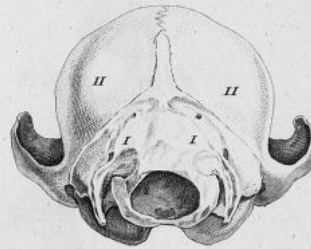


Fig. 1.

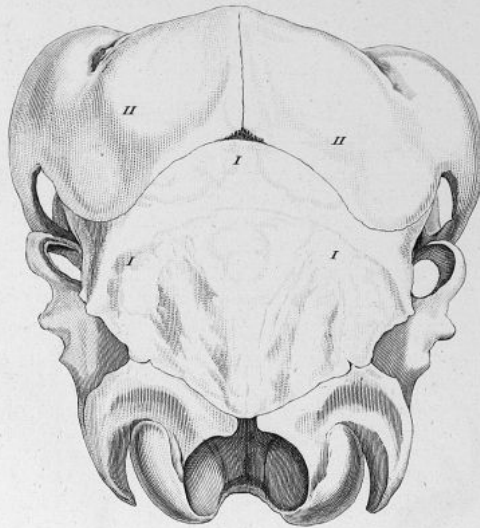
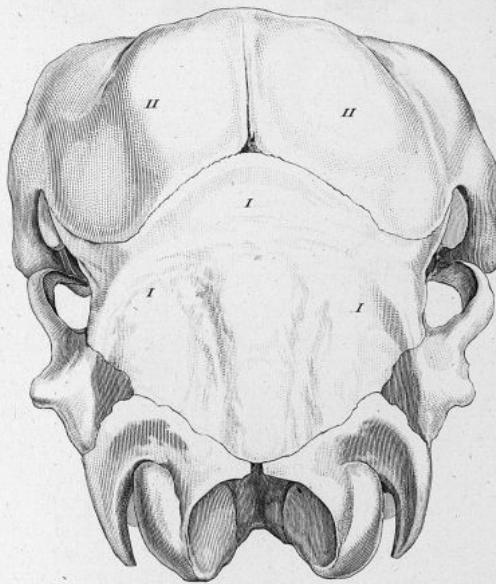


Fig. 2.



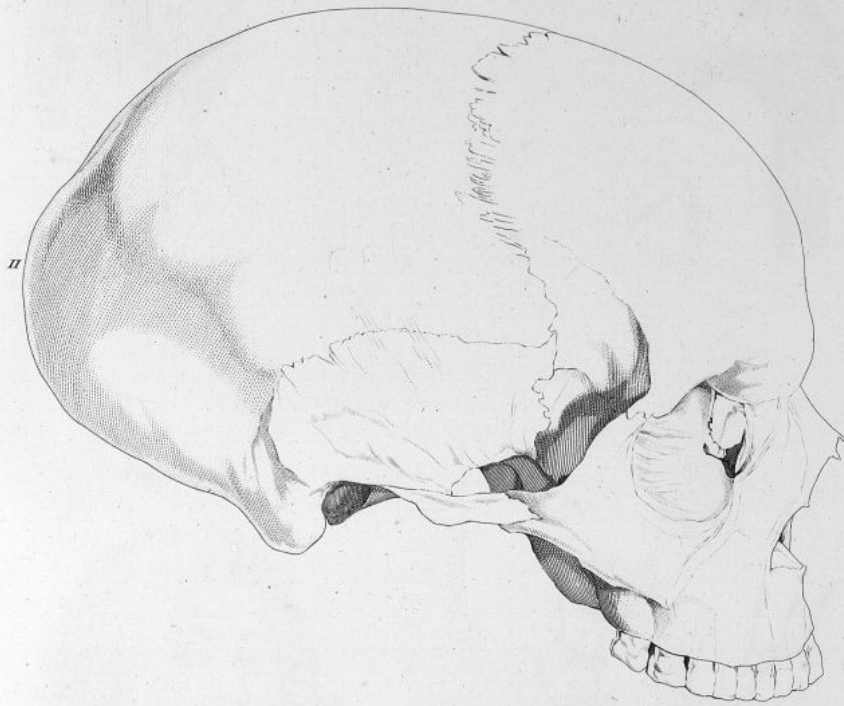


Fig. 1.



Fig. 5.

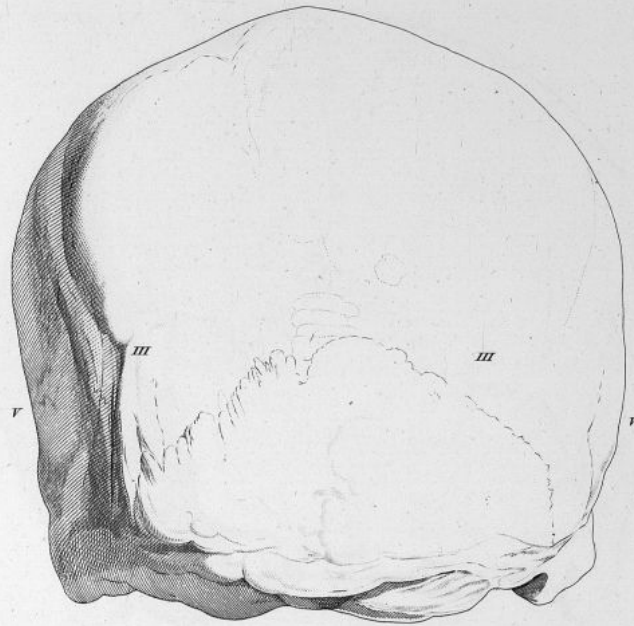


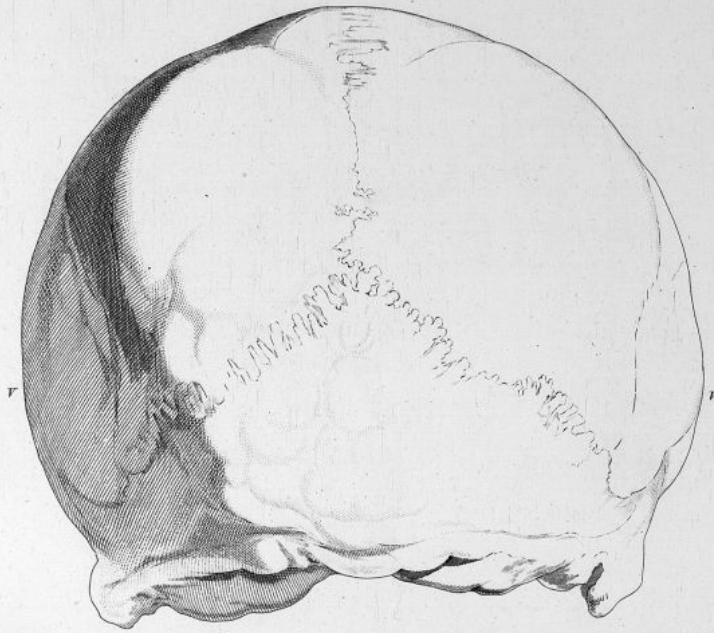
Fig. 2.



Fig. 4.







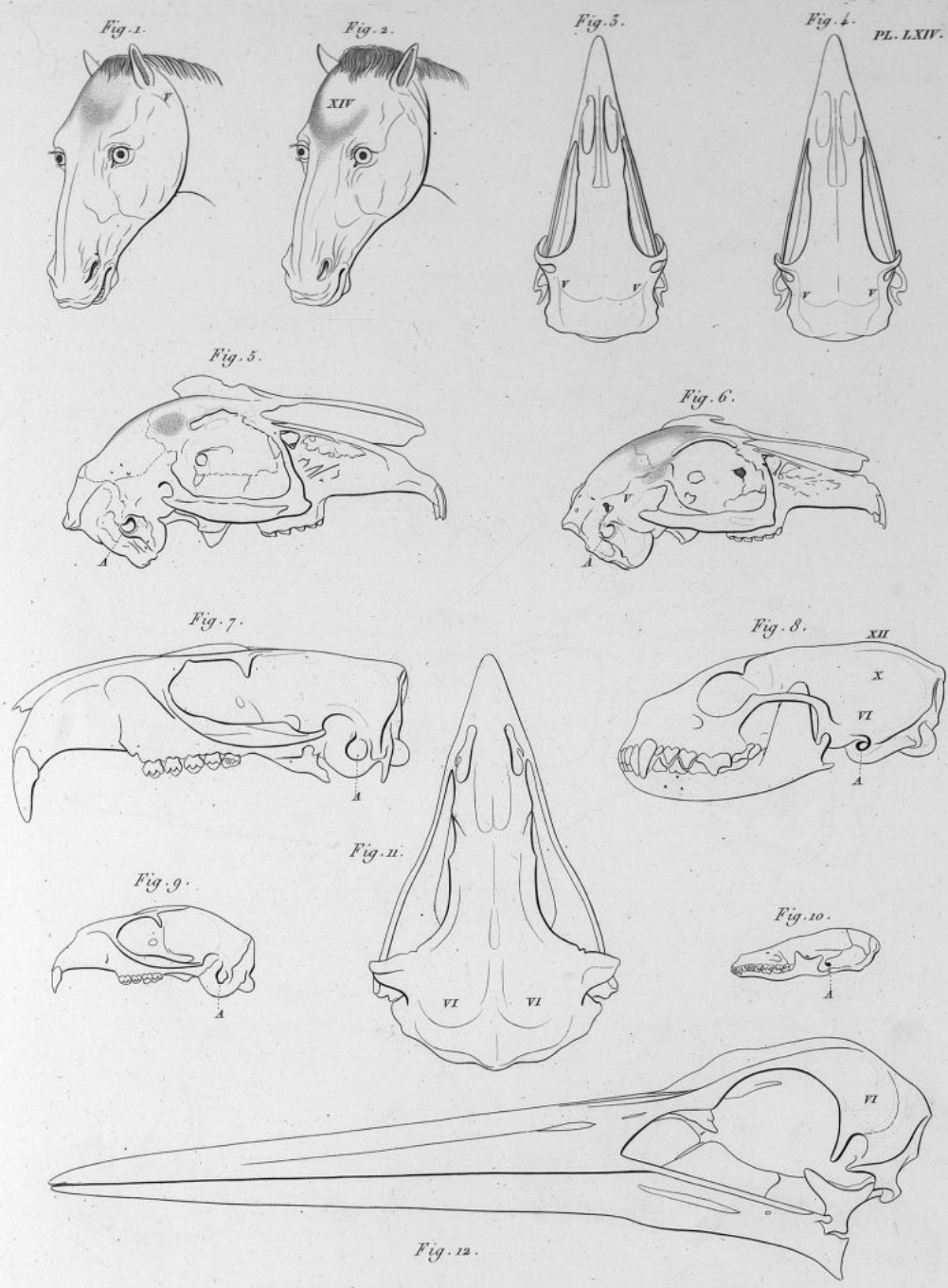


Fig. 3.

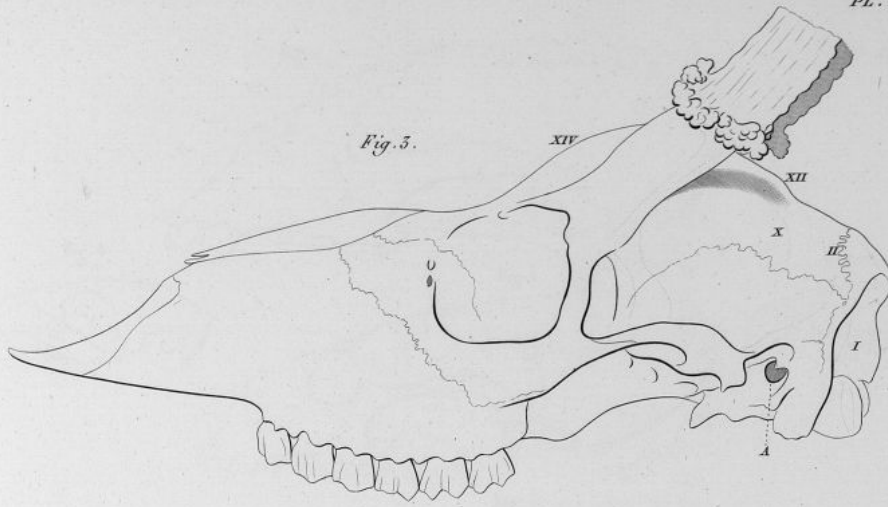


Fig. 4.

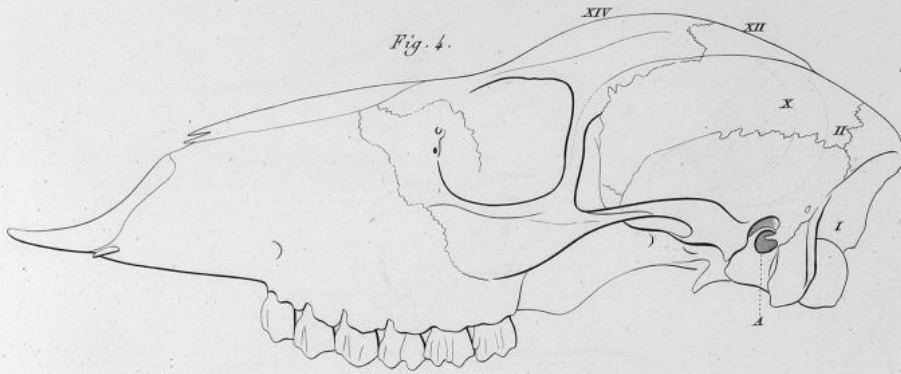


Fig. 1.

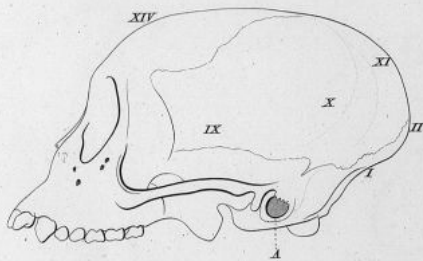
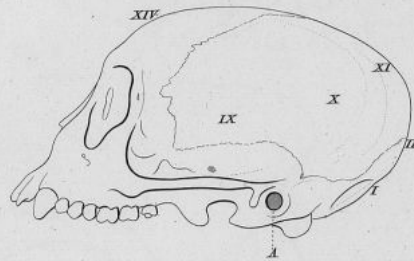


Fig. 2.



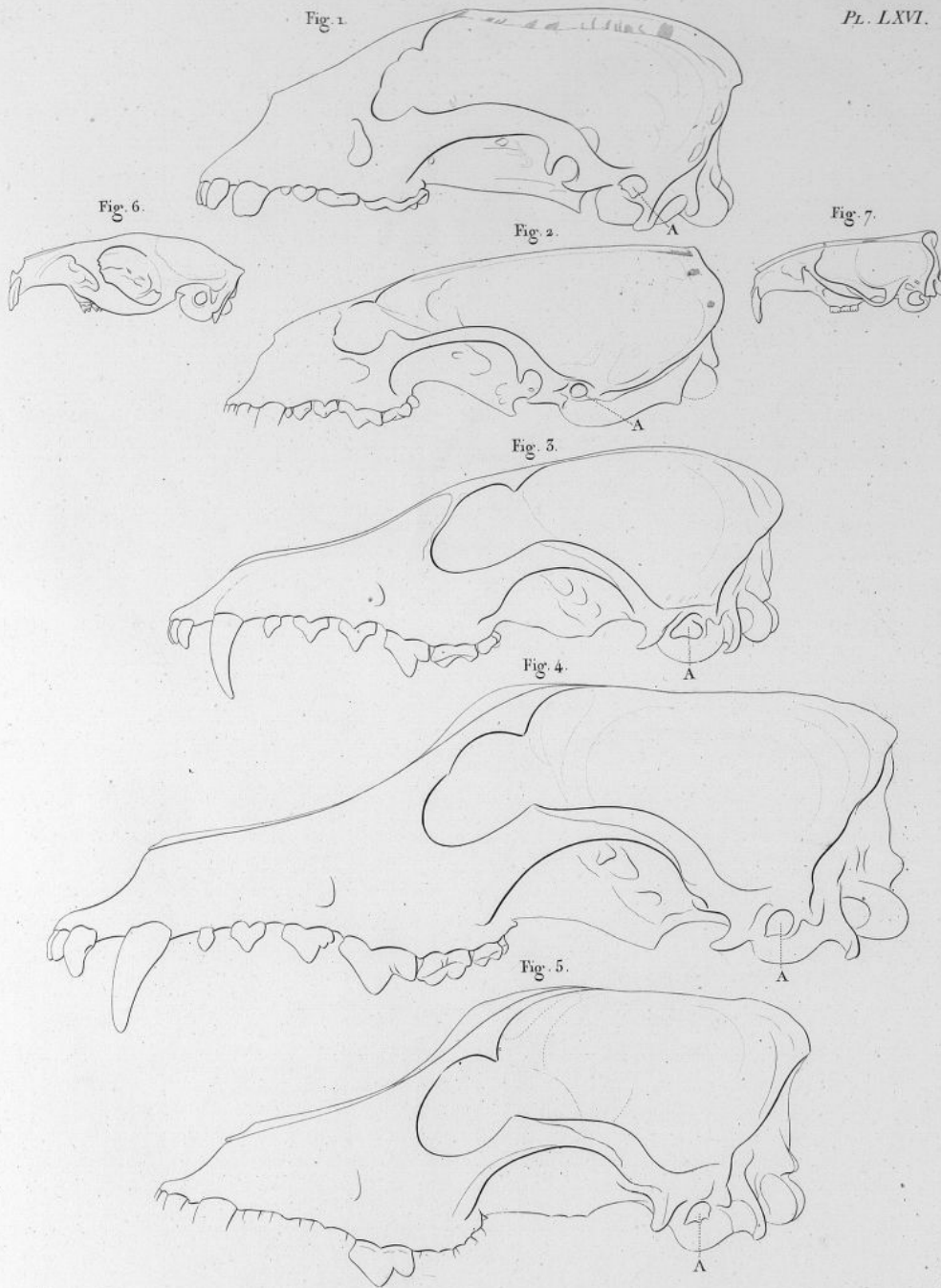


Fig. 1.

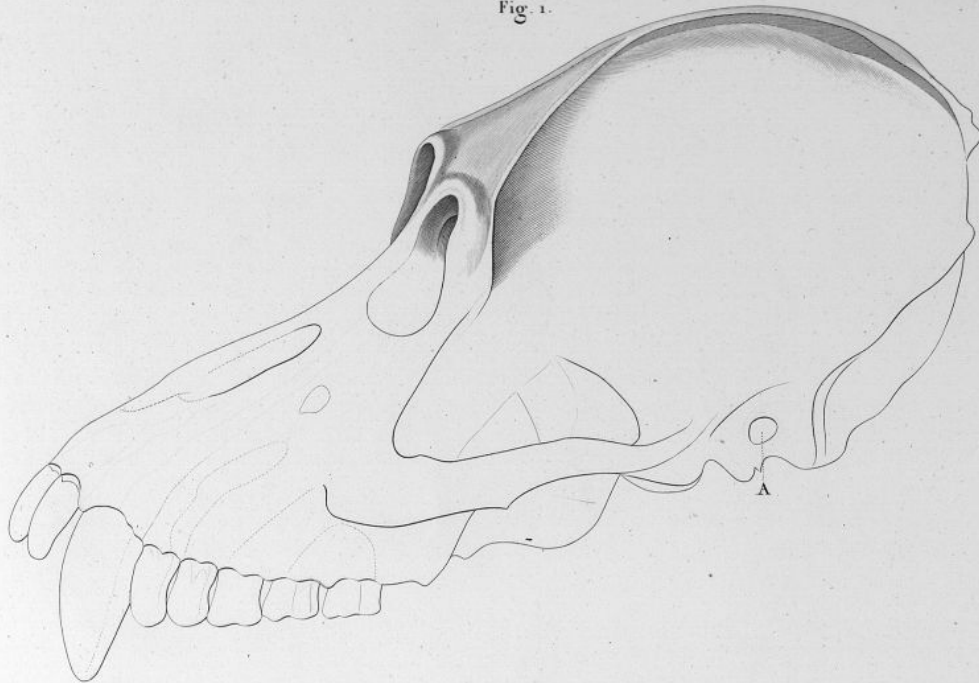
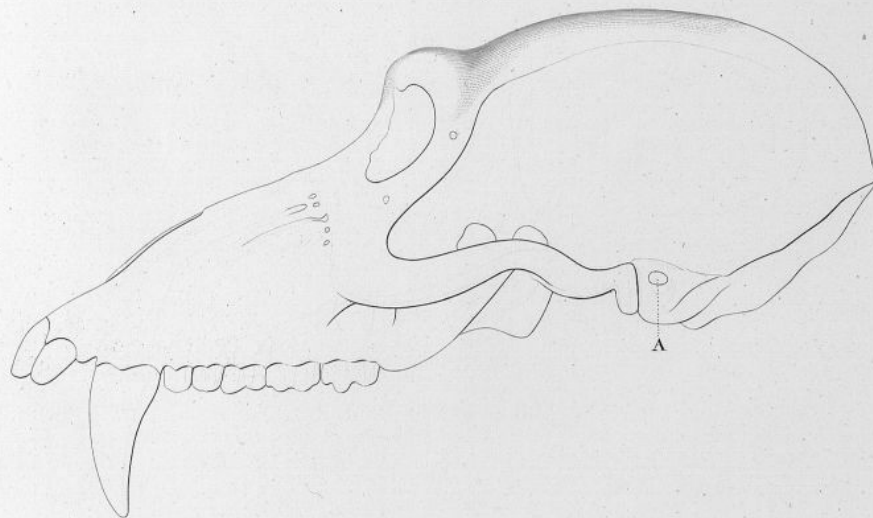


Fig. 2.



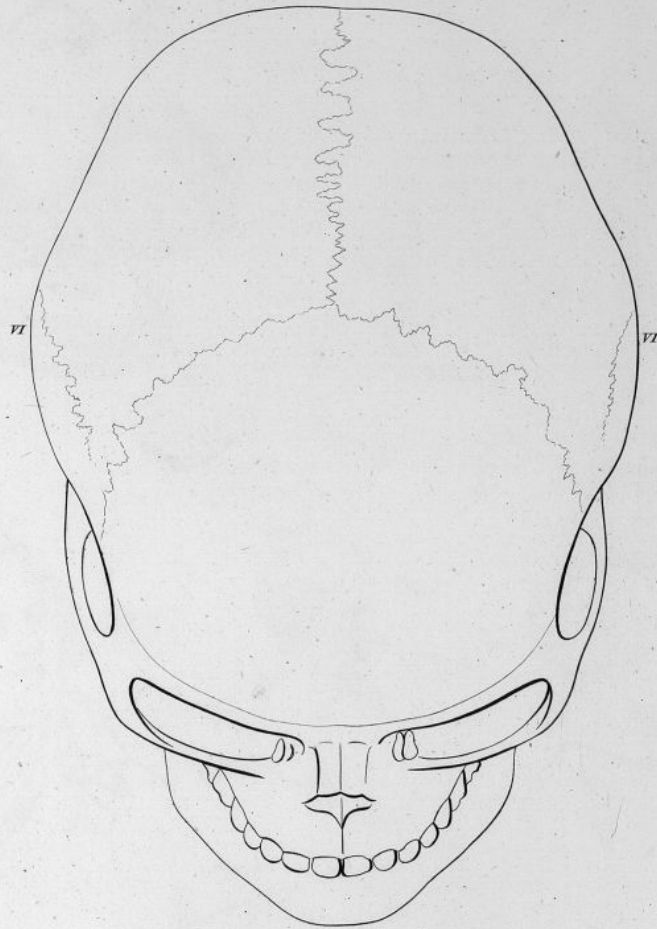




Fig. 2.



Fig. 1.

Fig. 3.

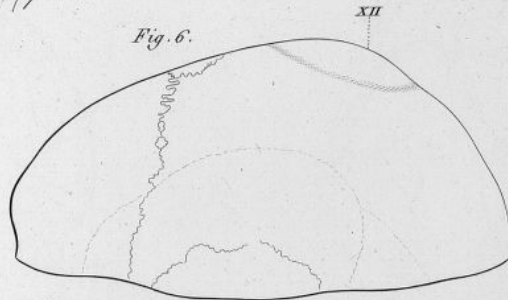


Fig. 5.

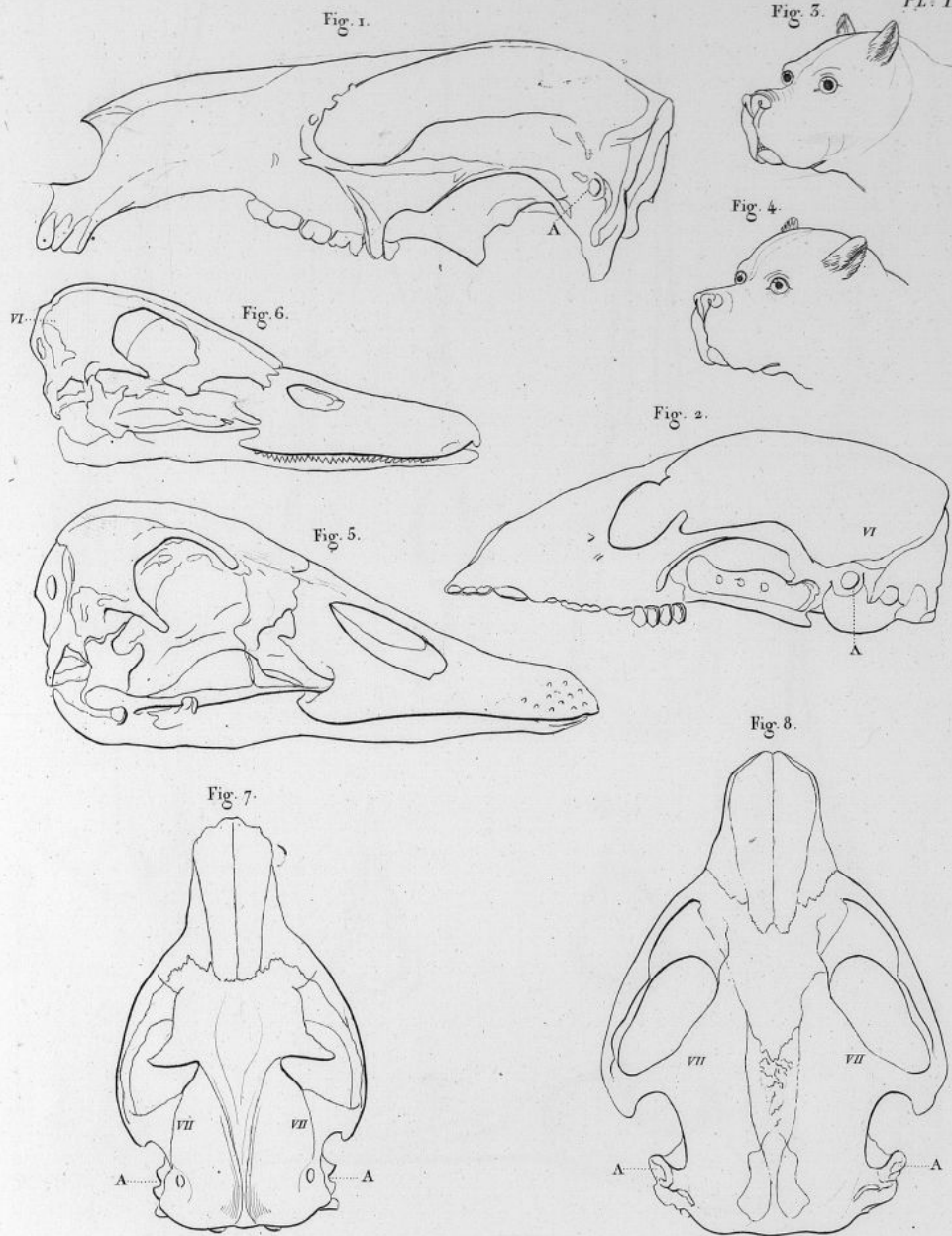


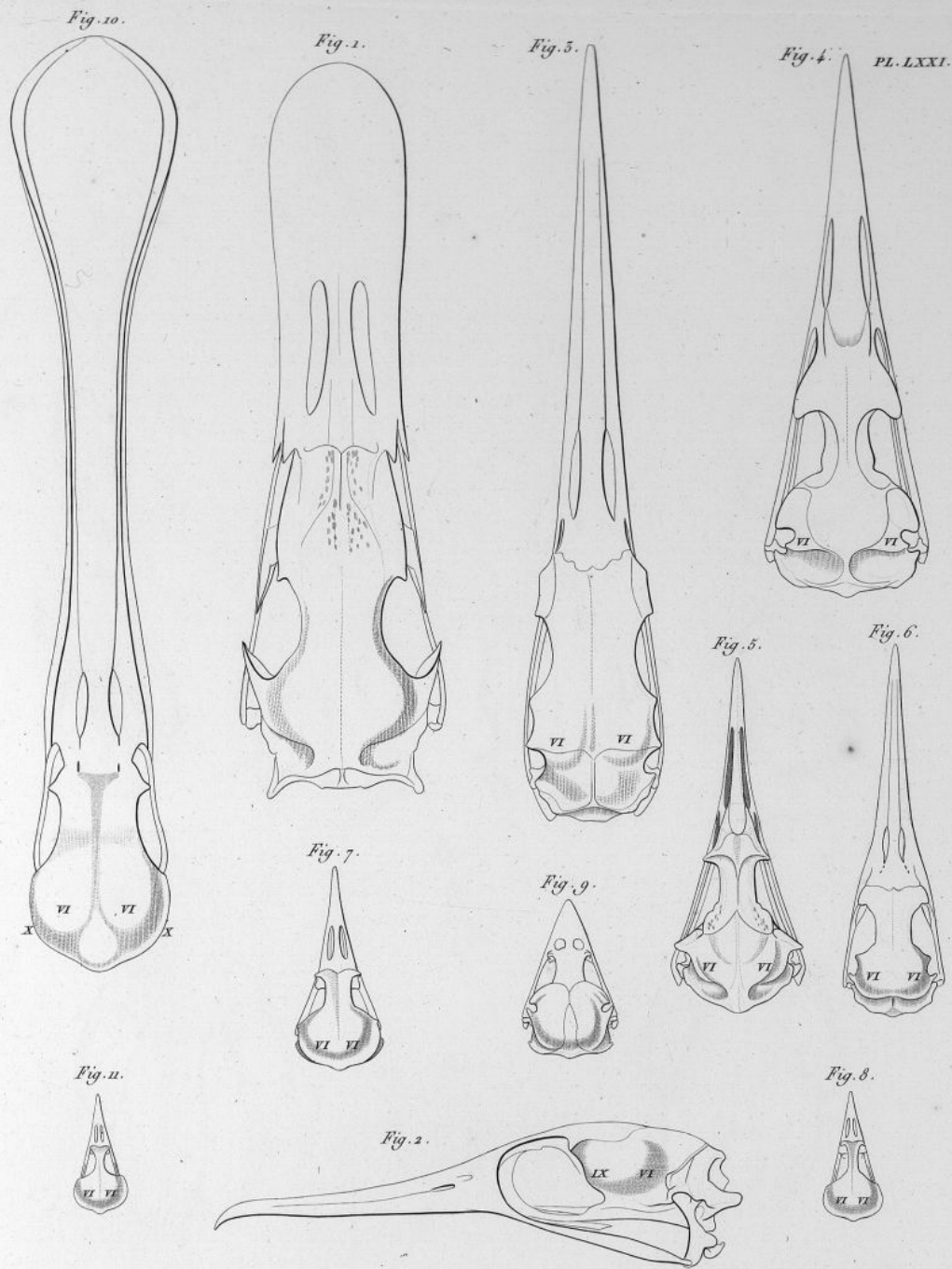
Fig. 4.

Fig. 6.



$\frac{2}{3}$ de Grandeur.





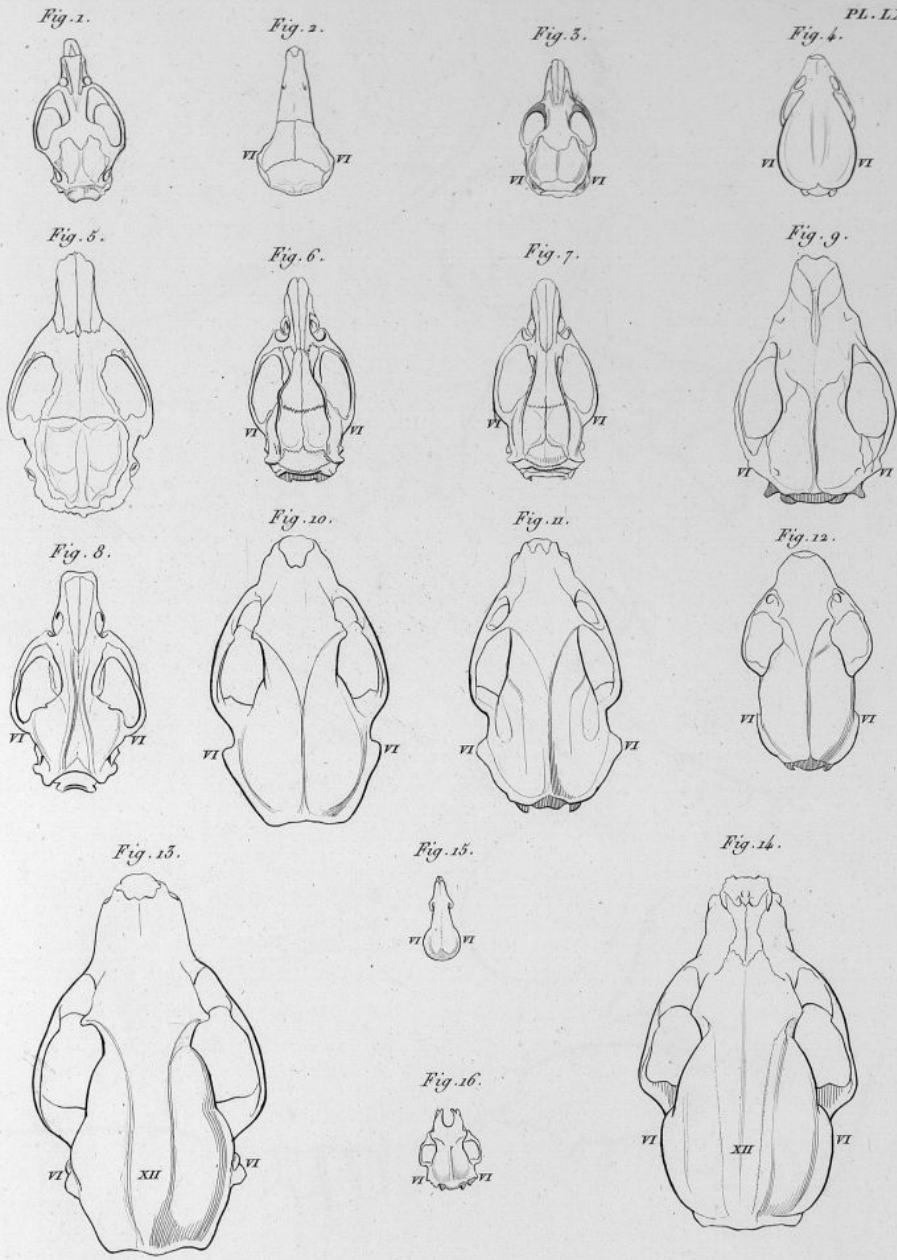


Fig. 1.

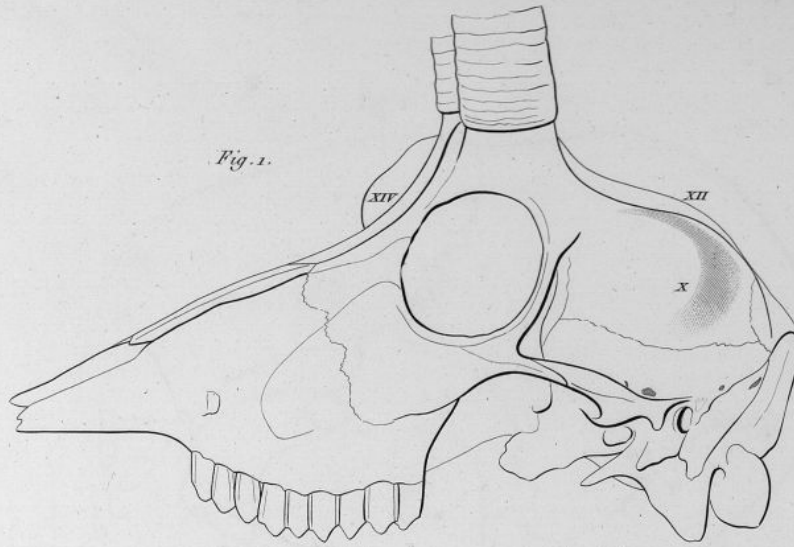


Fig. 2.

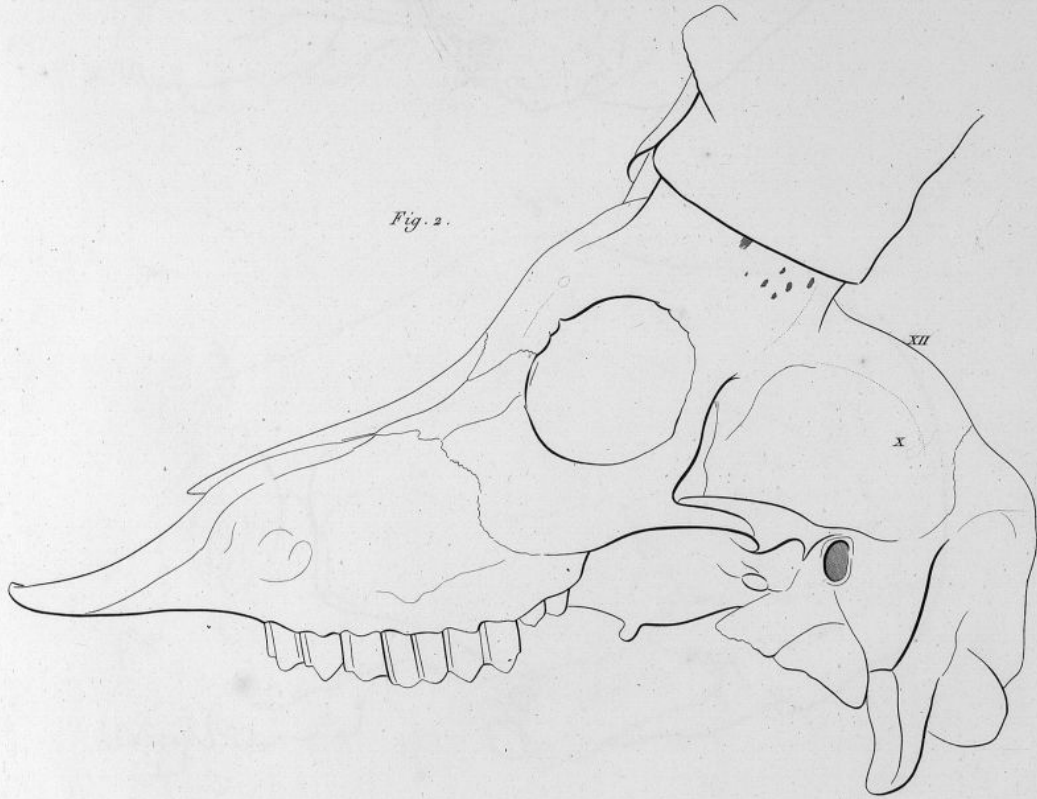


Fig. 1.

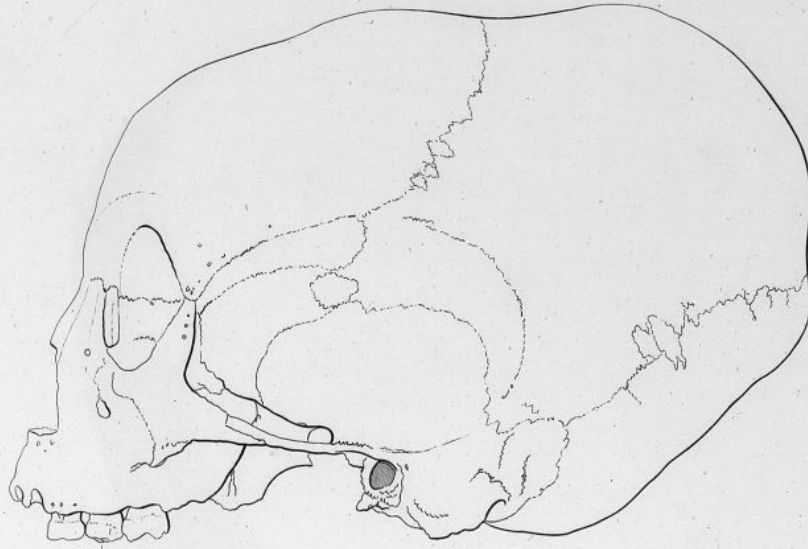
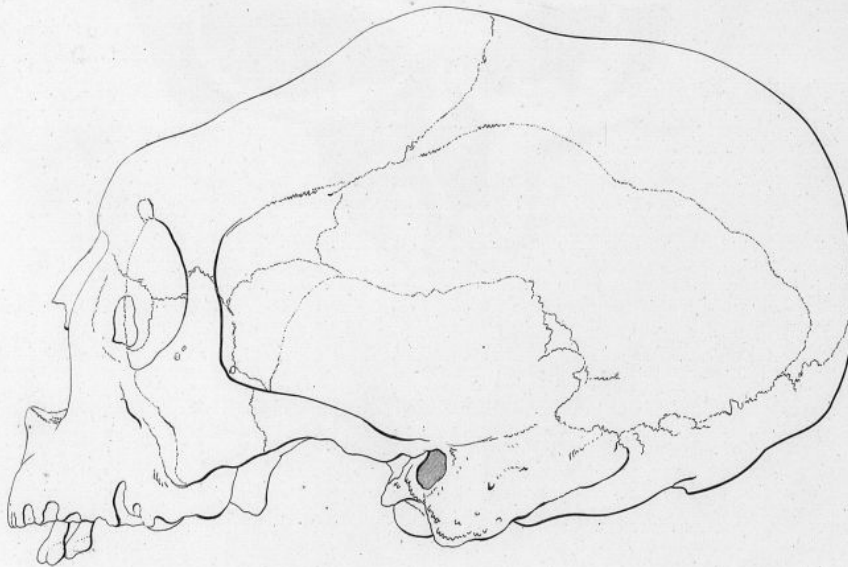
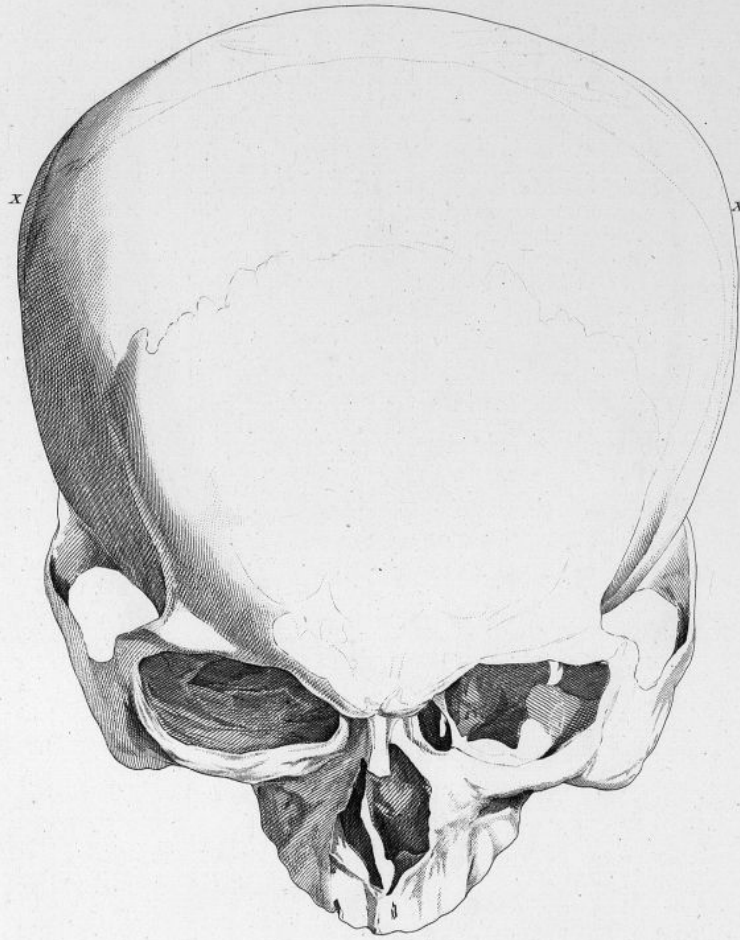


Fig 2.





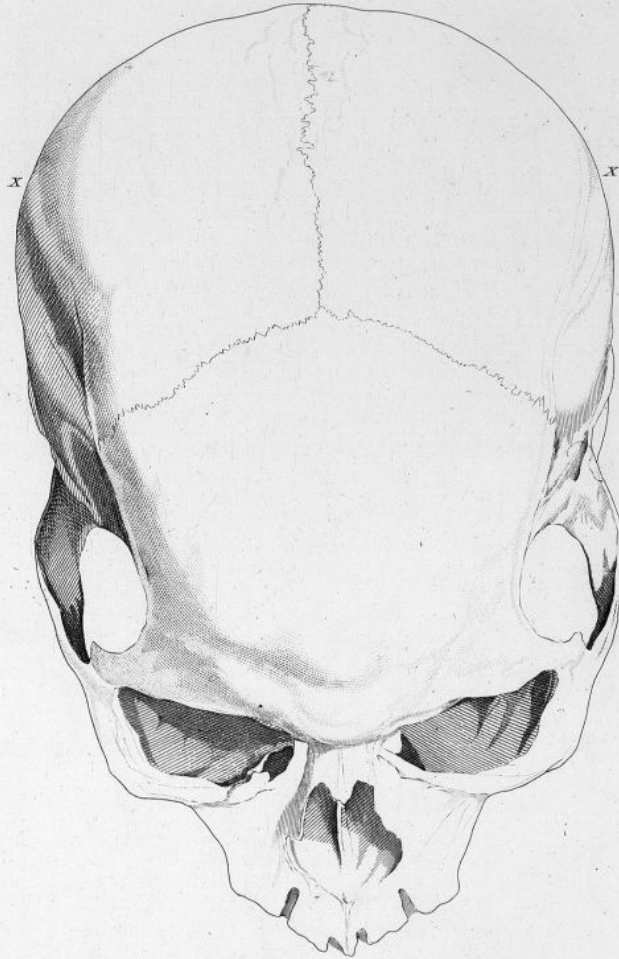


Fig. 1.

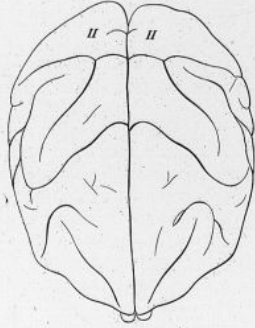


Fig. 2.

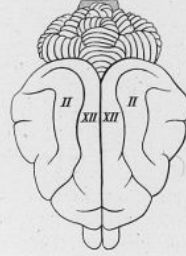


Fig. 4.

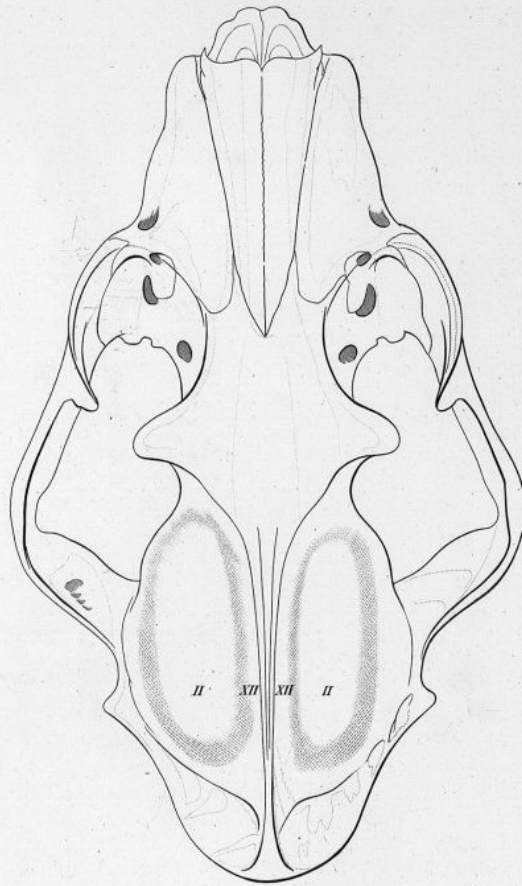
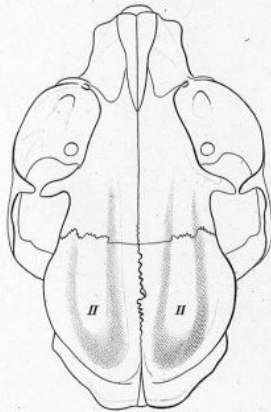


Fig. 3.



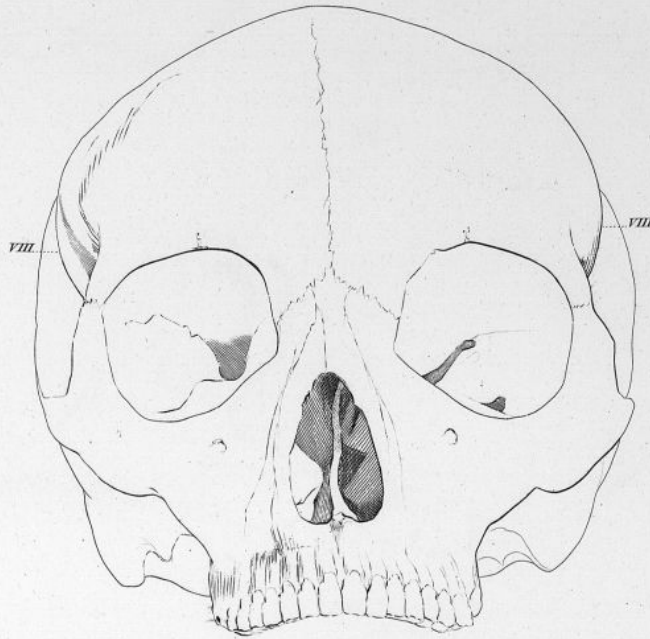


Fig. 1.



Fig. 2.

PL. LXXIX.



Fig. 3.

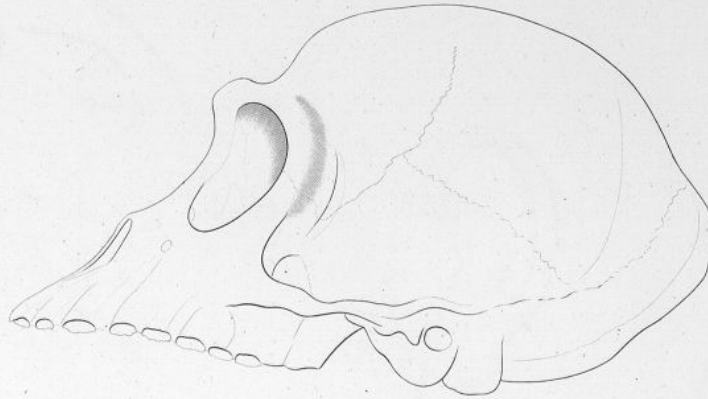
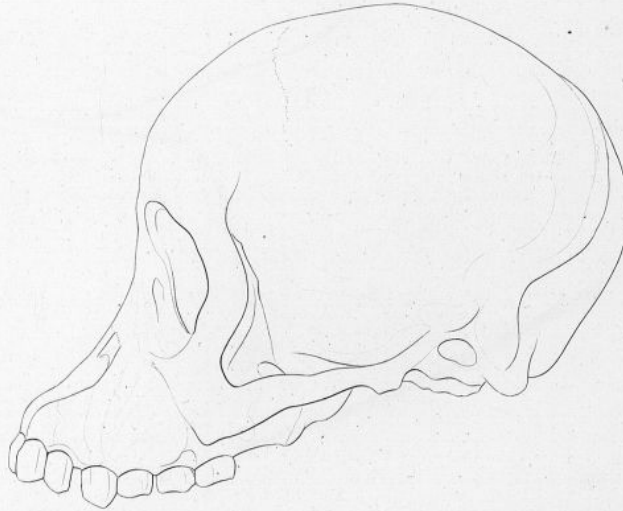
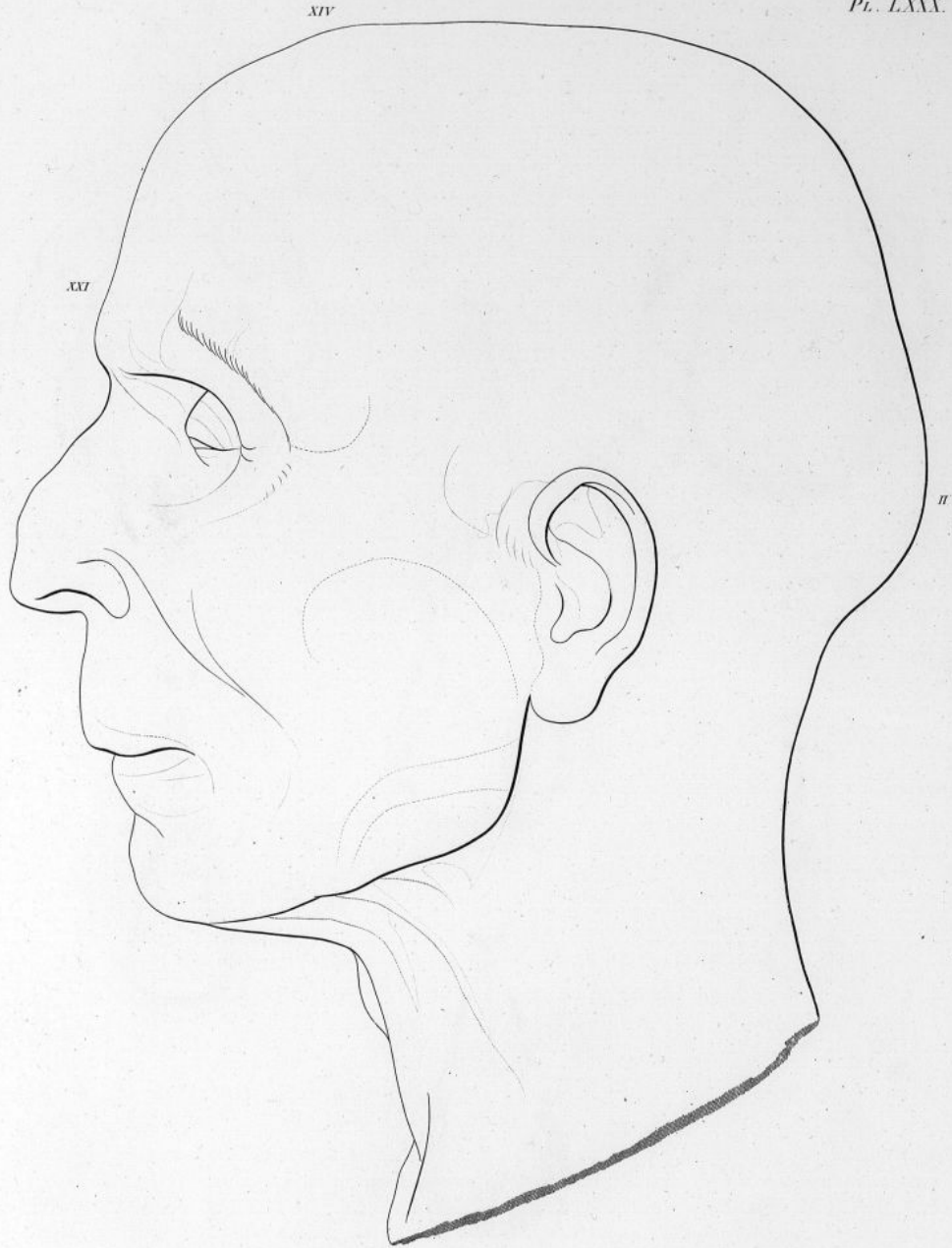
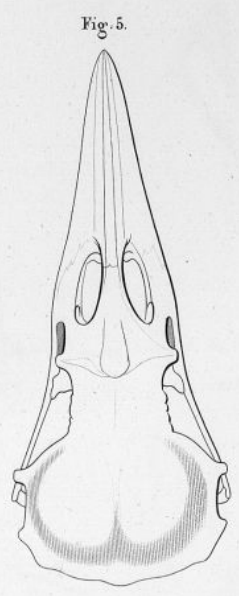
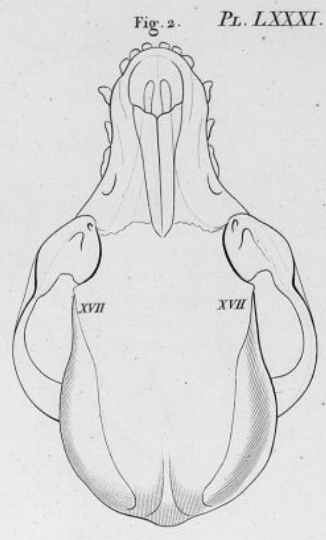
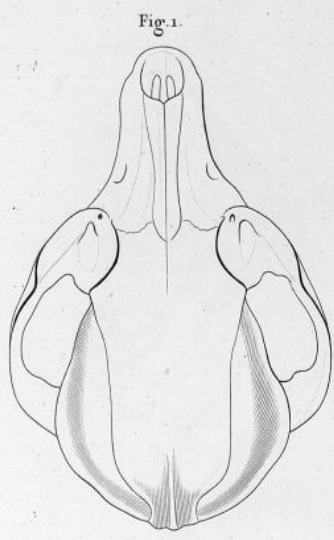


Fig. 4.







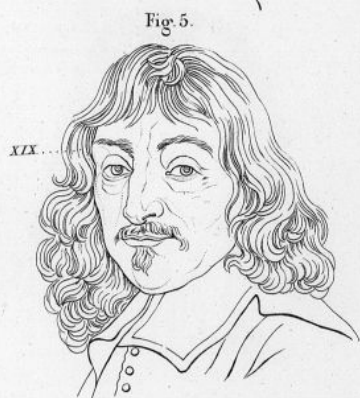


Fig. 1.



Fig. 2.



Fig. 3.



Fig. 4.



Fig. 5.



Fig. 6.



Fig. 1.



Fig. 2.



Fig. 3.



Fig. 4.



Fig. 4.



Fig. 5.



Fig. 6.



Fig. 1.



Fig. 2.



Fig. 4.



Fig. 3.



Fig. 6.



Fig. 5.



Fig. 1.



Fig. 2. *Pl. LXXXVI.*



Fig. 4.



Fig. 5.



Fig. 6.



Fig. 5.



Fig. 1.



Fig. 2.



Fig. 8.



Fig. 3.



Fig. 4.



Fig. 6.



Fig. 7.



Fig. 5.



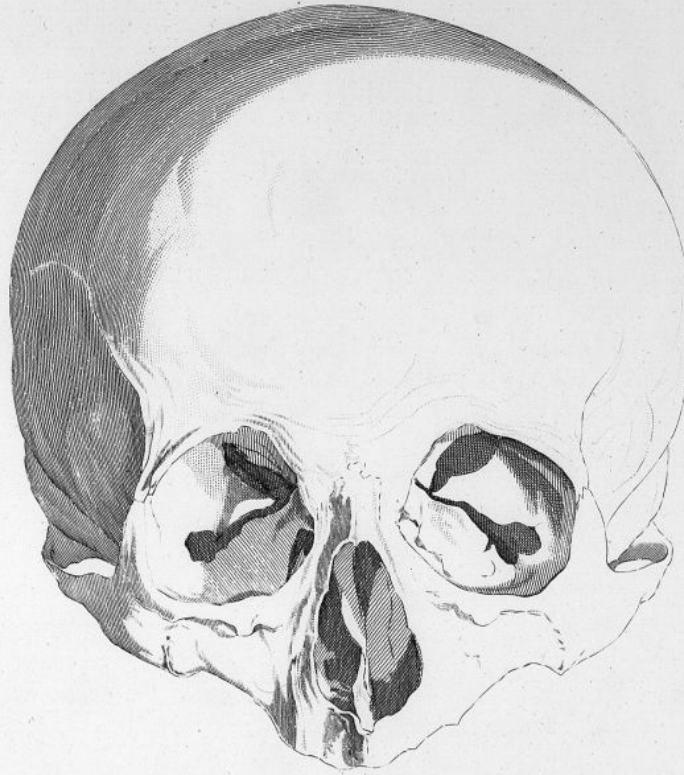


Fig. 1.

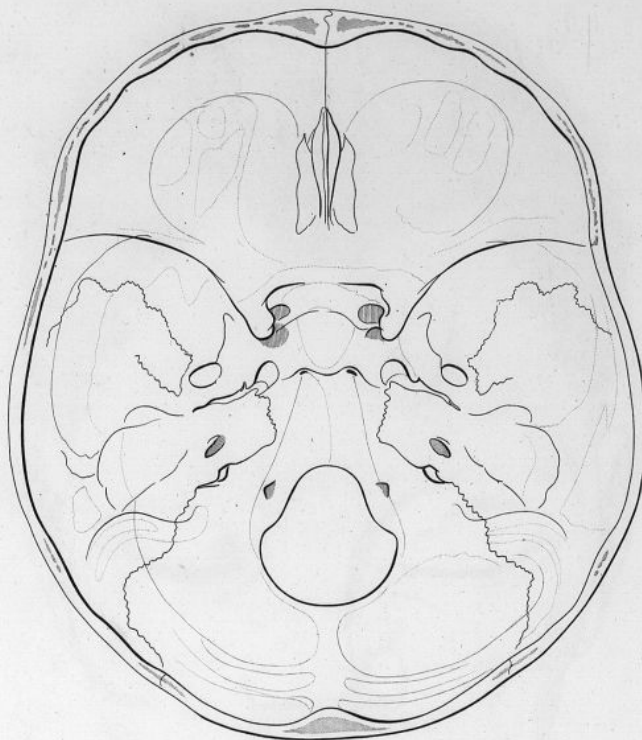
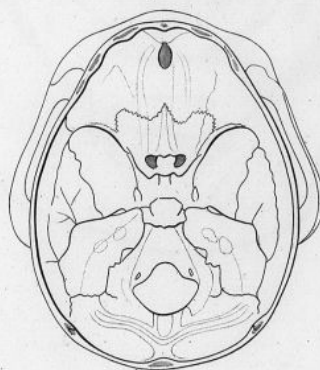
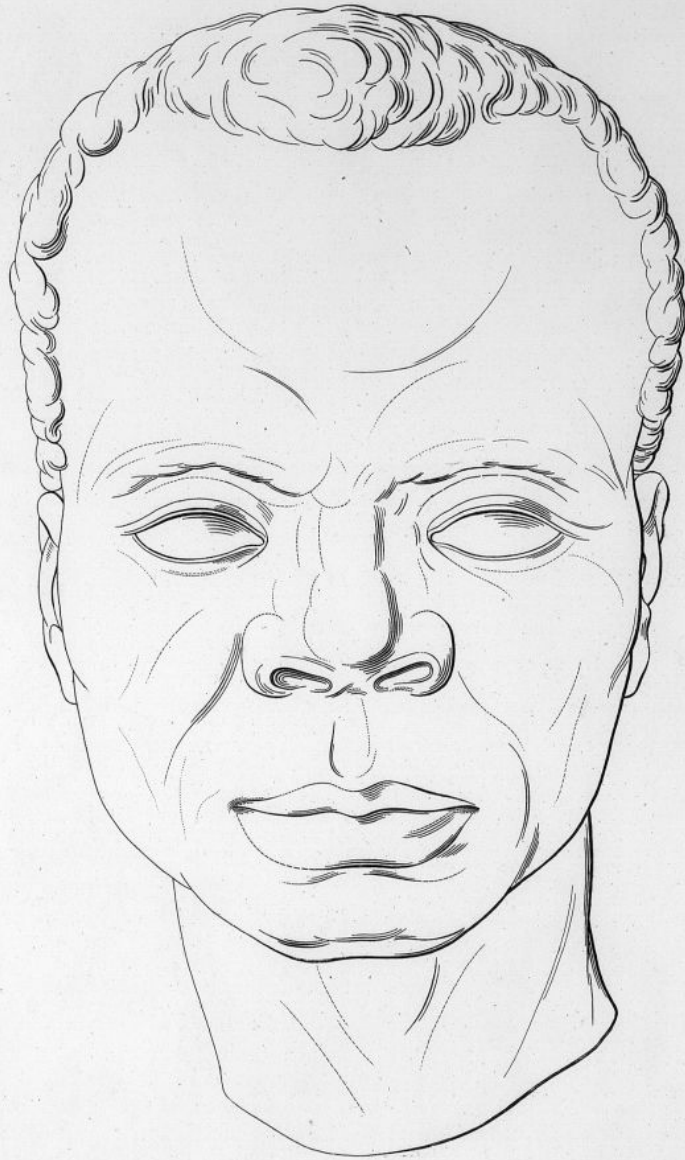


Fig. 2.







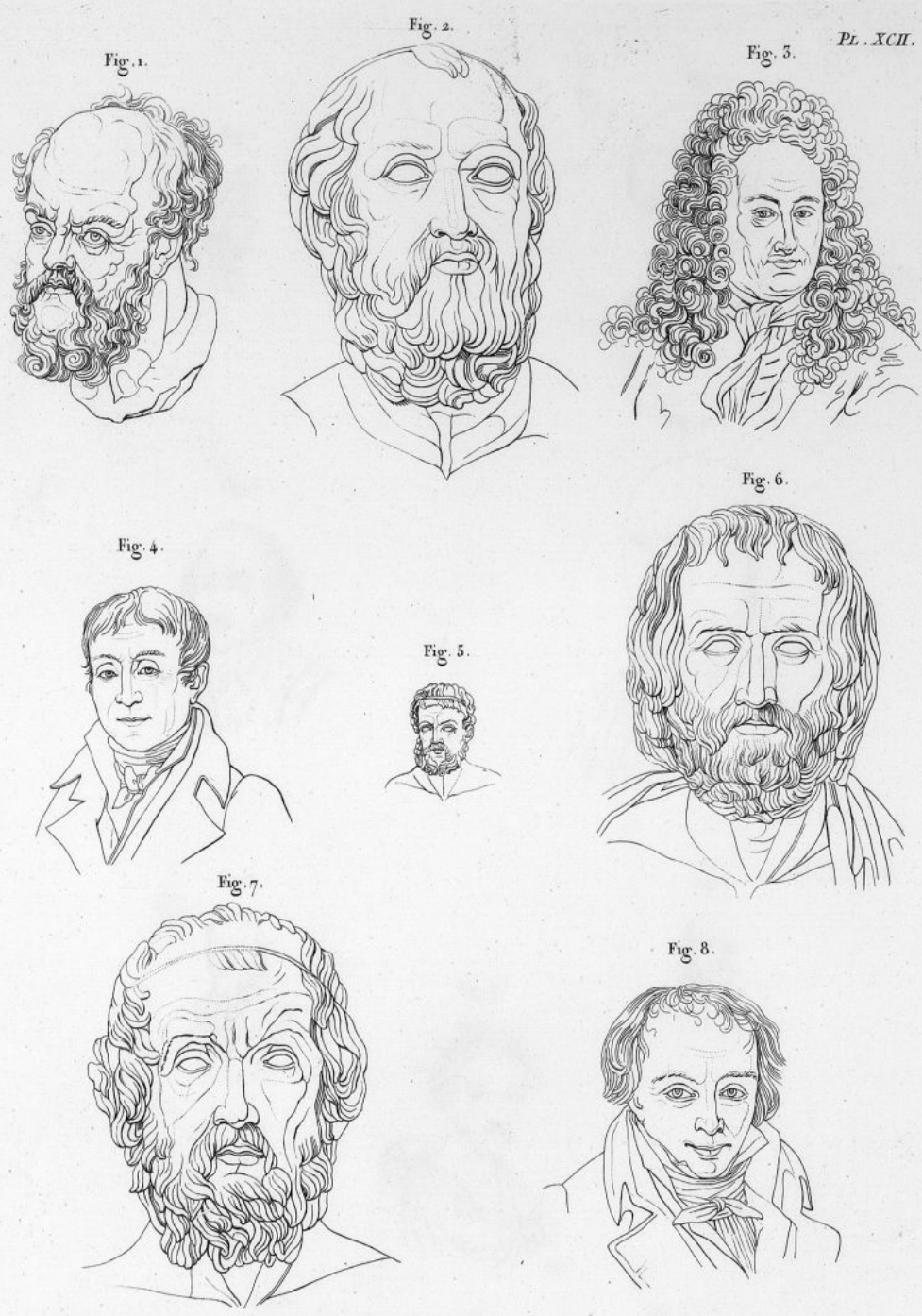


Fig. 1.



Fig. 2.



Fig. 4.



Fig. 5.



Fig. 5.



Fig. 6.



Fig. 7.



Fig. 1.



Fig. 2.



Fig. 3.



Fig. 4.



Fig. 5.



Fig. 6.



Fig. 7.



Fig. 8.



Fig. 9.



Fig. 10.



Fig. 11.



Fig. 12.



Fig. 1.



Fig. 2.



Fig. 5.



Fig. 4.



Fig. 5.

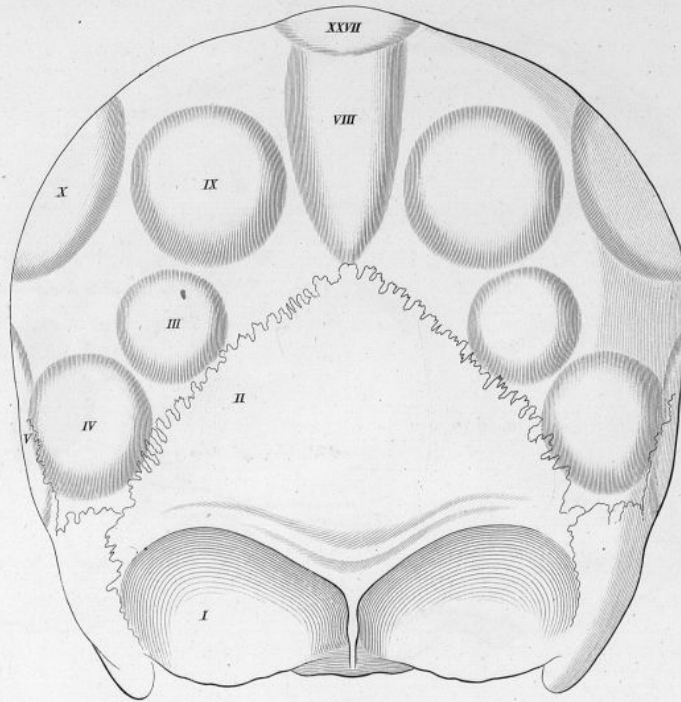


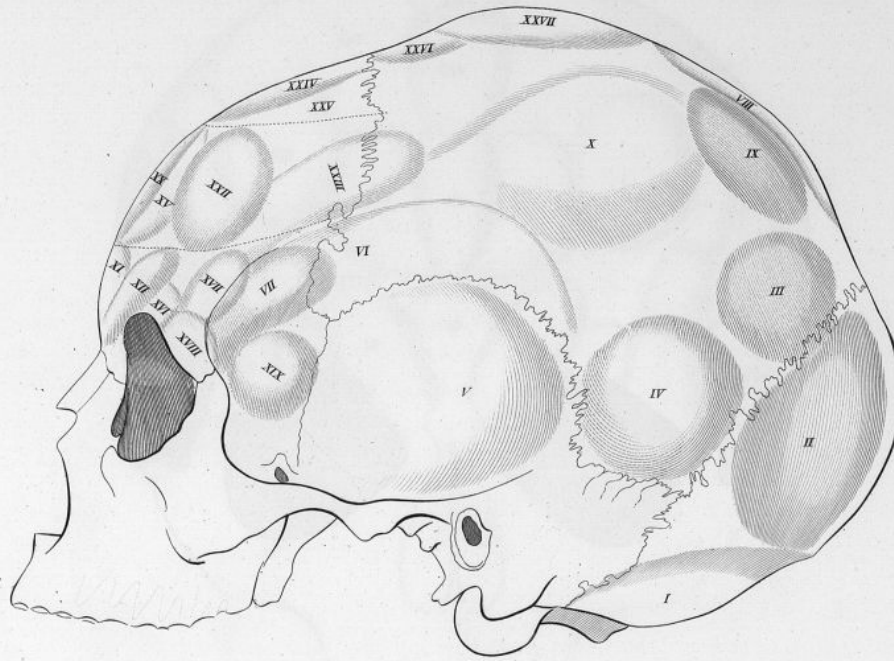
Fig. 6.

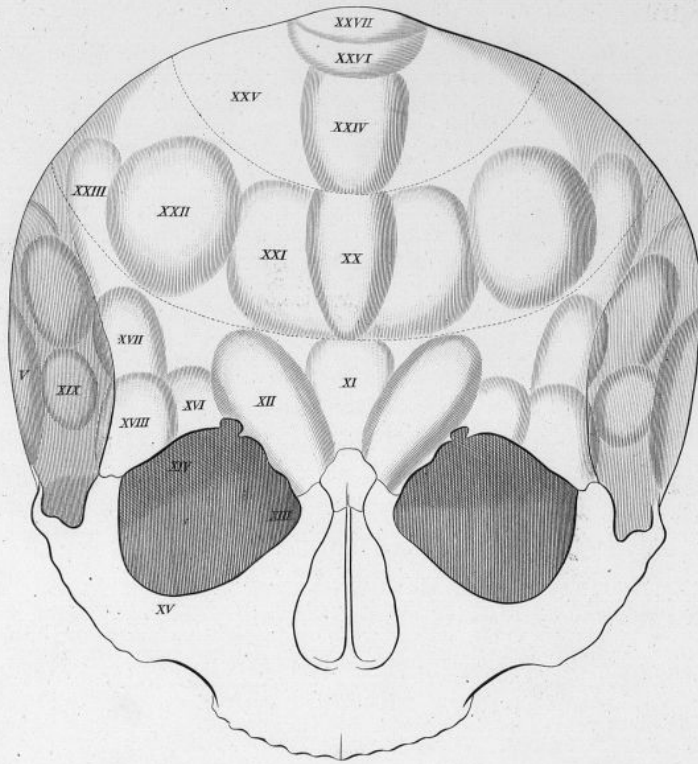


Pl. XCVI.

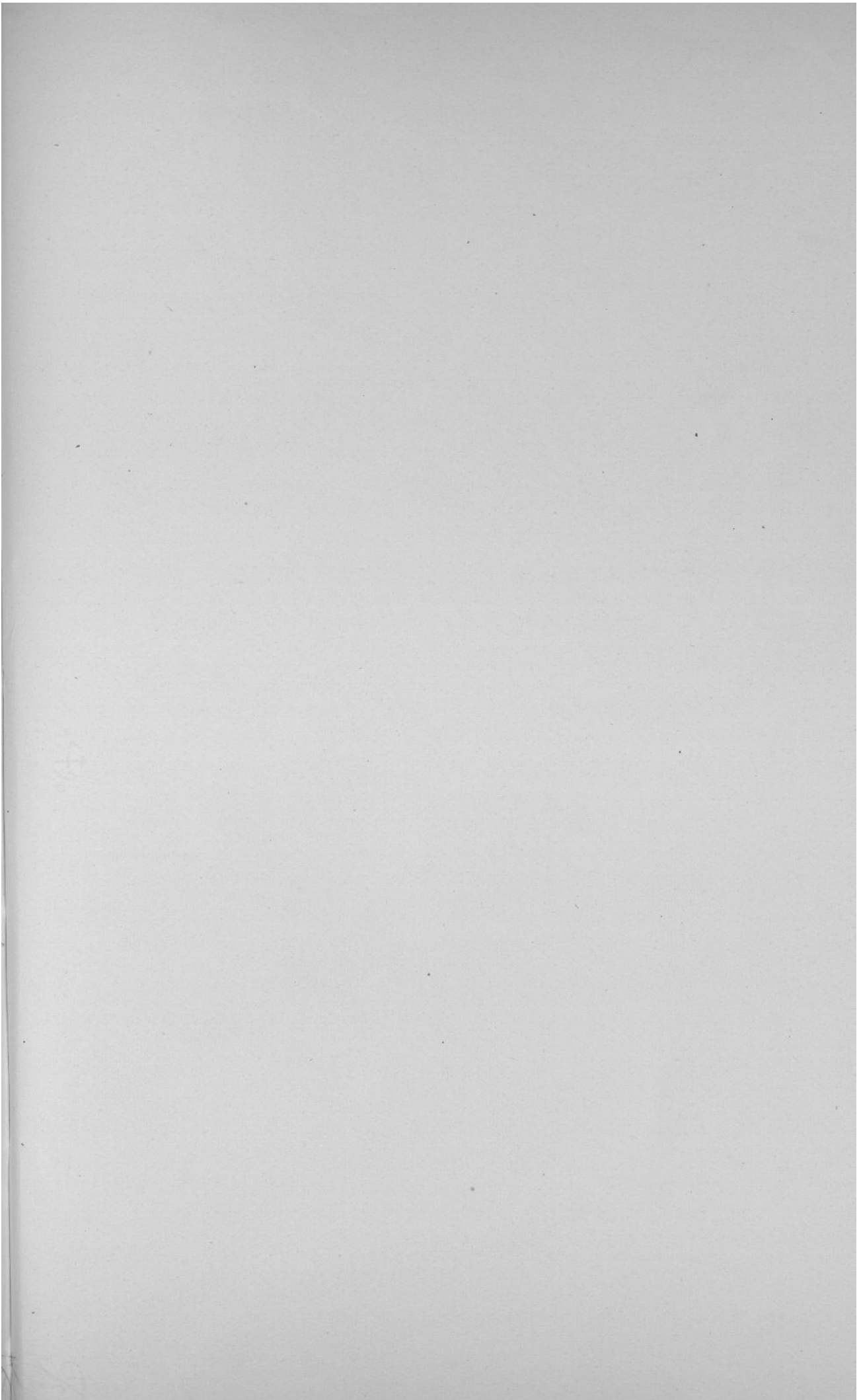








prologue B



J. Ferroud

