

**Brogniez, André-Joseph. Traité de chirurgie vétérinaire, par A. J. Brogniez, membre de l'Académie royale de médecine de Bruxelles... Atlas de 47 planches noires et coloriées représentant 433 figures**

*Bruxelles : Société encyclographique des sciences médicales, 1842.*

*Cote : 112003 ENVA*





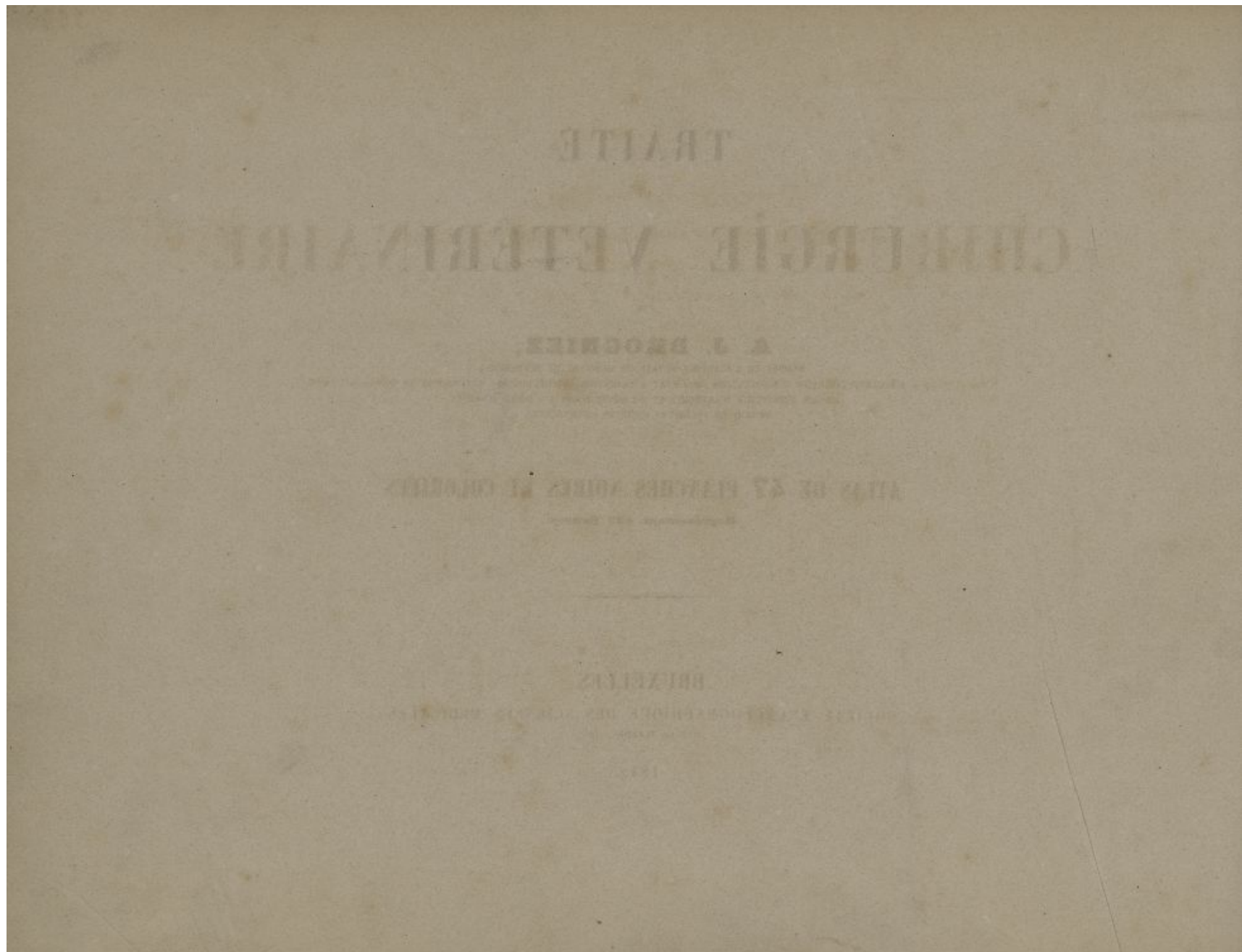












F82

112.003

TRAITÉ  
DE  
**CHIRURGIE VÉTÉRINAIRE**

PAR

**A. J. BROGNIEZ,**

MEMBRE DE L'ACADÉMIE ROYALE DE MÉDECINE DE BRUXELLES,  
PROFESSEUR A L'ÉCOLE VÉTÉRINAIRE D'AGRICULTURE DE L'ÉTAT A CUREGHEM LEZ-BRUXELLES, VÉTÉRINAIRE DE PREMIÈRE CLASSE,  
ANCIEN RÉPÉTITEUR D'ANATOMIE ET DE PHYSIOLOGIE A L'ÉCOLE D'ALFORT,  
MEMBRE DE PLUSIEURS SOCIÉTÉS SCIENTIFIQUES.

**ATLAS DE 47 PLANCHES NOIRES ET COLORIÉES**

Représentant 433 figures.

BRUXELLES,

SOCIÉTÉ ENCYCLOGRAPHIQUE DES SCIENCES MÉDICALES,  
RUE DE FLANDRE, 155.

1842.

# **TABLEAU INDICATIF** **POUR LE RENVOI DES PLANCHES AU TEXTE.**

## TOME I. — SIDEROTECHNIE.

Planche 1 composée de 4 figures . . . . .	page	XXIII	Planche 6. . . . .	page	100
— 2 . . . . .		18	— 7. . . . .		120
— 3 . . . . .		22	— 8. . . . .		144
— 4 . . . . .		34	— 9. . . . .		176
— 5 . . . . .		96	— 10. . . . .		200

## TOME II. — CHIRURGIE.

Planche 1 . . . . .	page	51	Planche 10. . . . .	page	301
— 2 . . . . .		78	— 11. . . . .		339
— 3. . . . .		94	— 12. . . . .		355
— 4. . . . .		145	— 13. . . . .		362
— 5. . . . .		168	— 14. . . . .		372
— 6. . . . .		208	— 15. . . . .		380
— 7. . . . .		227	— 16. . . . .		386
— 8. . . . .		231	— 17. . . . .		442
— 9. . . . .		272			

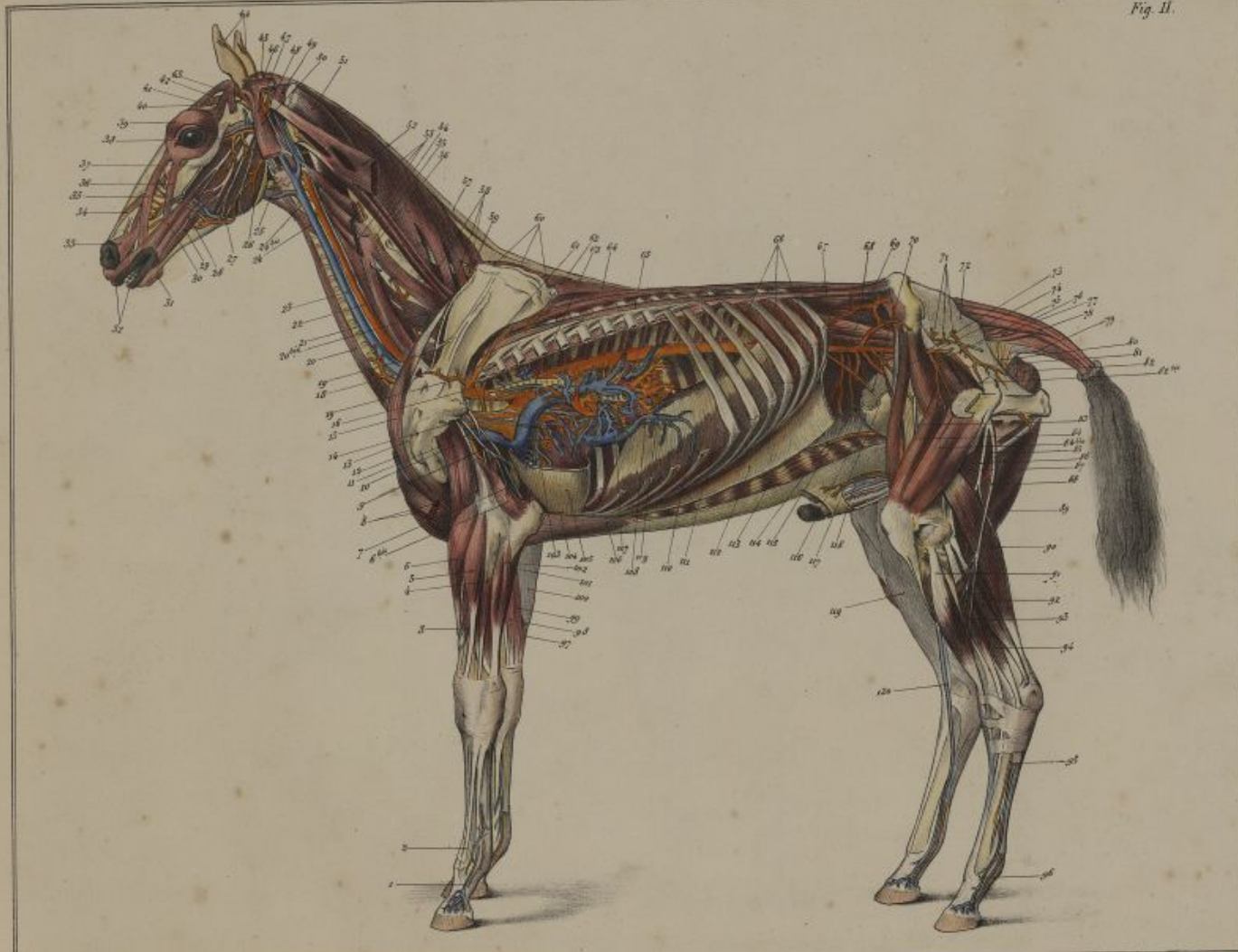
## TOME III. — CHIRURGIE.

Les planches 18 à 37 se trouvent à la fin du volume.





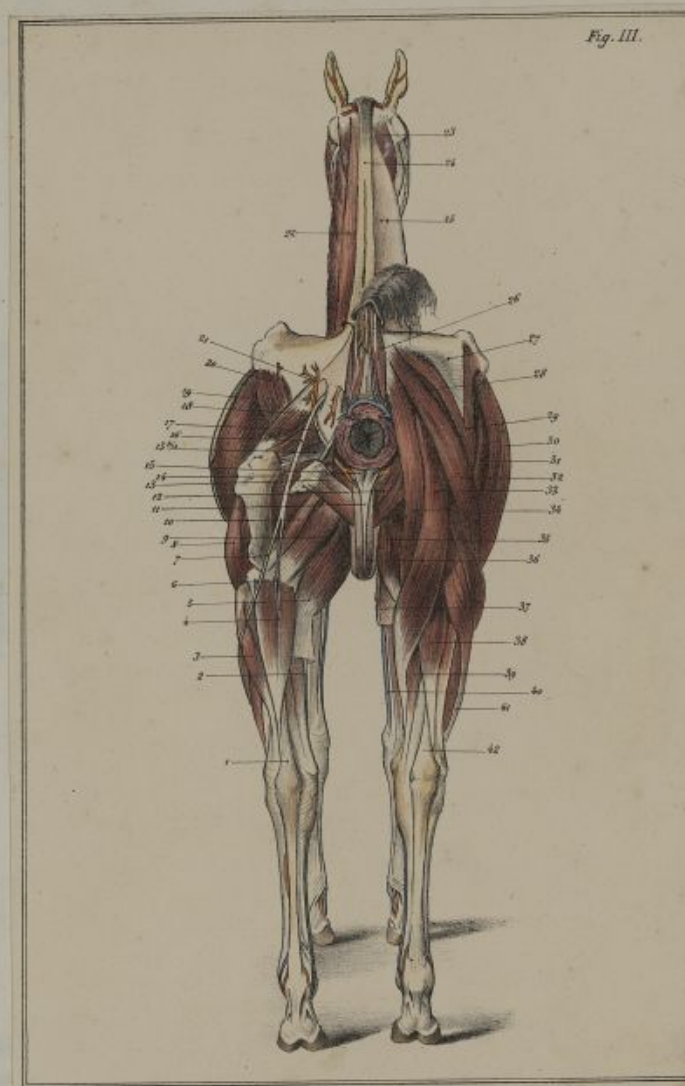
Fig. II.

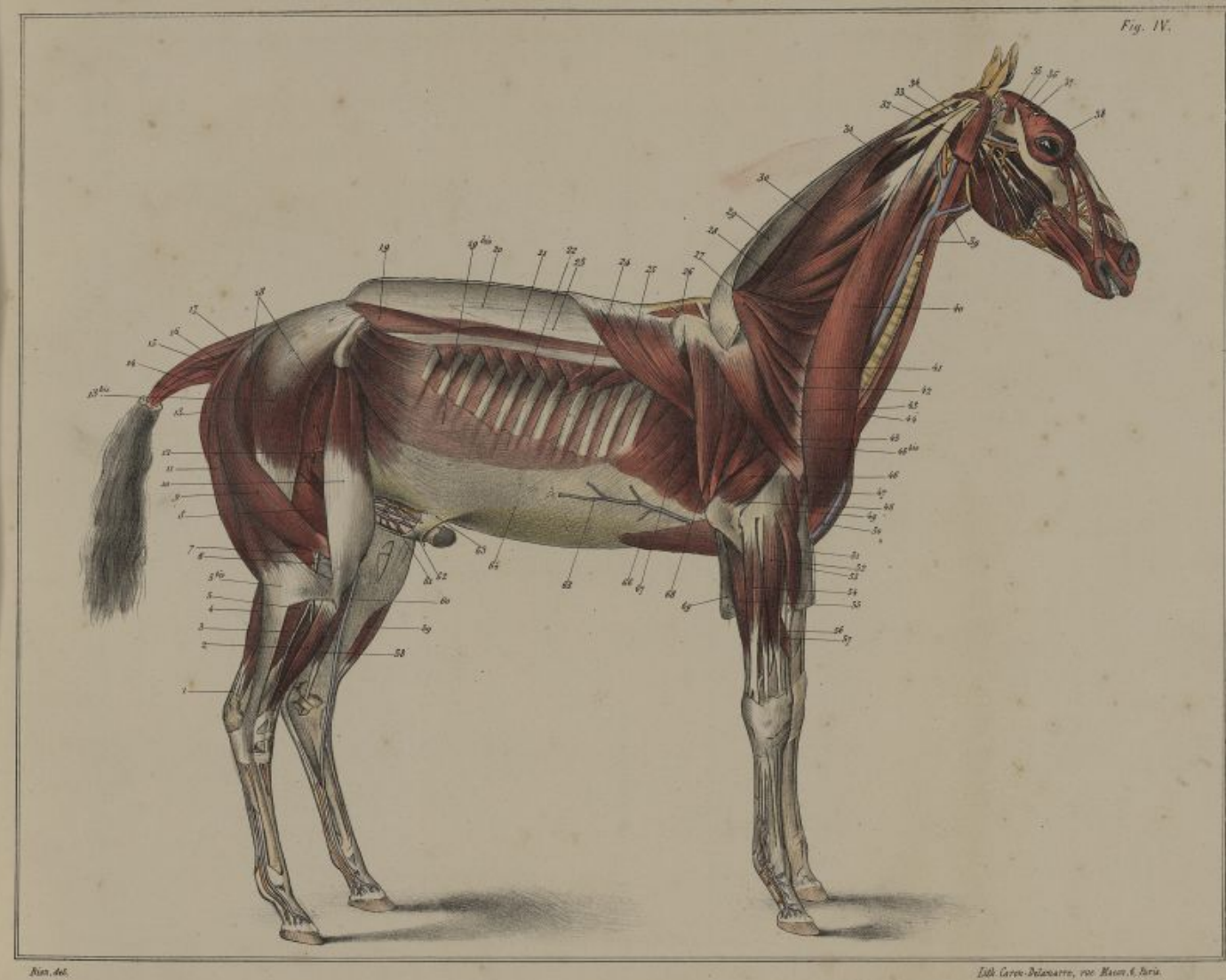


Riou, del.

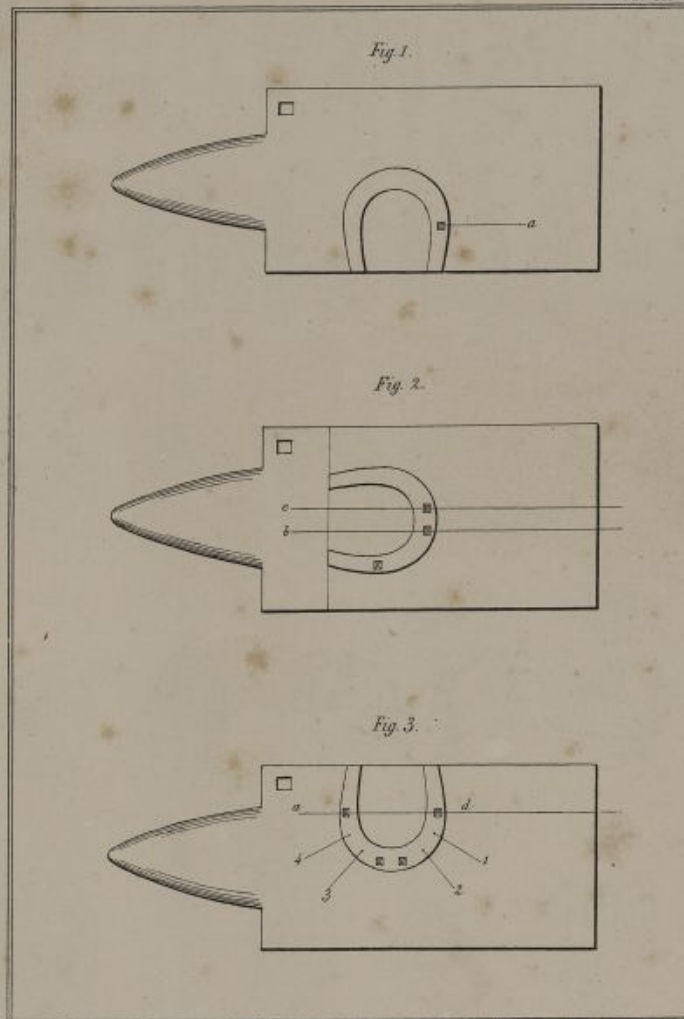
Lith. Larou-Delaunay, rue de la Harpe, Paris.



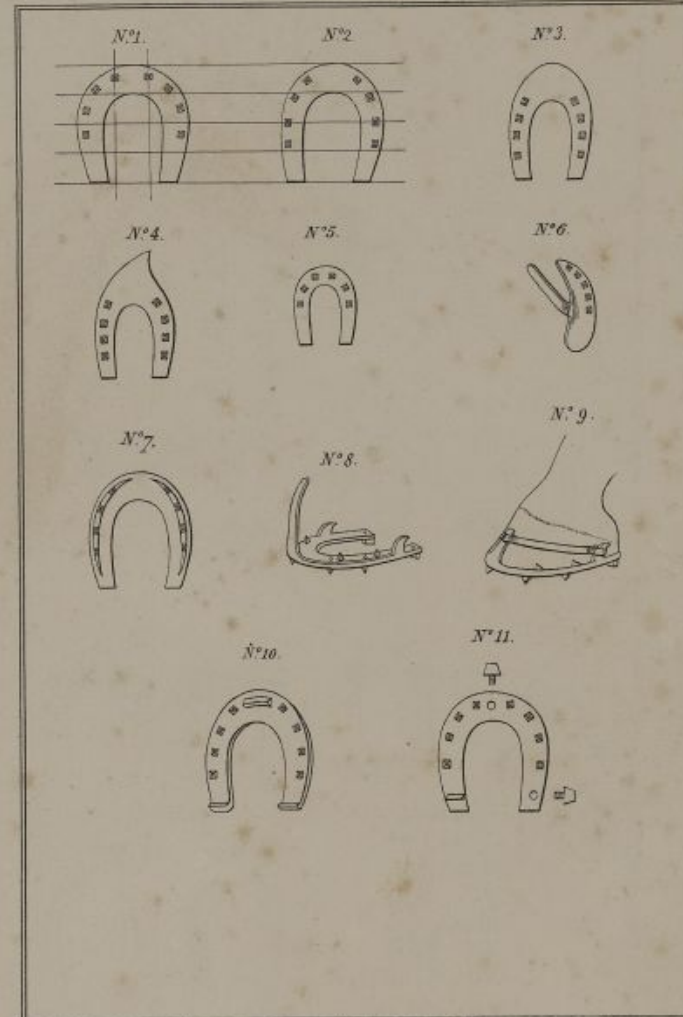




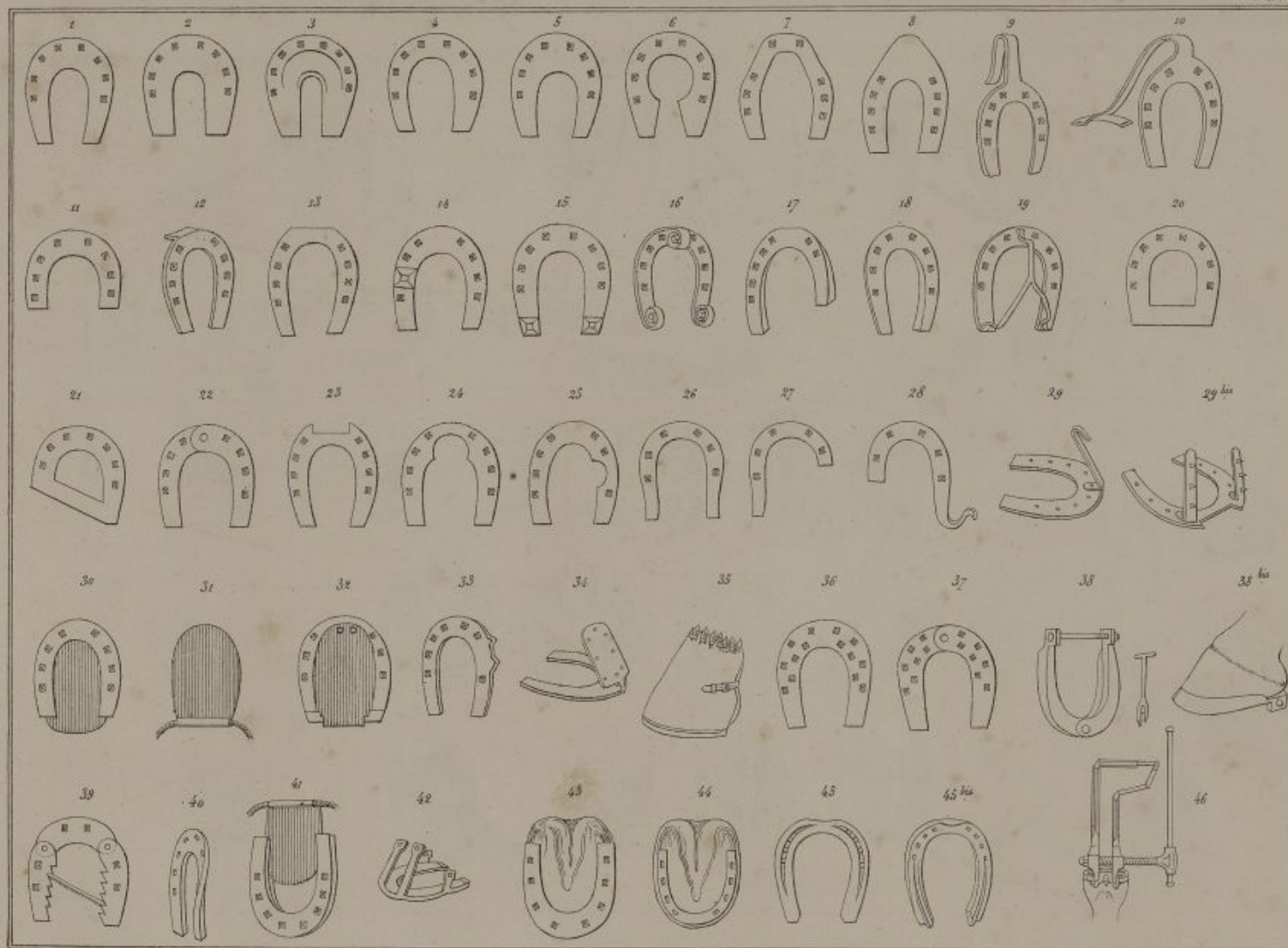




Idem. Caron-Delaunay, rue de la Harpe, 6, Paris.

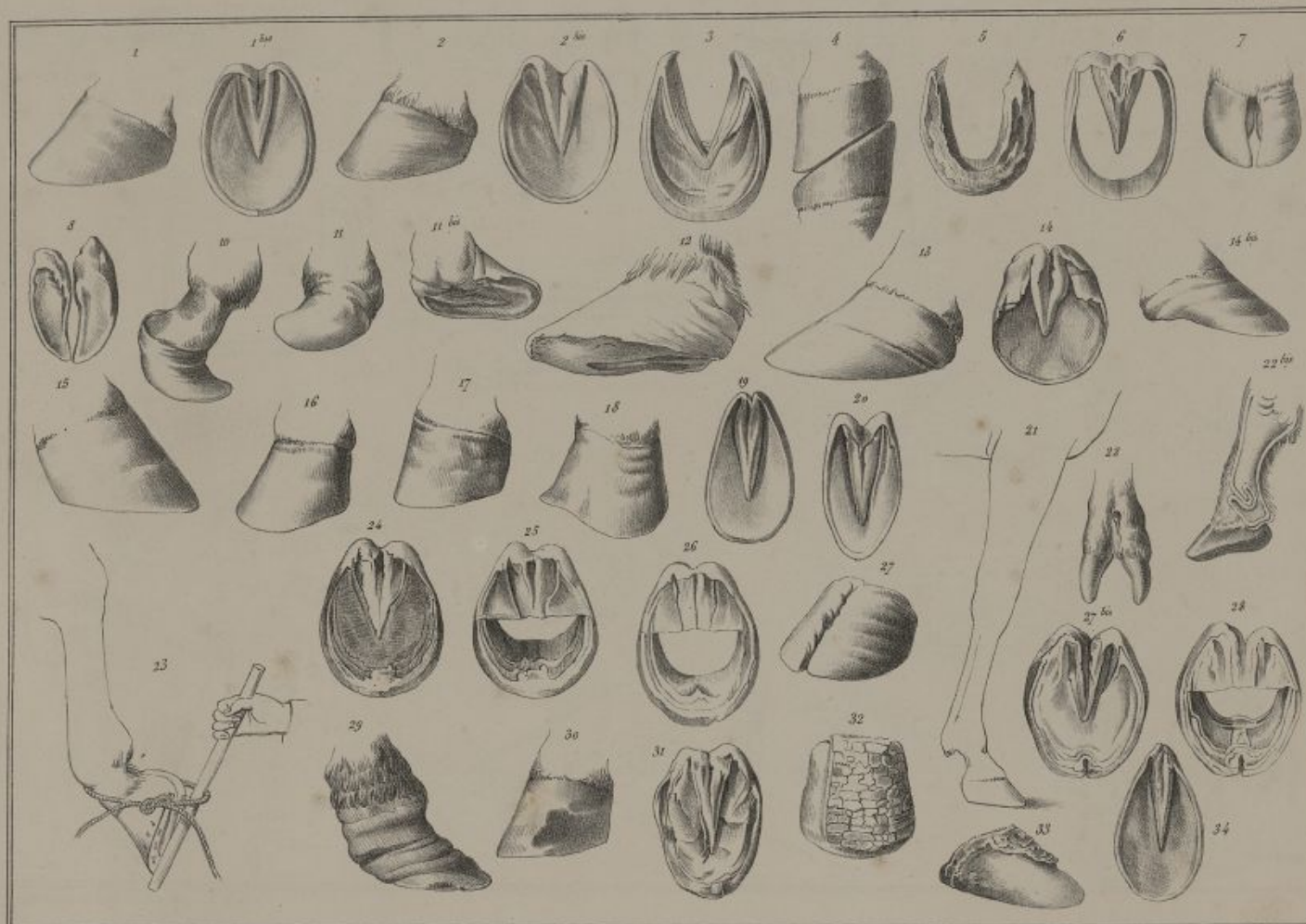


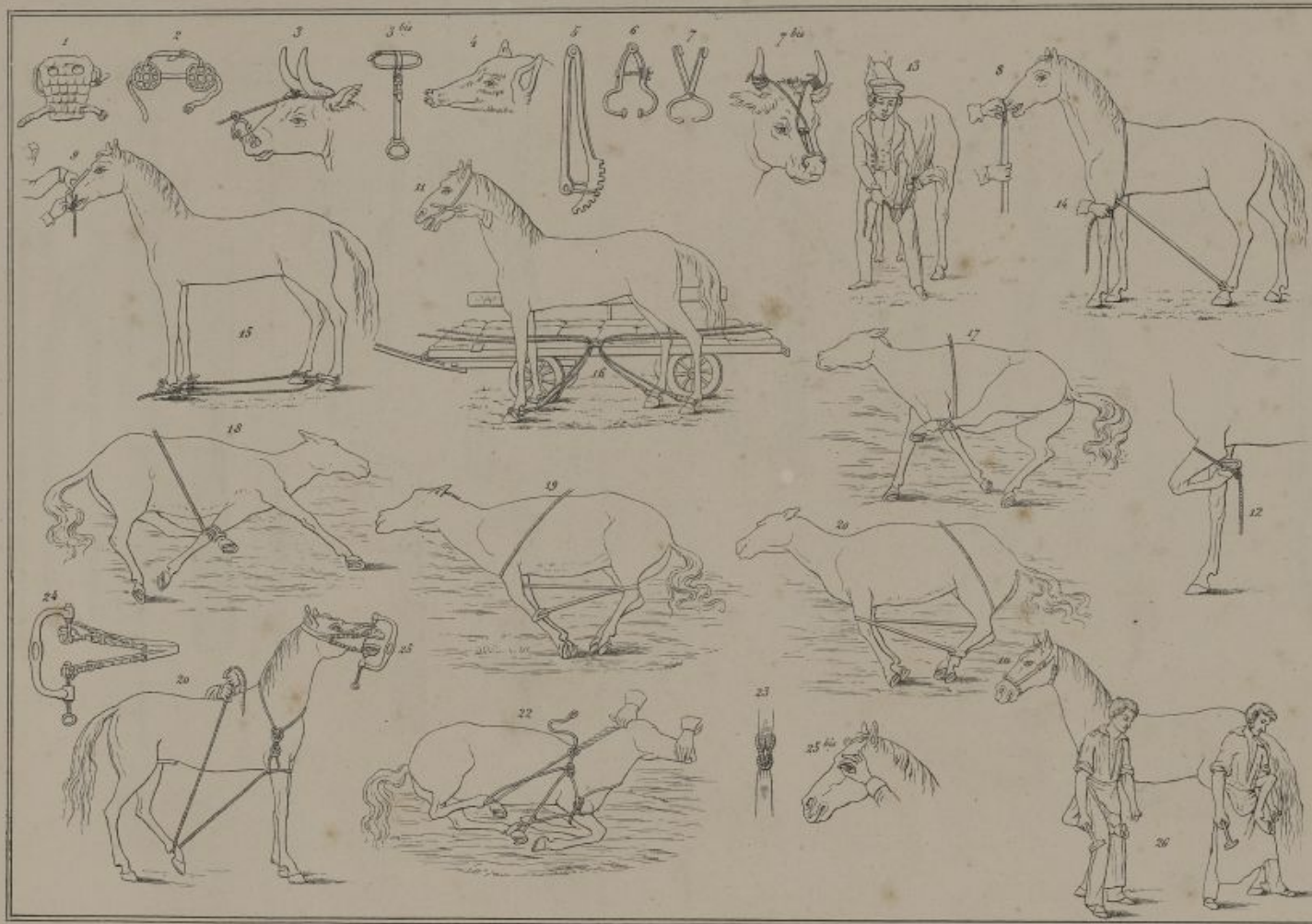
Idem. Caron-Delaunay, rue de la Harpe, 6, Paris.



Lith. Goussier-Delaunay, rue de la Harpe, 6, 2-4



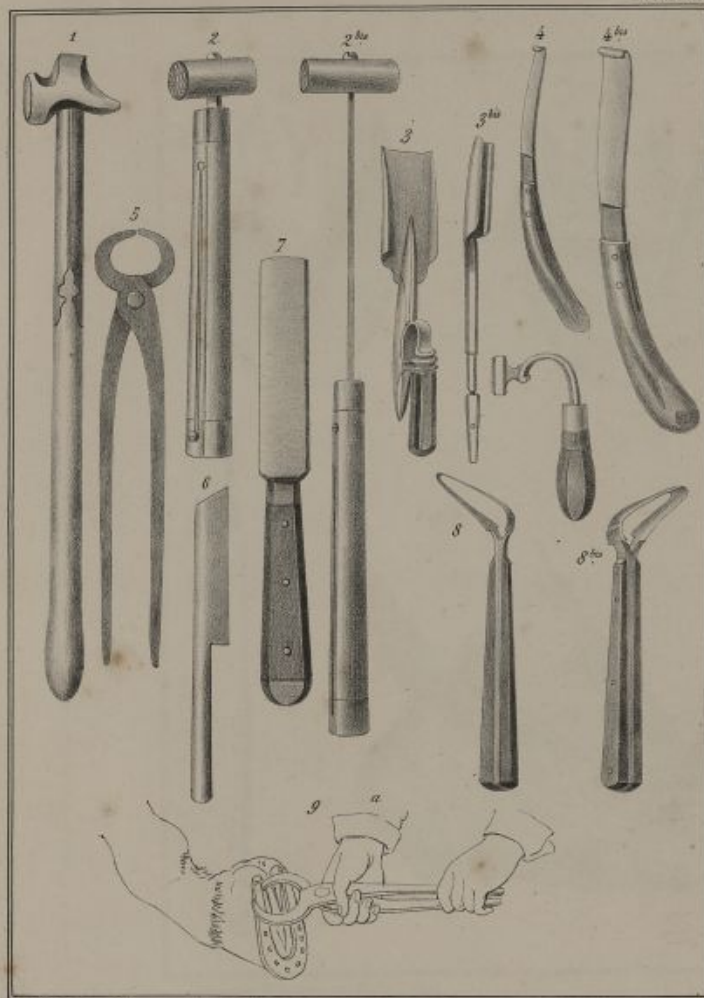




Lith. Caron-Delaunay, rue Mazarin, 8, Paris.



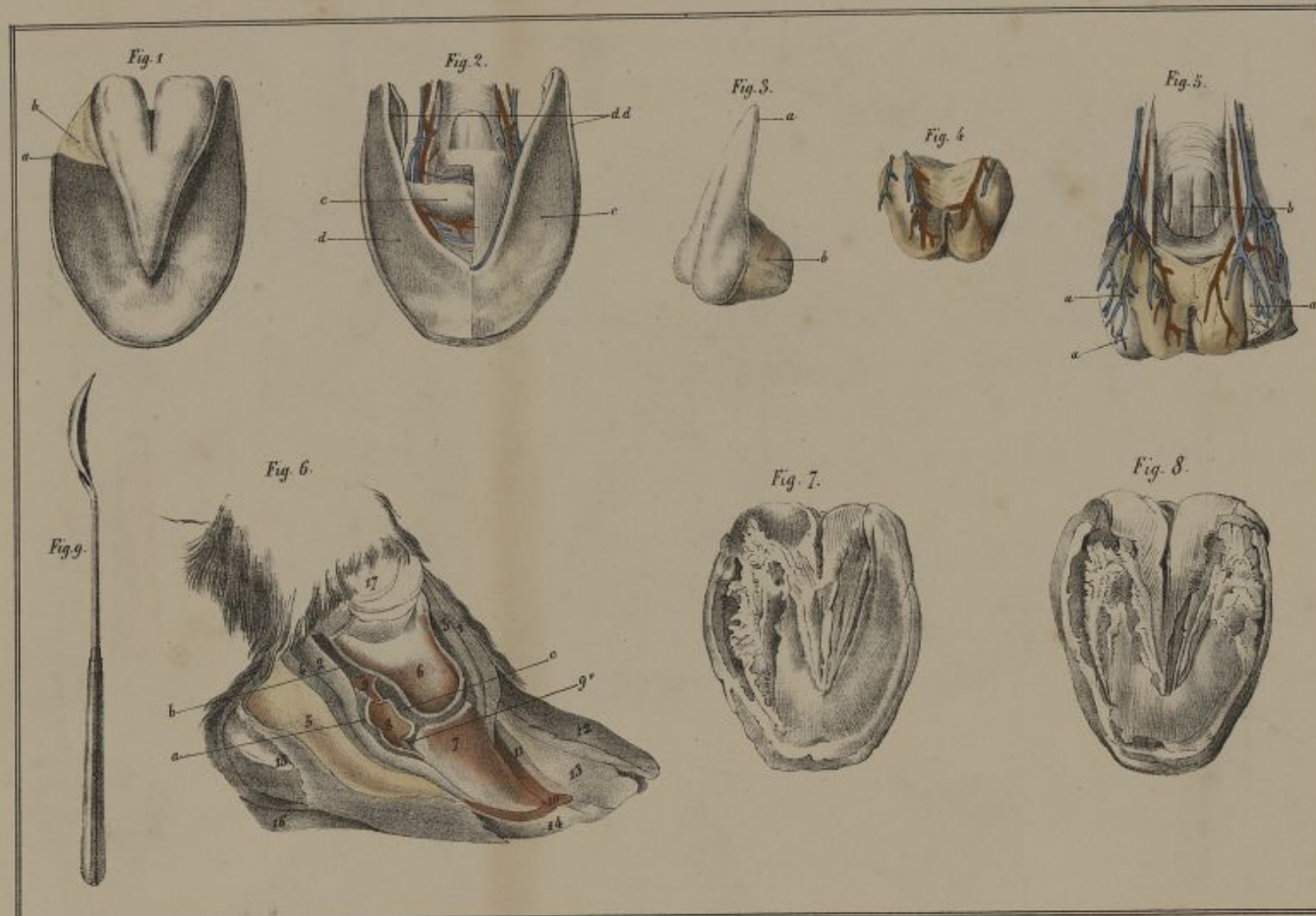
PL. VII.



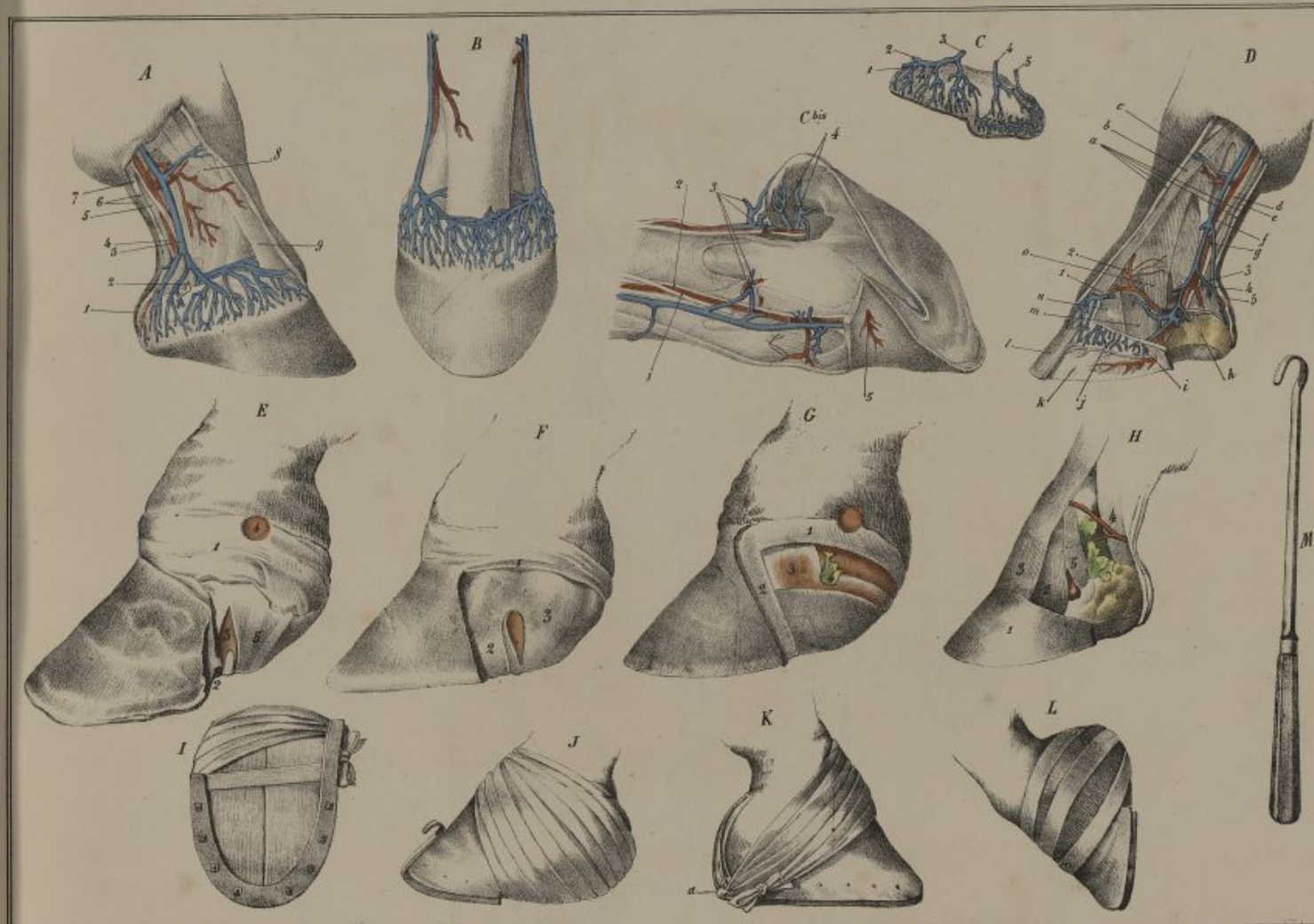
Lith. de Caron - Delamare, pour des Augustin, 7.

PL. VIII.



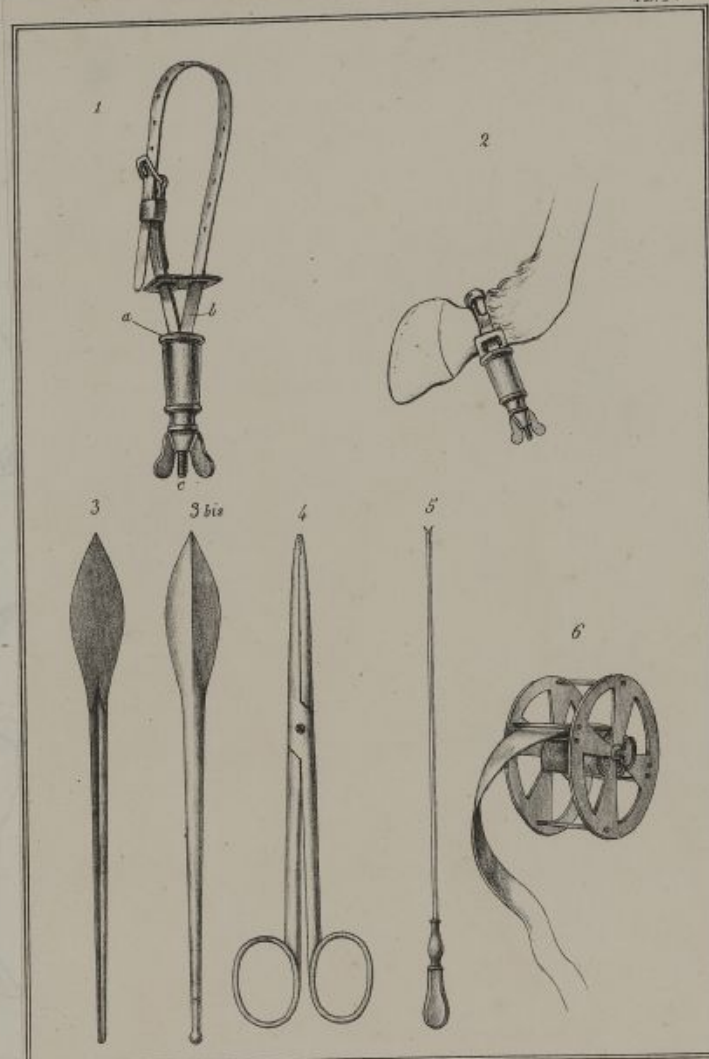


*Lith. Caroi-Delamarre, rue Macon, 6, Paris*

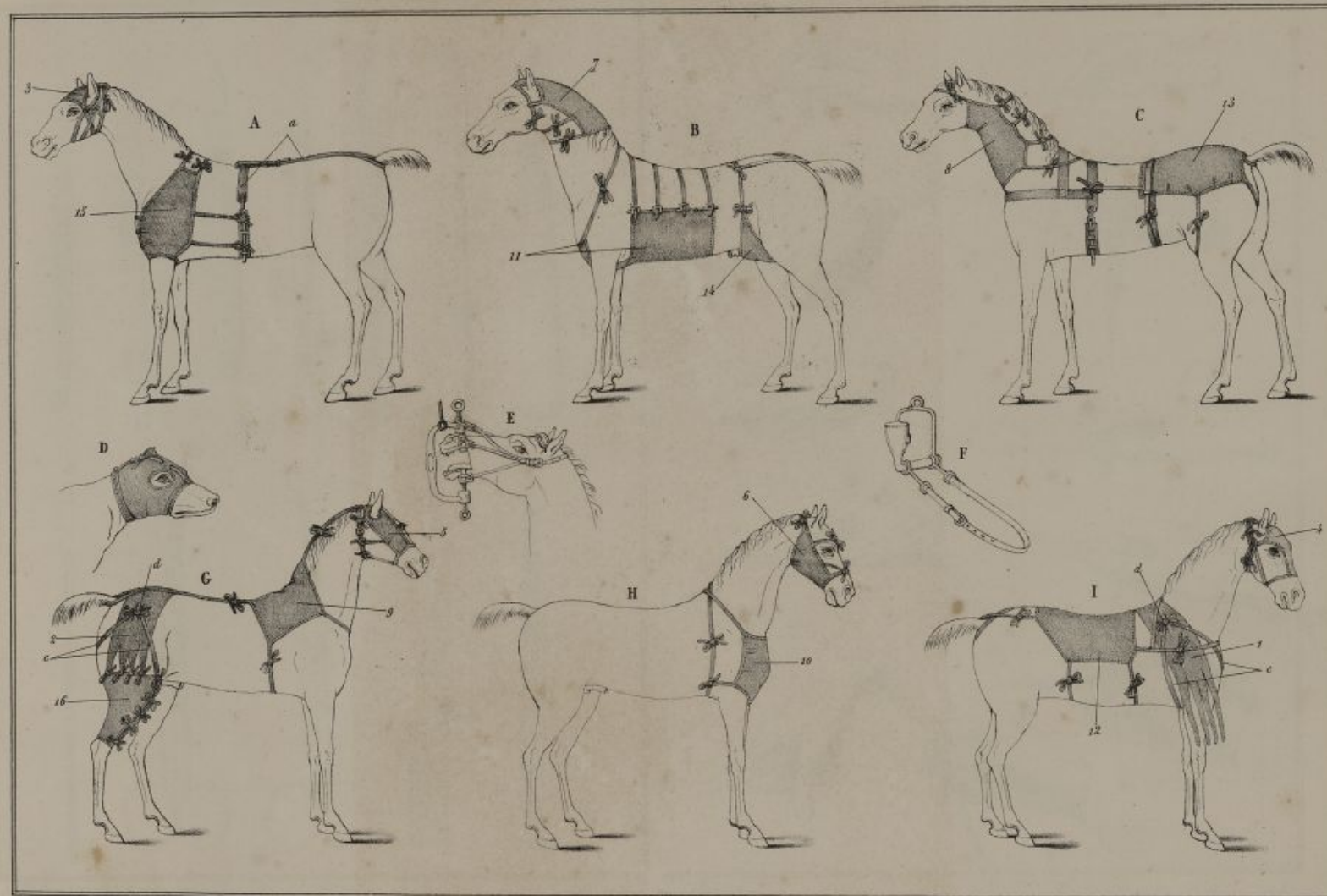


Lith. Caron-Delamarro, rue Macon, 8, Paris.

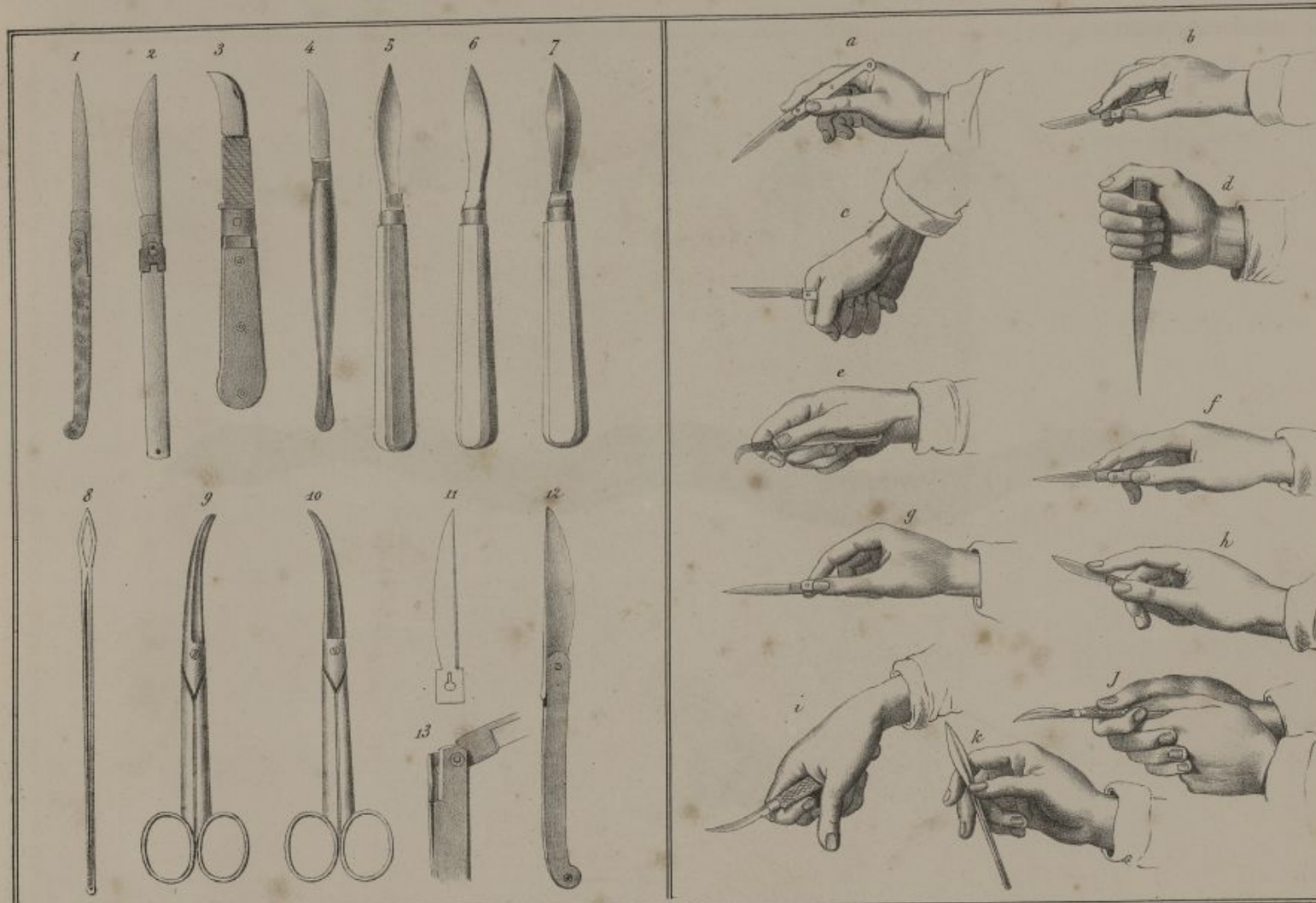




Lith. Caron - Delamarre, rue Macon, 6, Paris.



Lith. Caron-Delamarre, rue Macco, 6, Paris.

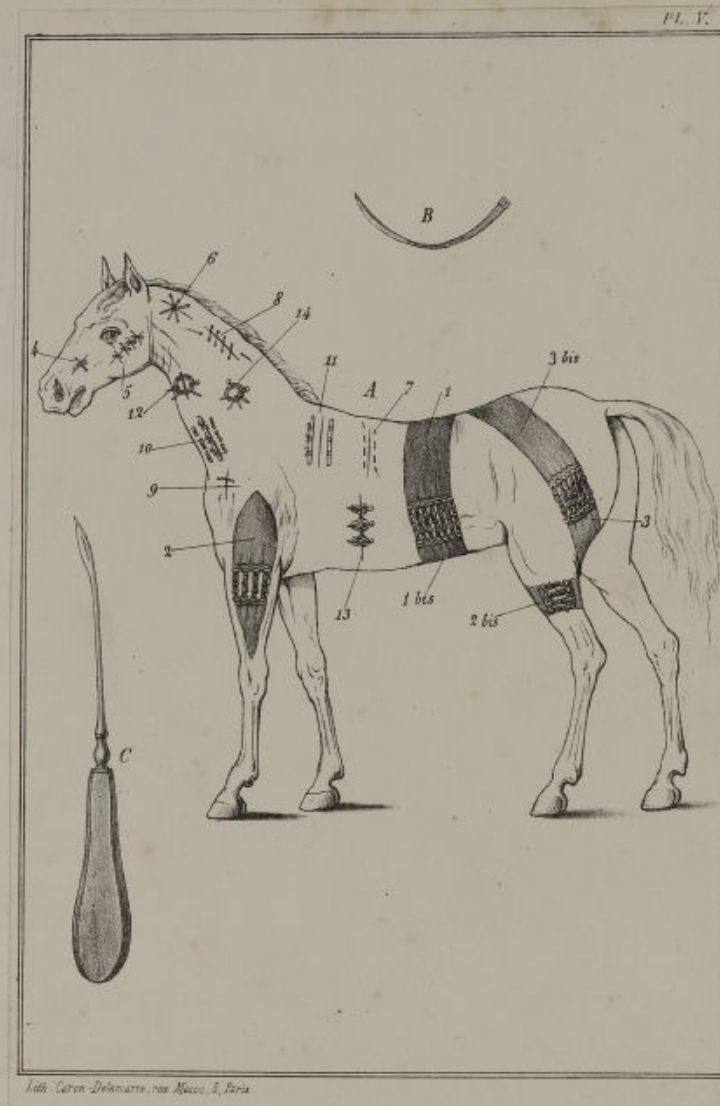


L'abb. Caron-Soliman, quai du Louvre, 17





*Idem. Paris. Delaunay, rue de la Harpe, 1792.*

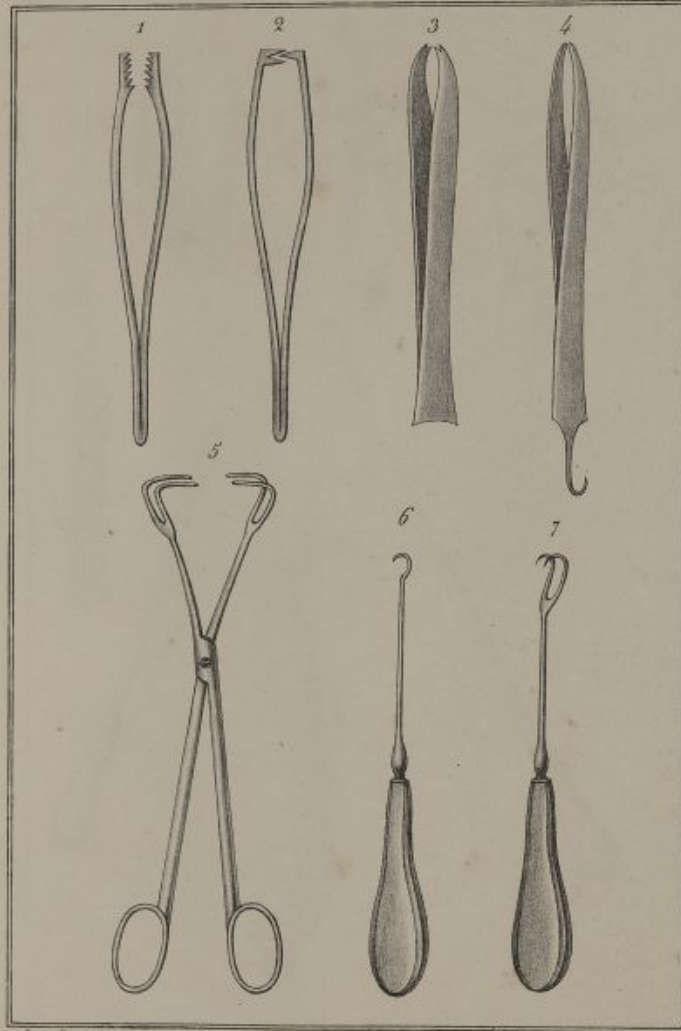




1865. Chez Delaunay, rue de la Harpe, 6, Paris.

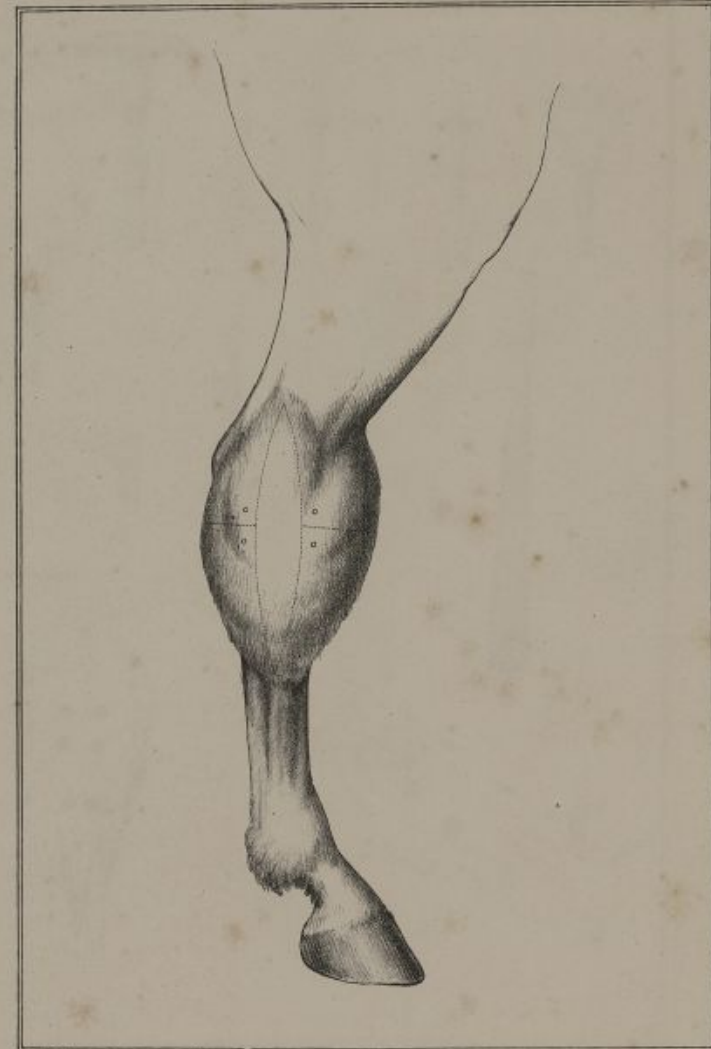


PL. VII.



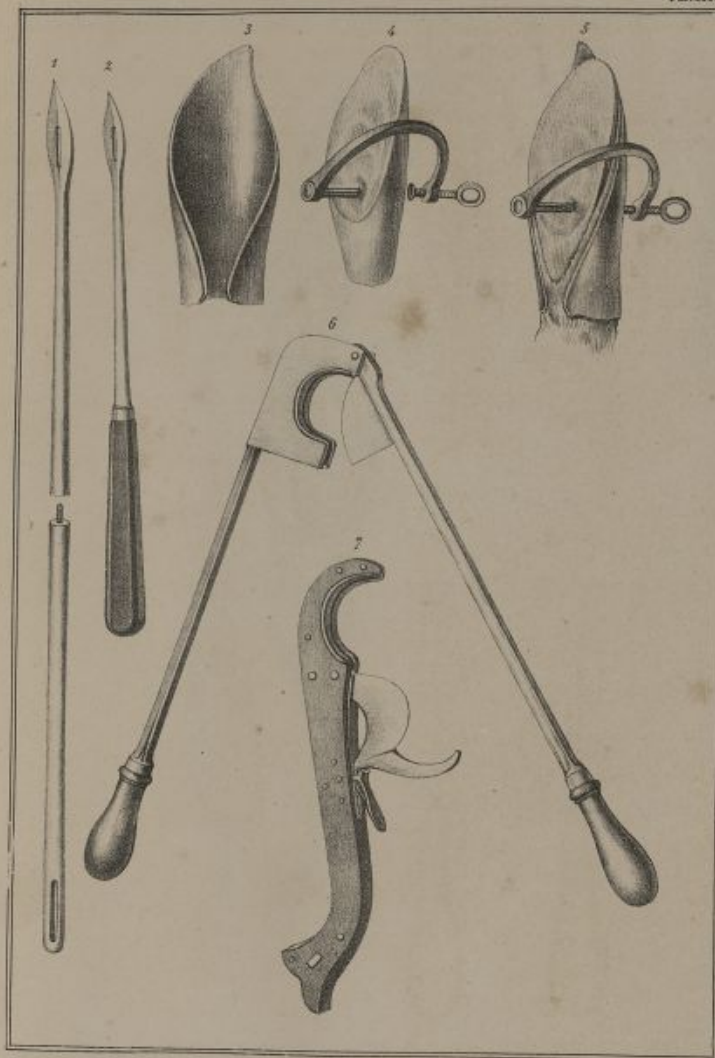
Lith. Caron-Delamarre, rue Macon, 6, Paris.

PL. VIII.



Lith. Caron-Delamarre, rue Macon, 6, Paris.

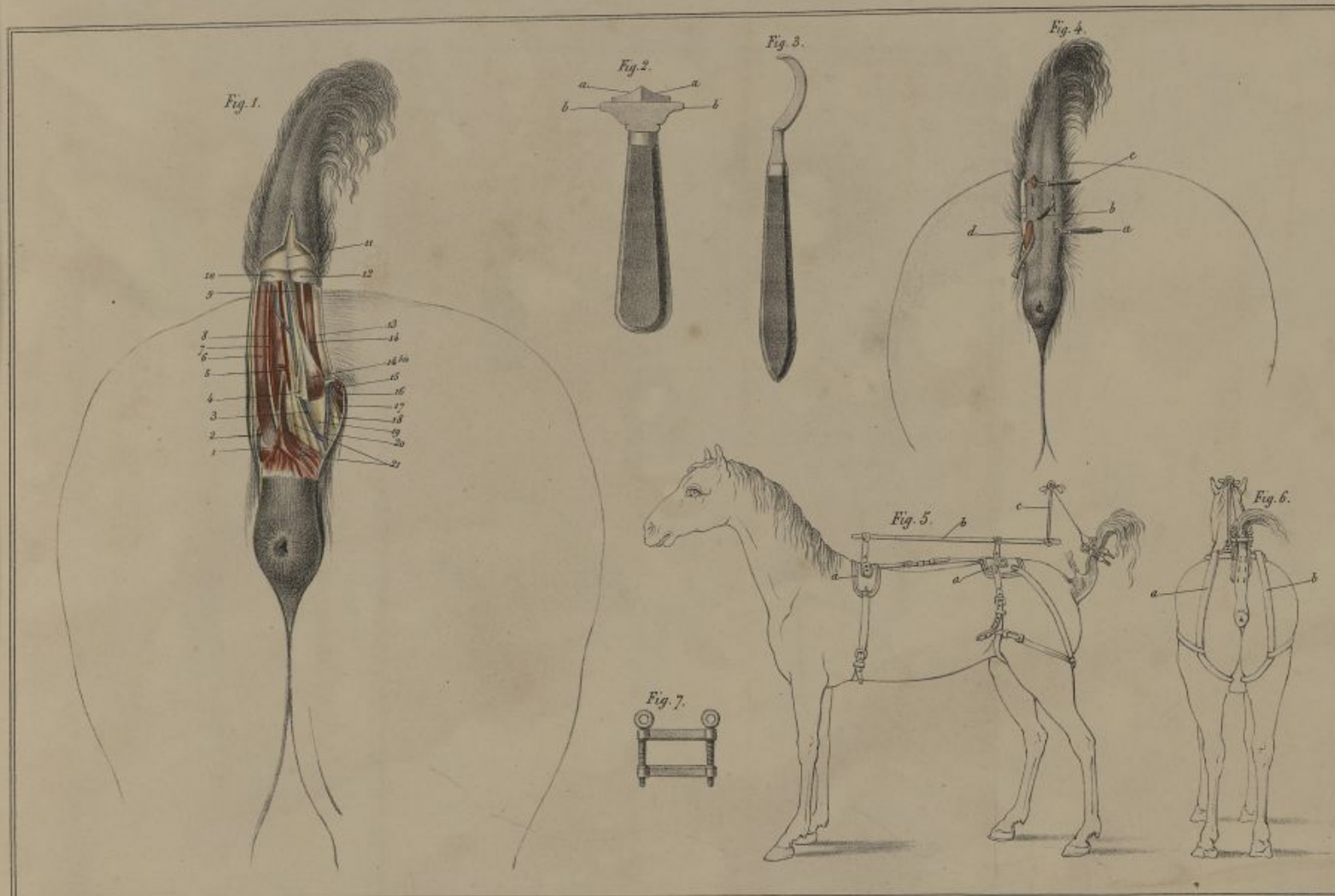
PL. IX.



PL. X.

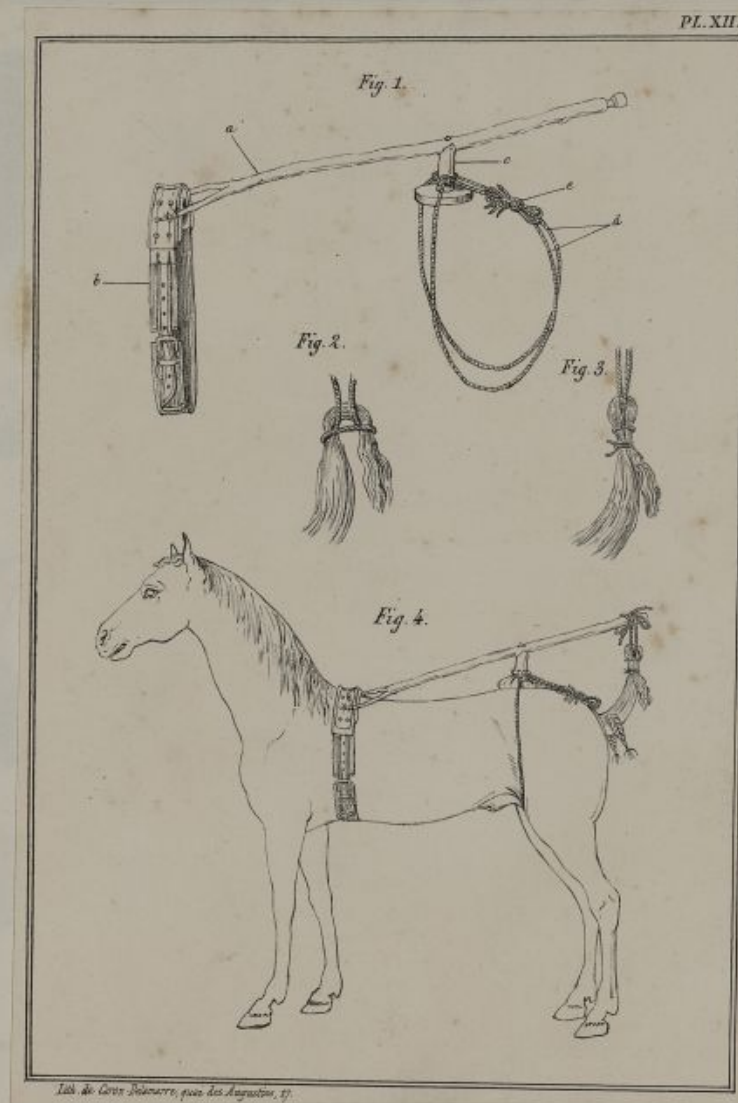


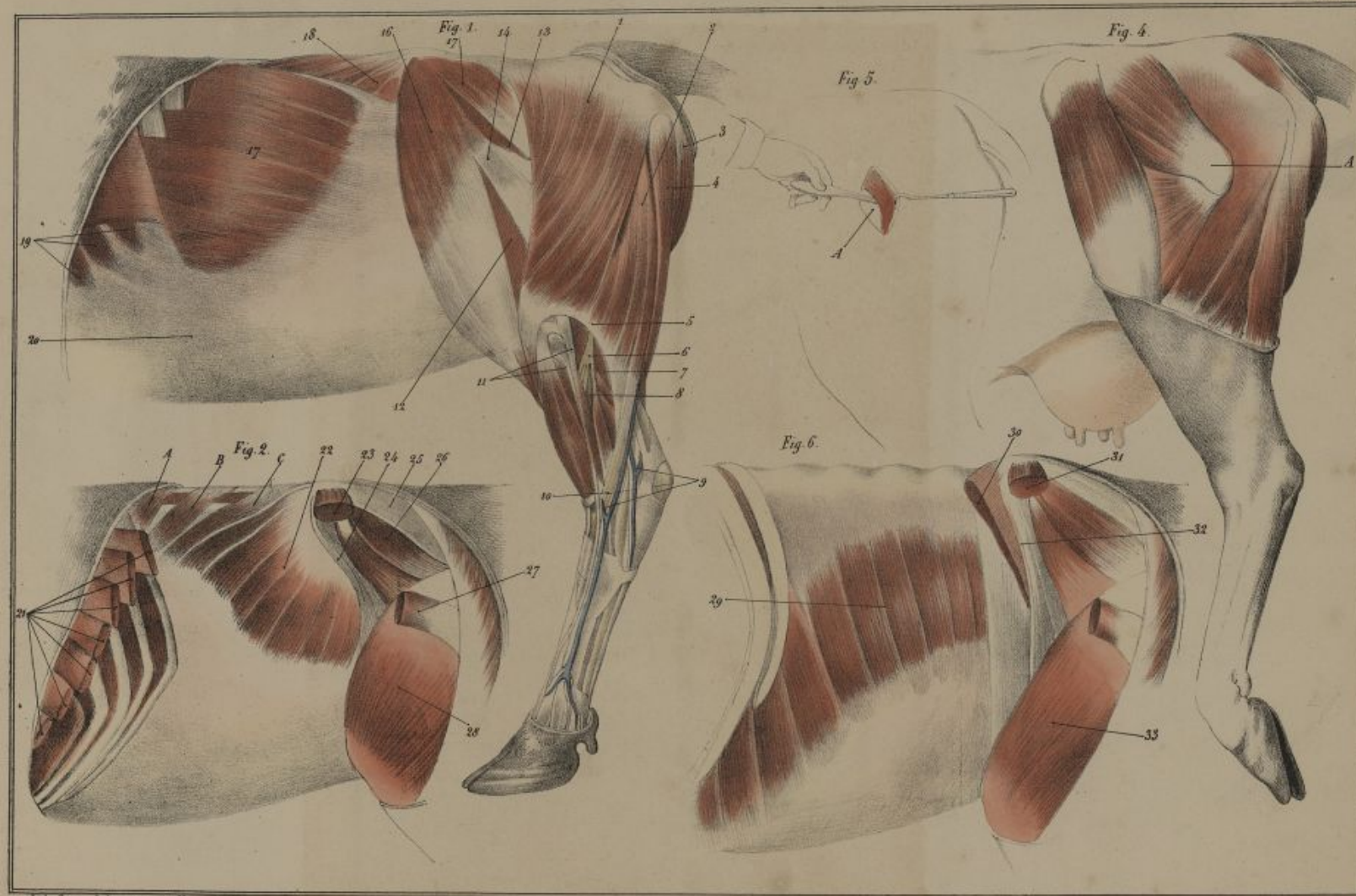
*Les. Caron. Delincent. par les Grands. Animateurs. et Paris.*

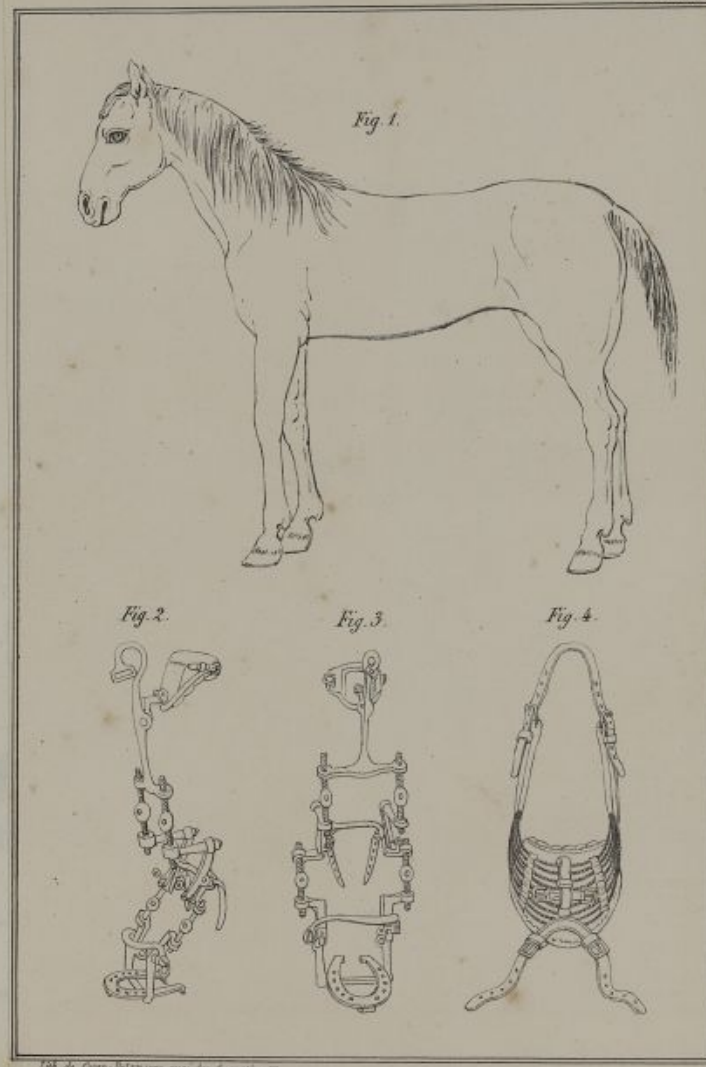


Lith. Caron-Delamarre, rue Macon, 6, Paris.



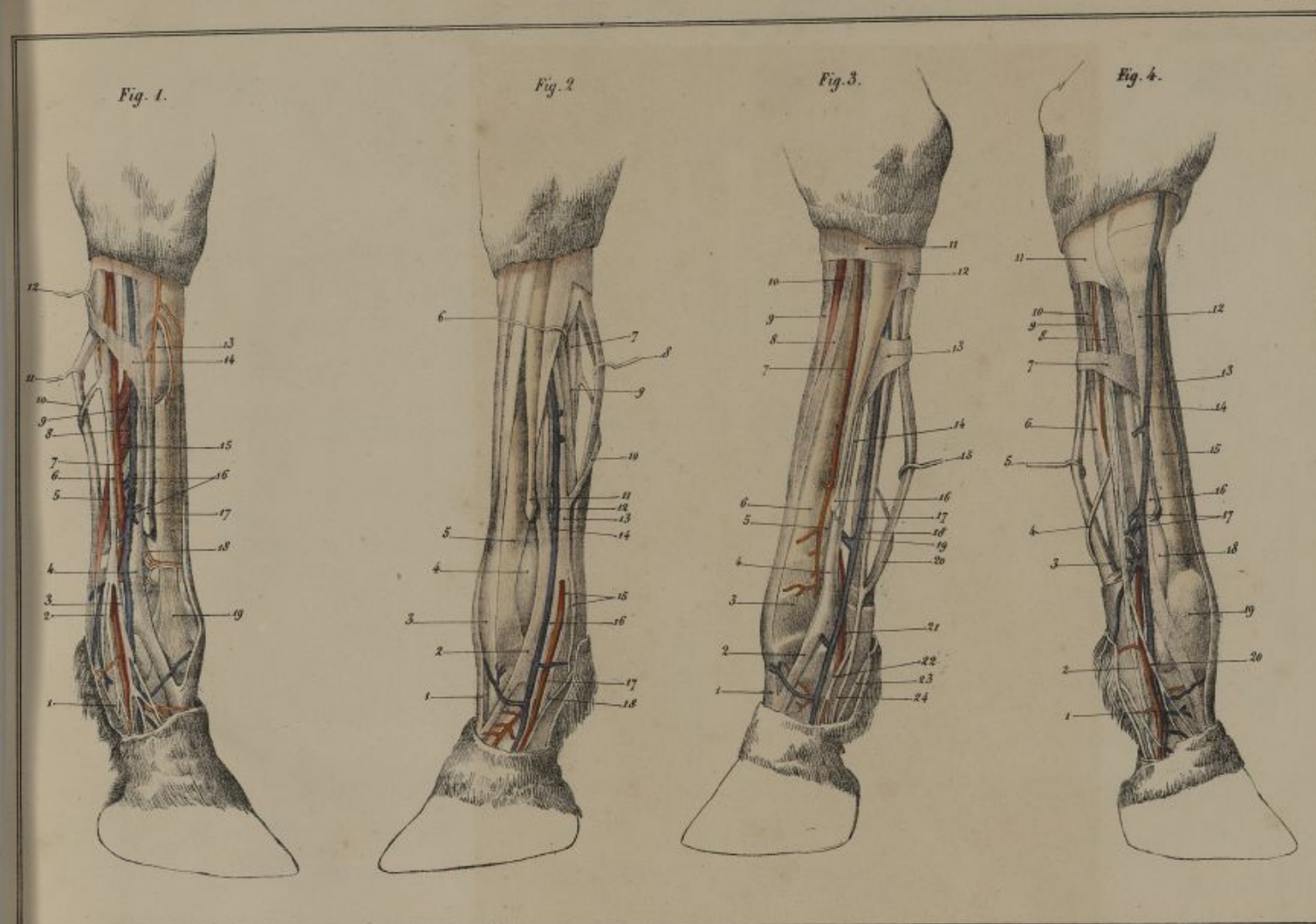




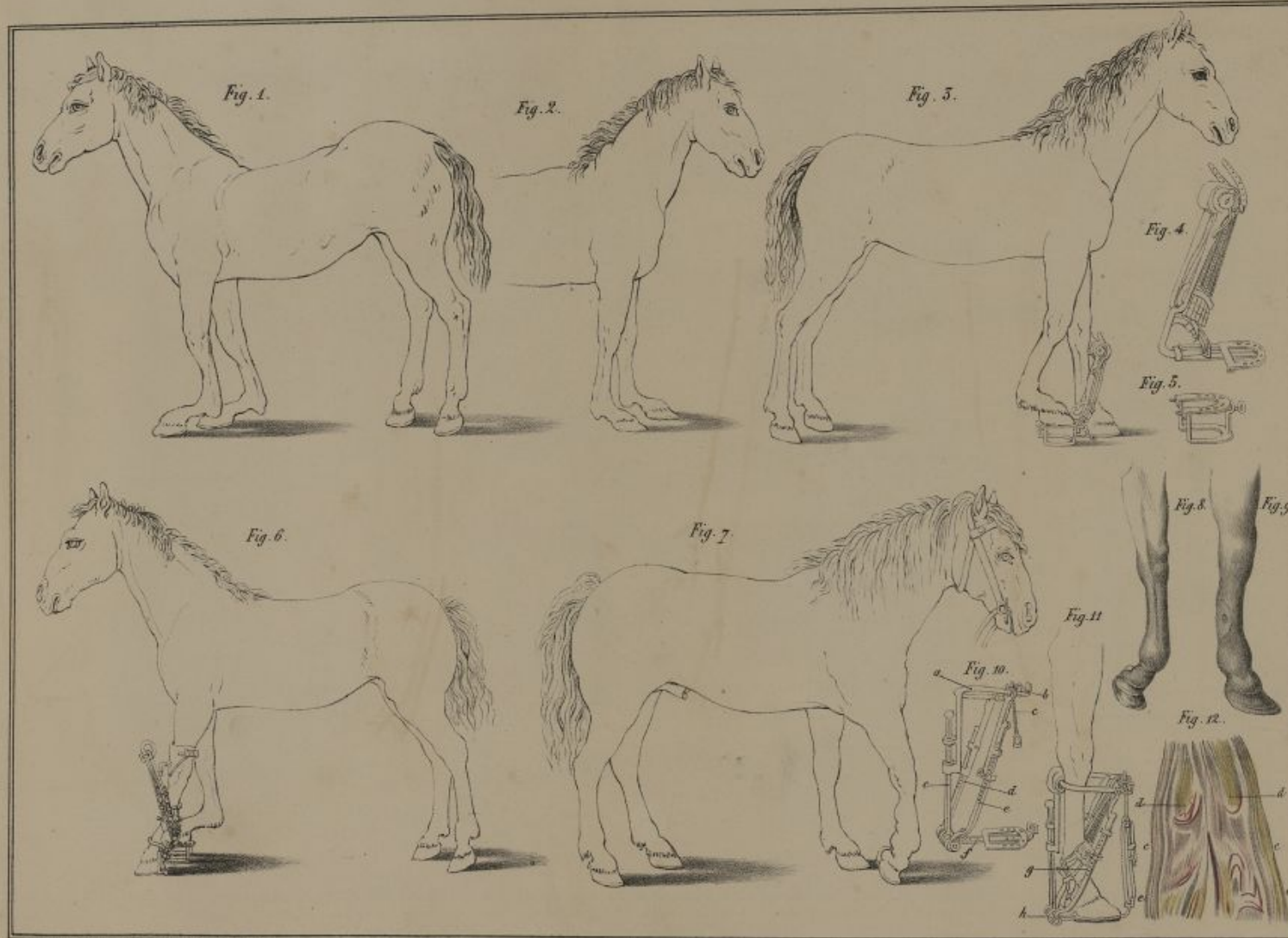


*Lib. de Cava. Soliman, quai des Augustins, 17.*

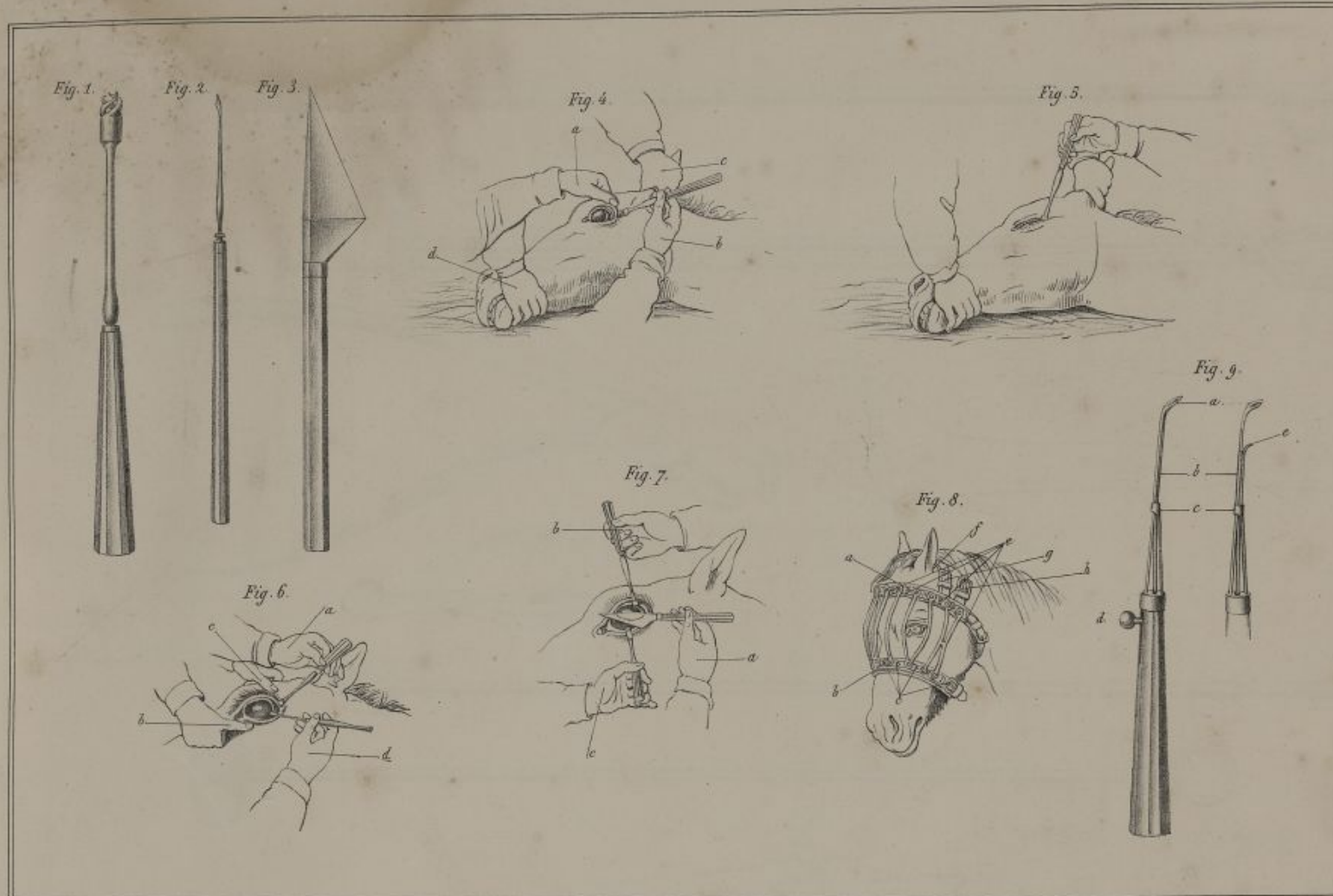




Lith. Caron-Delamarre, rue Macon, 6, Paris.

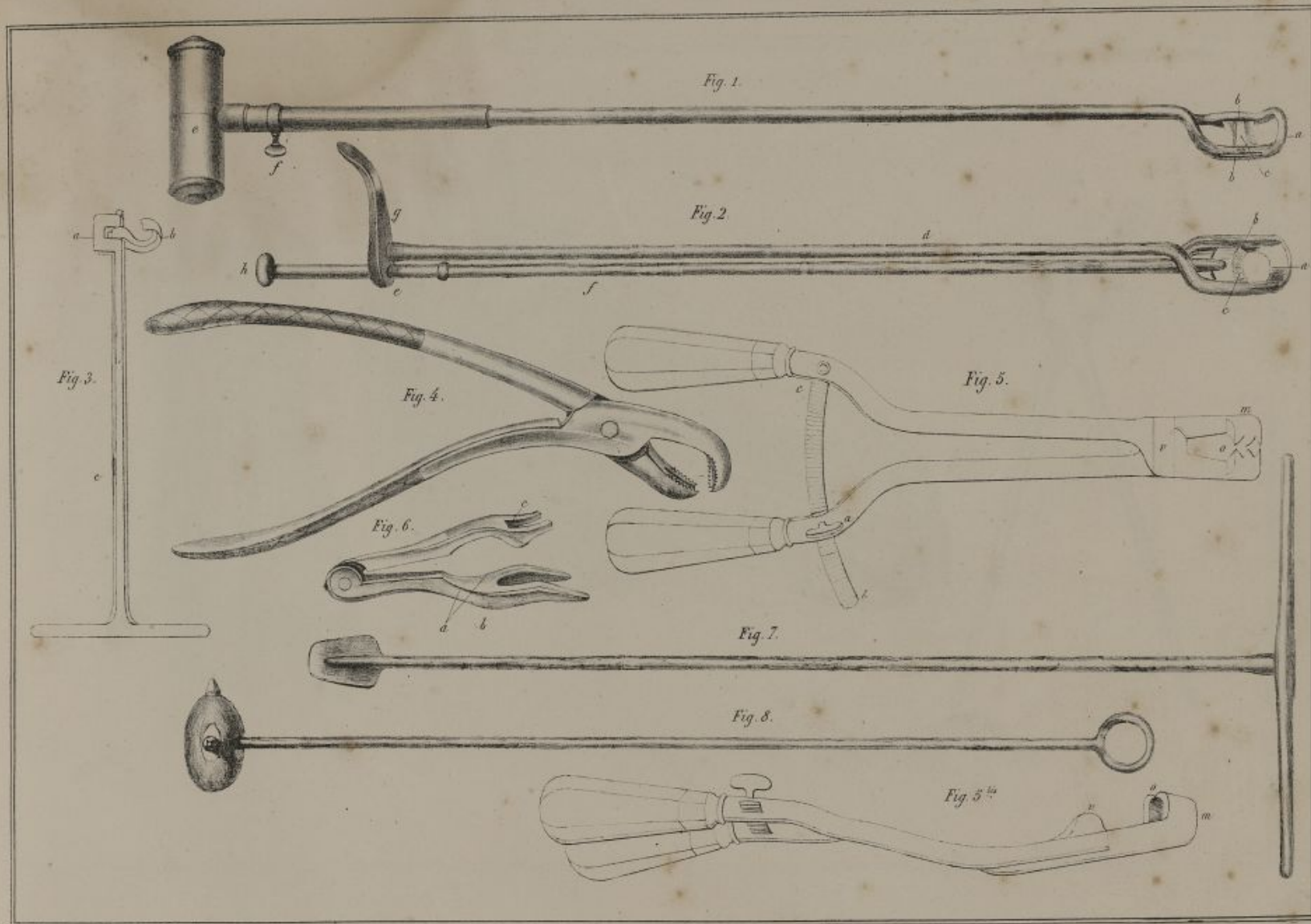


Jean-Louis-Caron-Delamarre, graveur des Augustins, 27

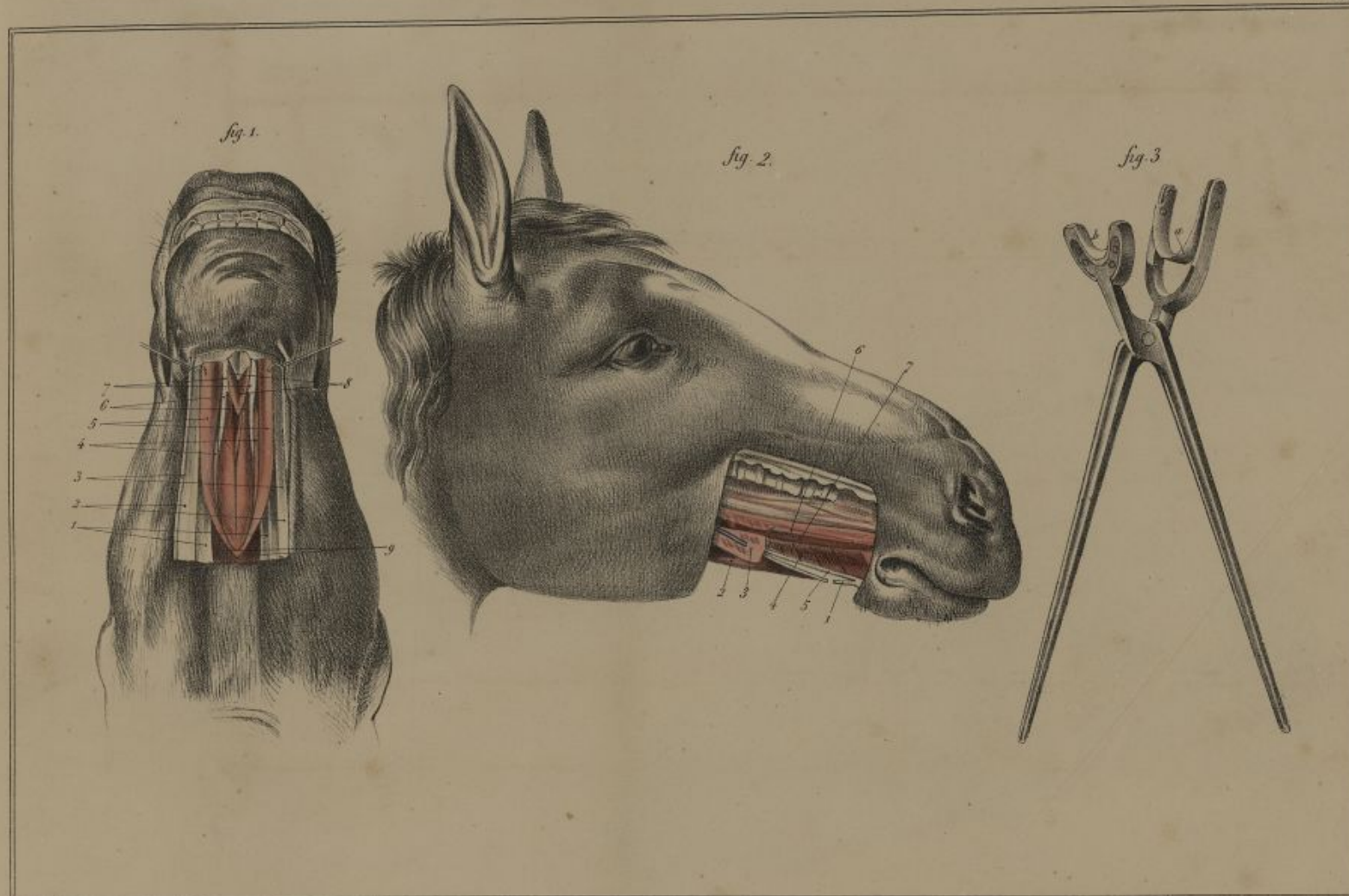


Lith. Caron - Delamare, rue Mazarin, 6, Paris.

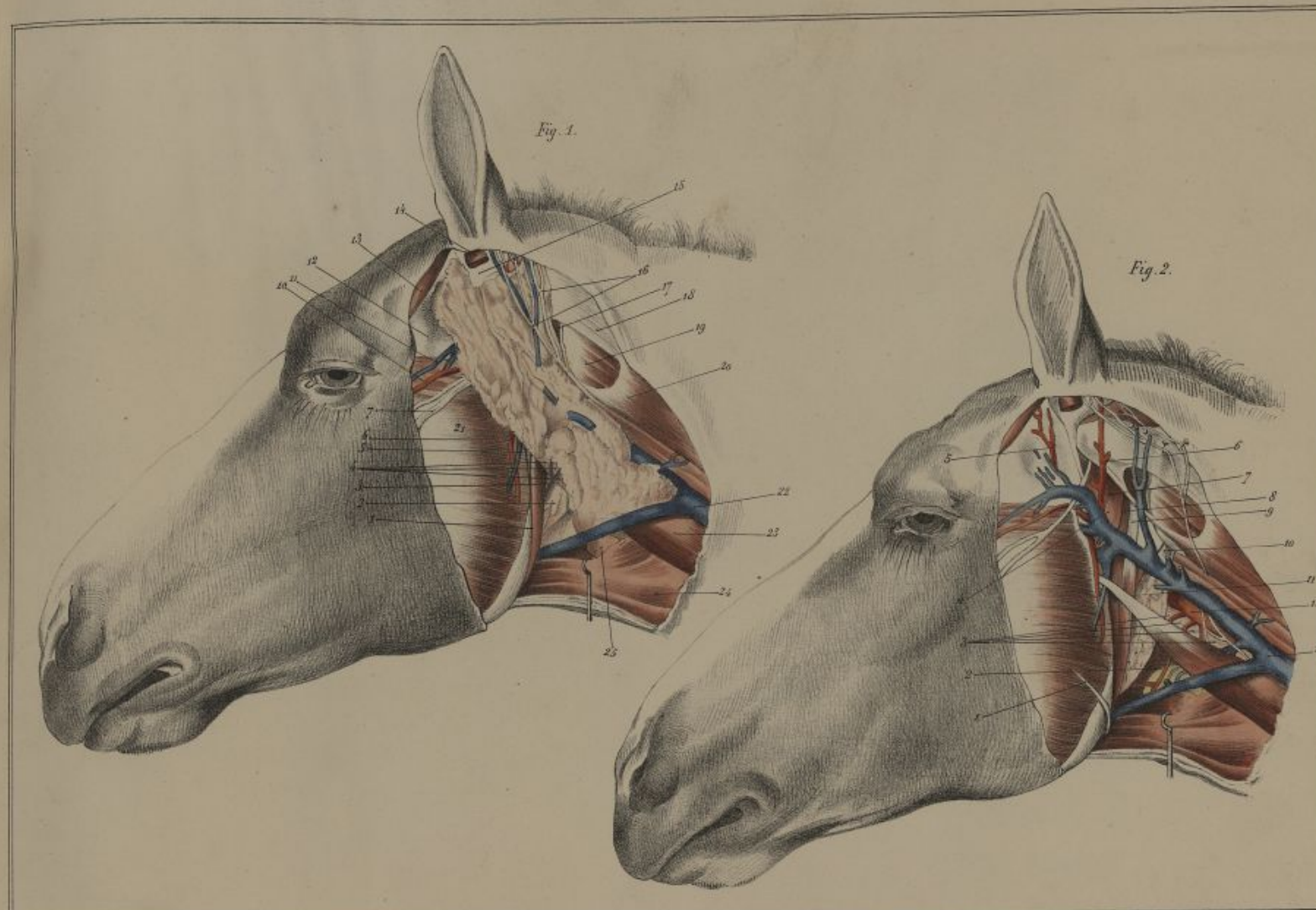




Del. Goussier. Sculp. J. B. 1789.

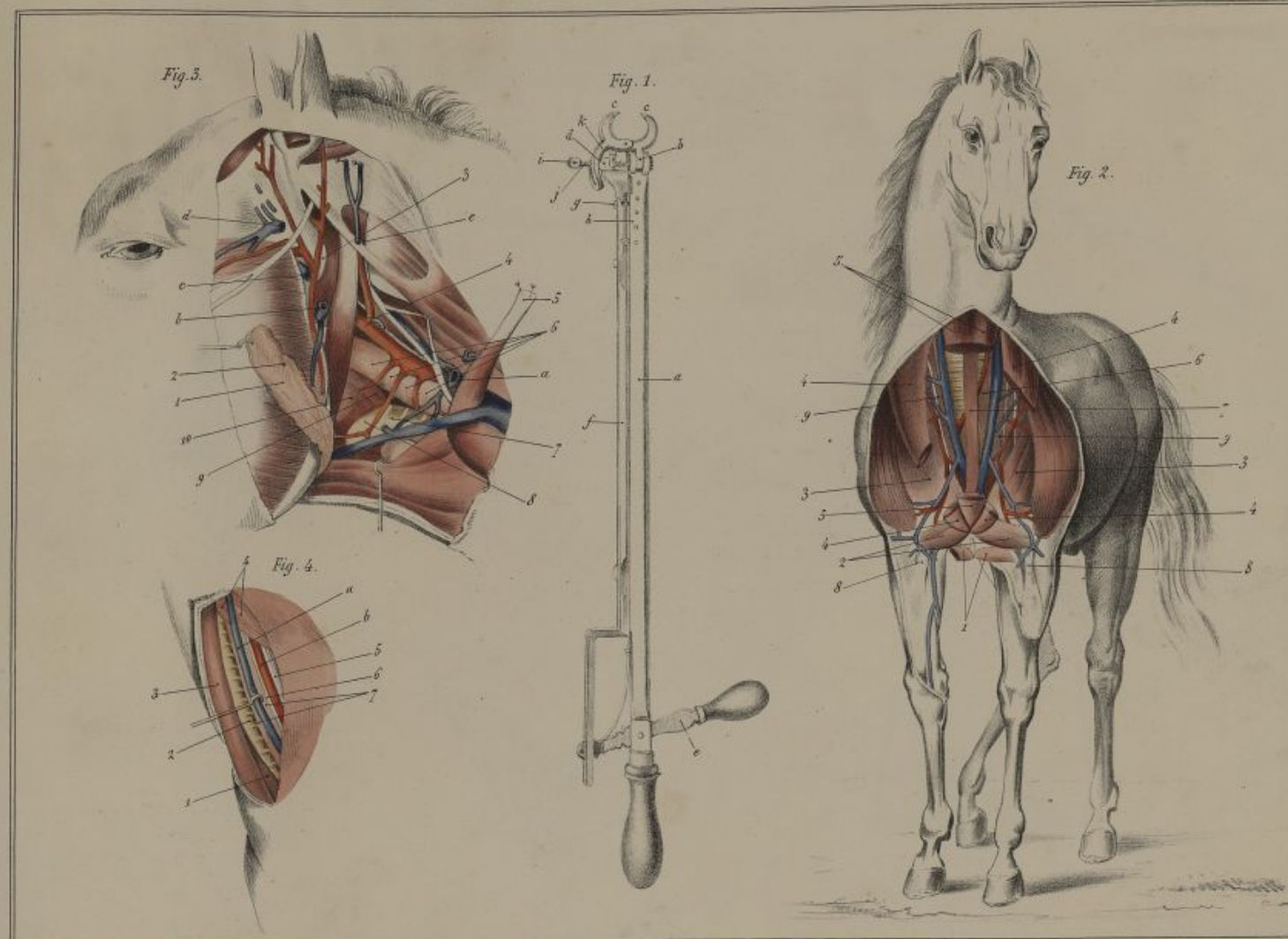


Lith. Goussier, Delacourte, rue de la Harpe, 10.

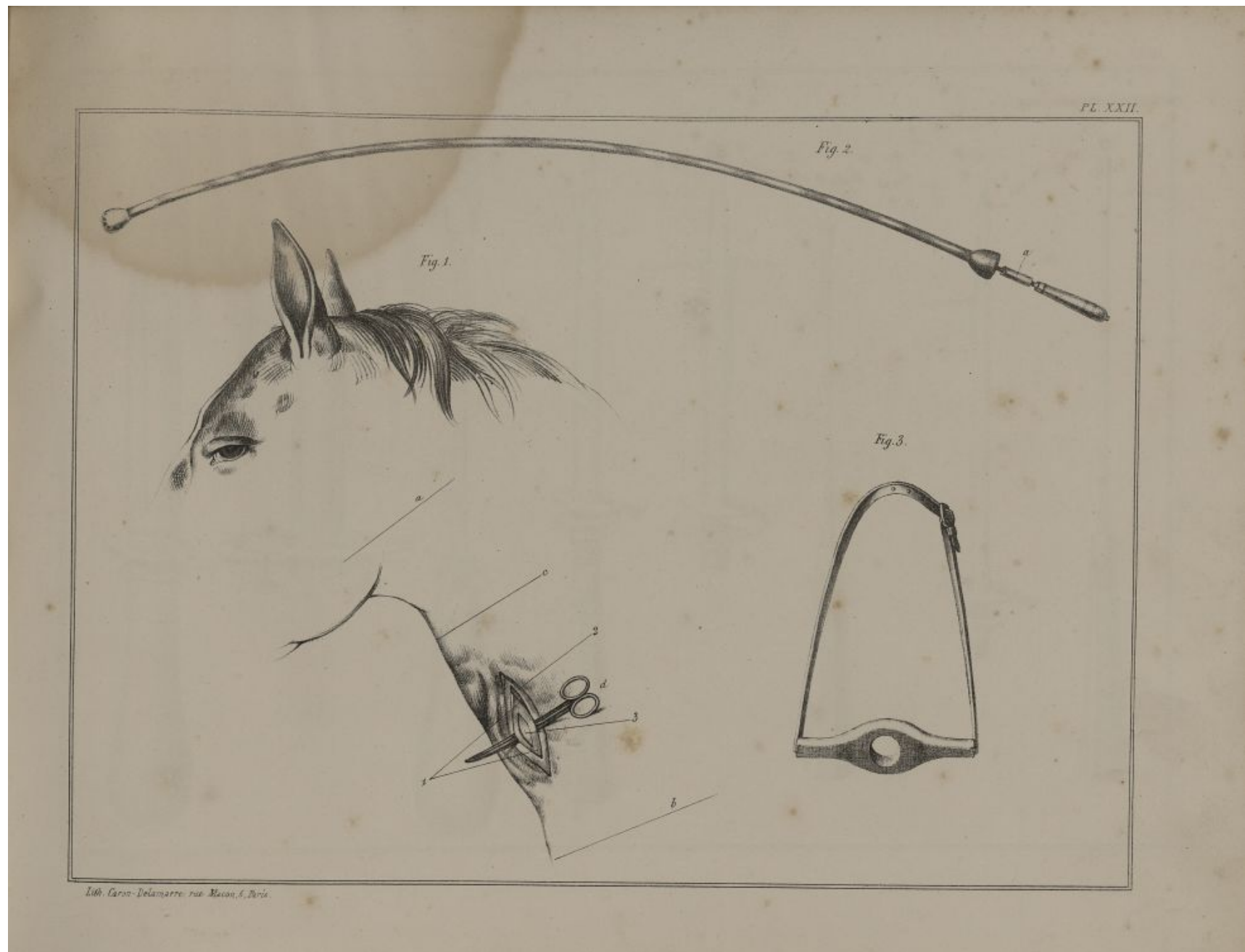


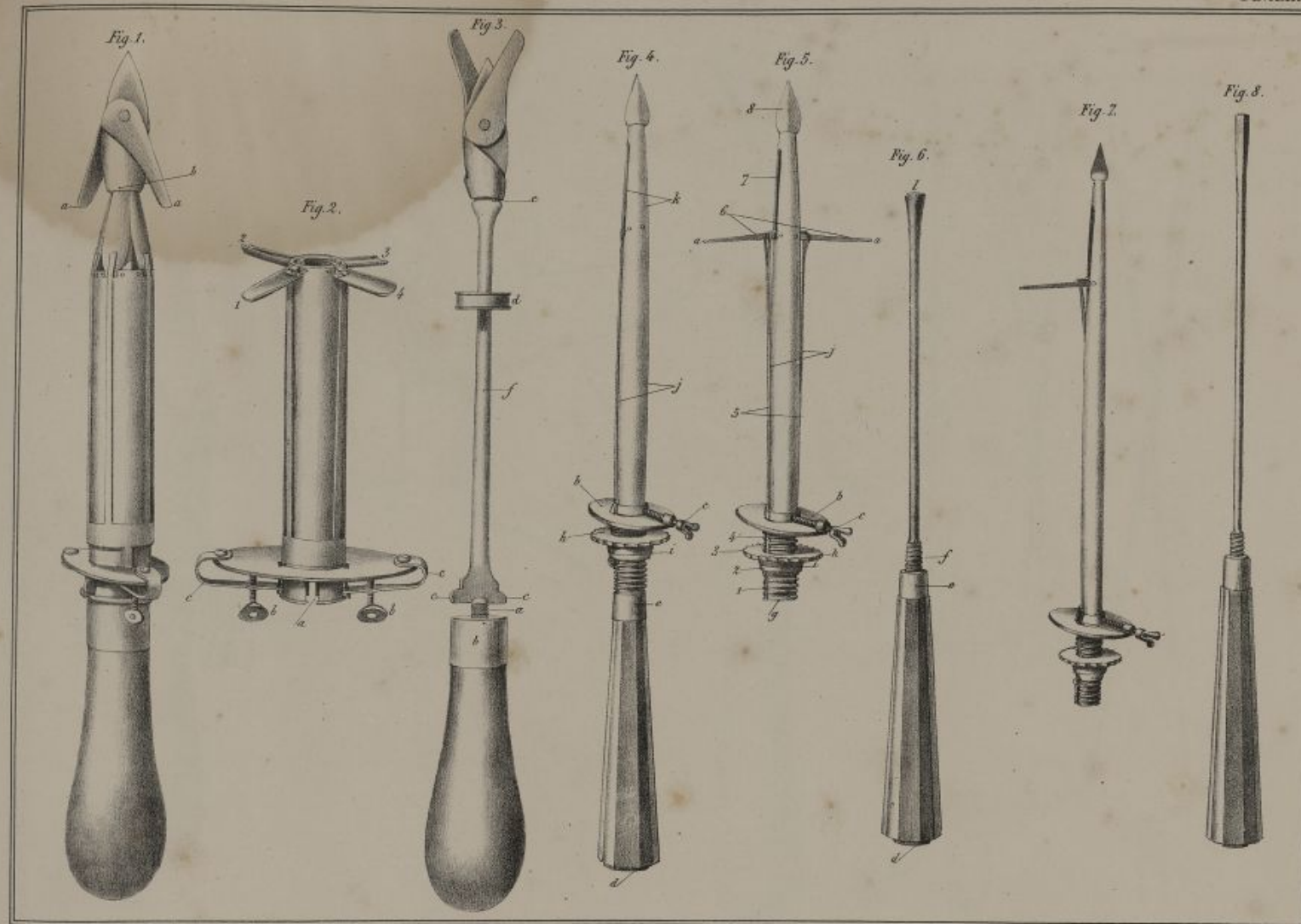
Lith. Goussier-Delormay, rue Malou, 5, Paris.





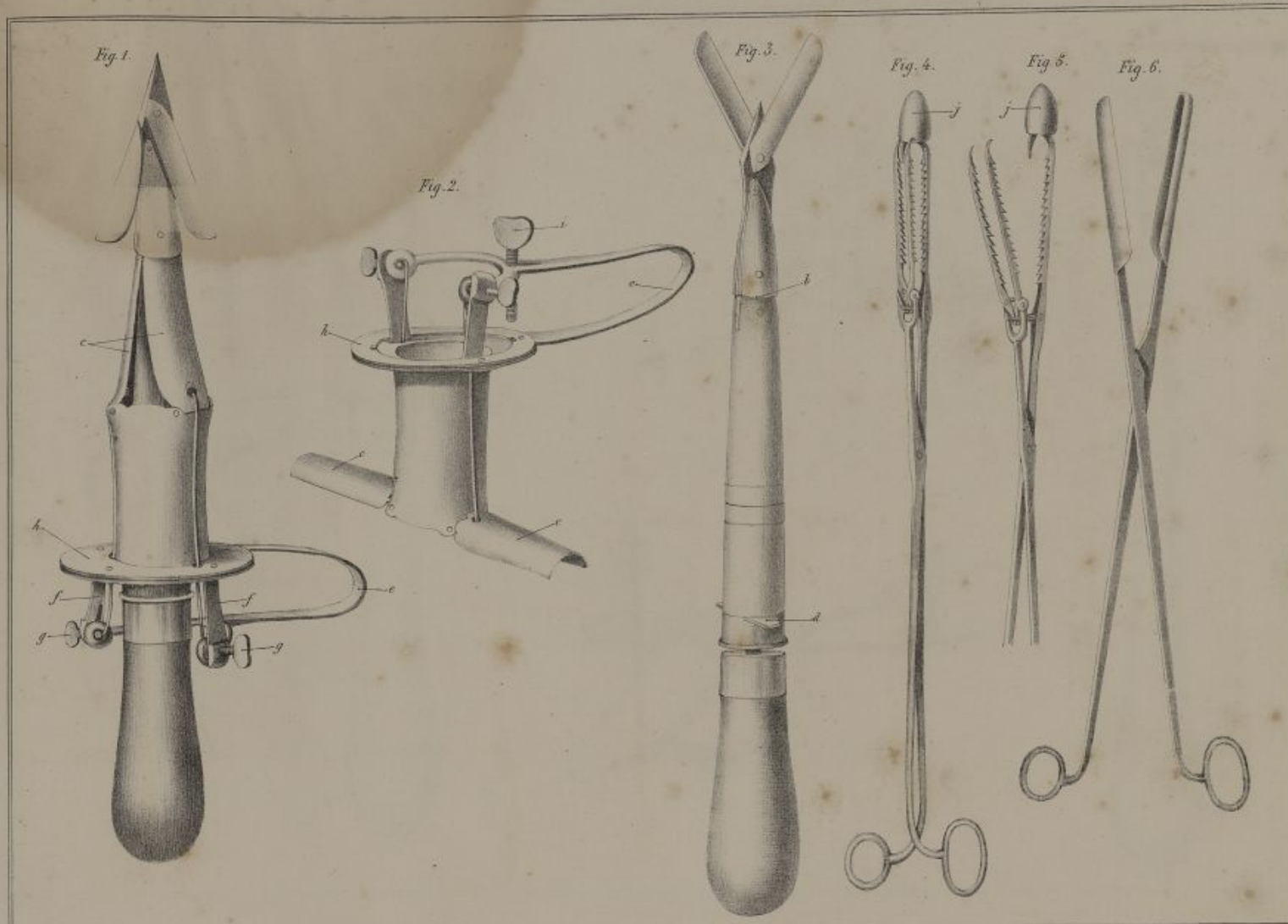
Lith. Caron-Delaunay, rue de la Harpe, à Paris.



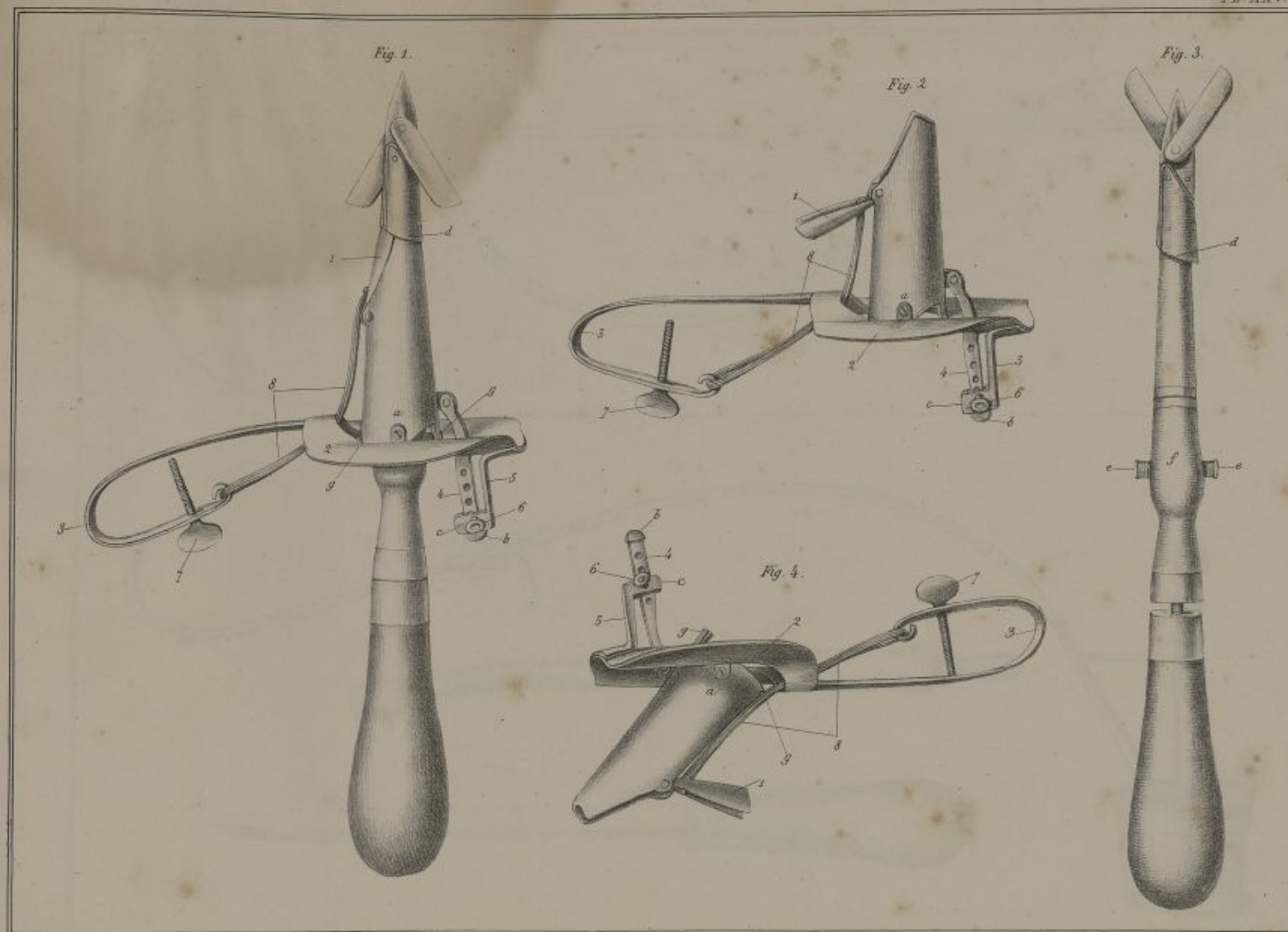


Edm. Goussier, rue de la Harpe, 6, Paris.

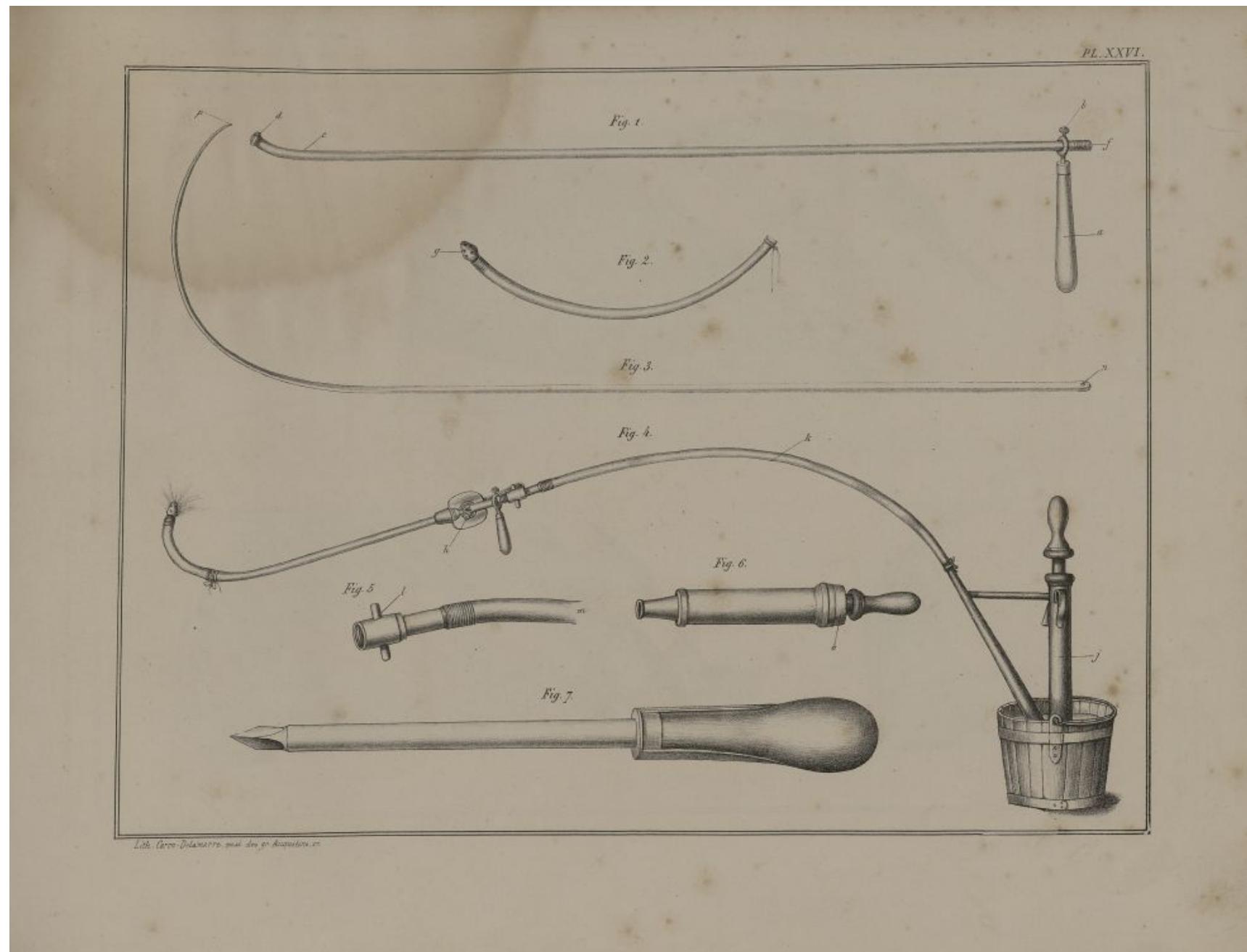




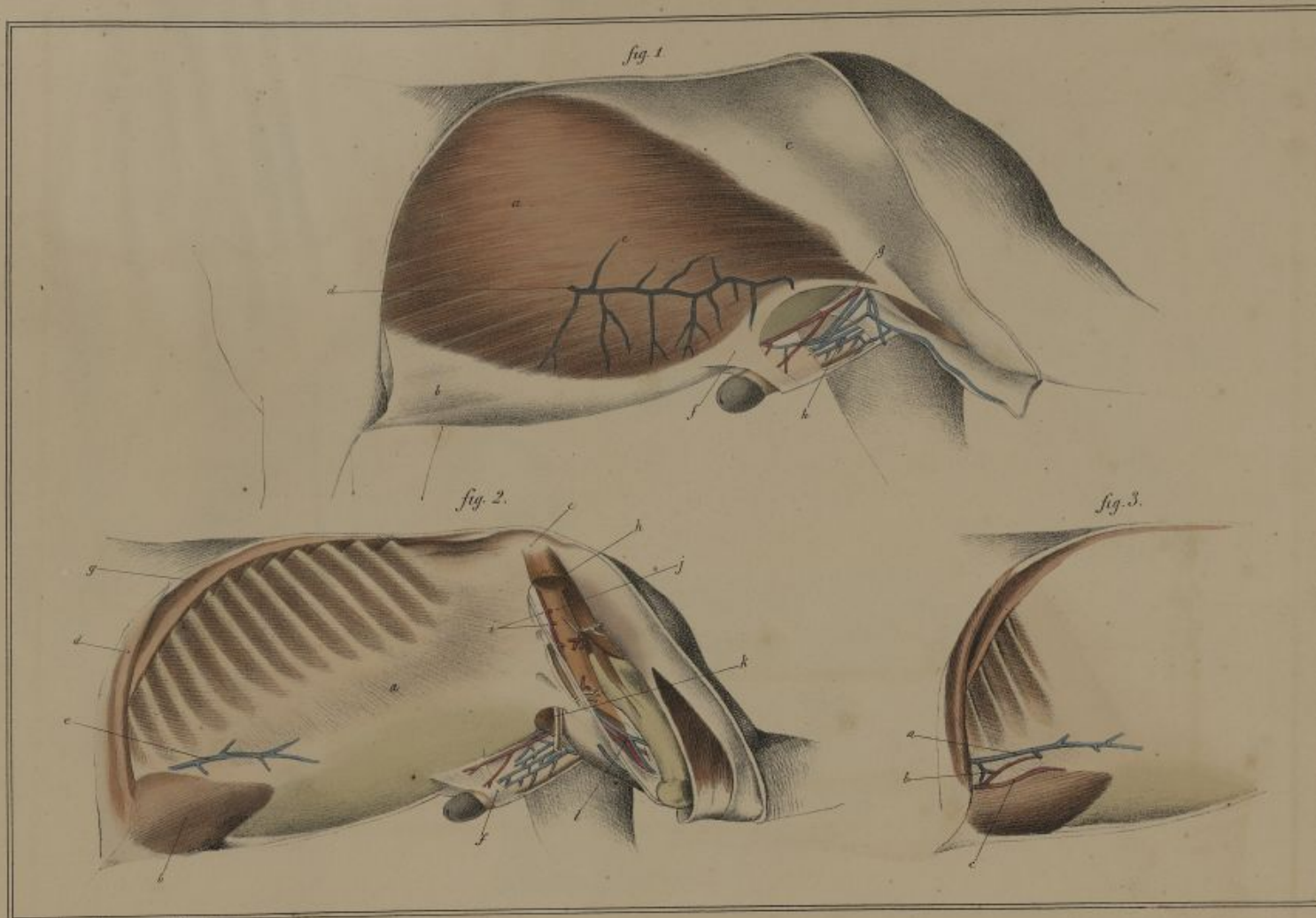
Lith. Larou-Bolamarre, rue Masson, 5, Paris



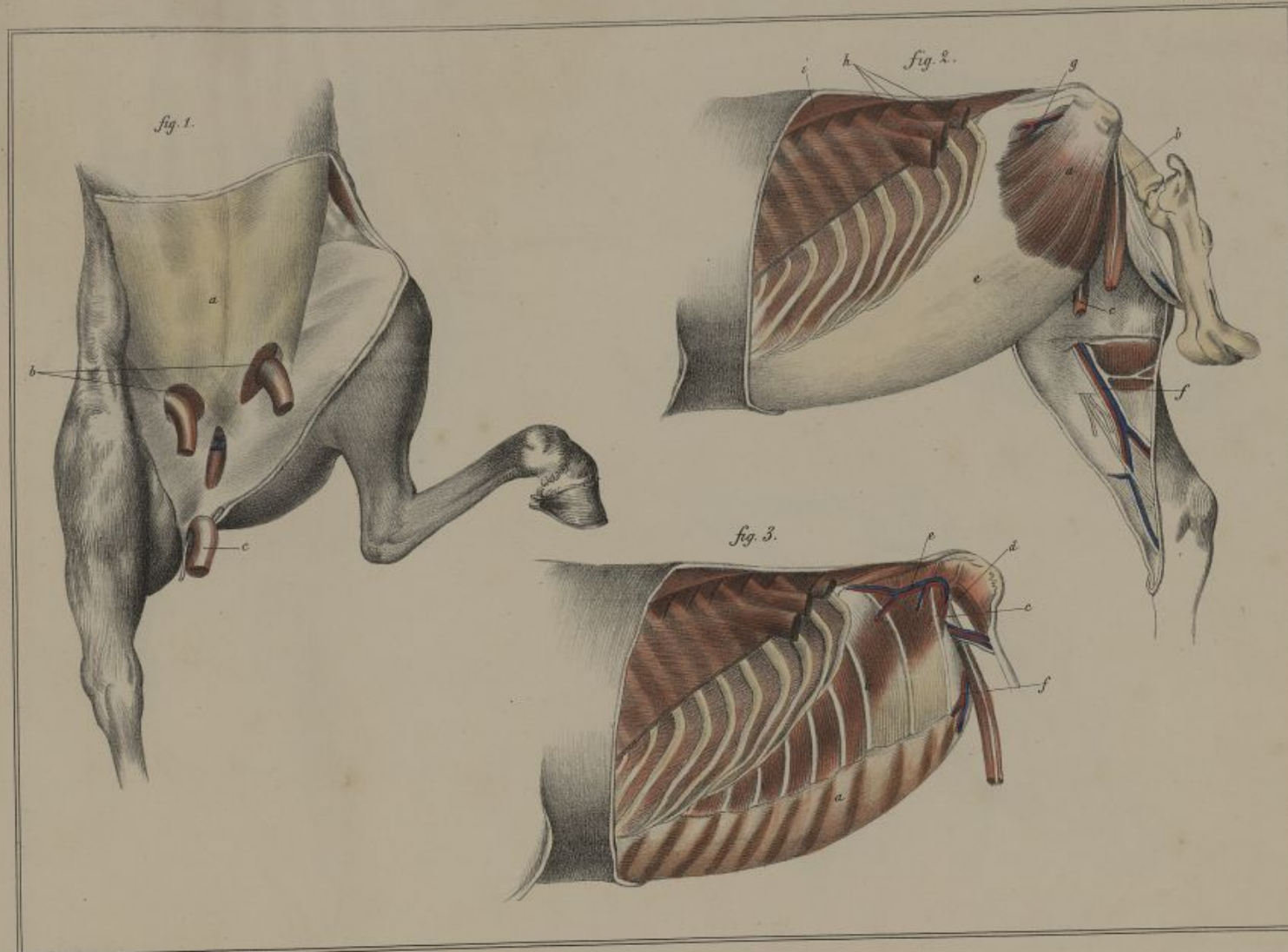
Libr. Caron Delamarre, Rue de Grande Augustin, 17, Paris



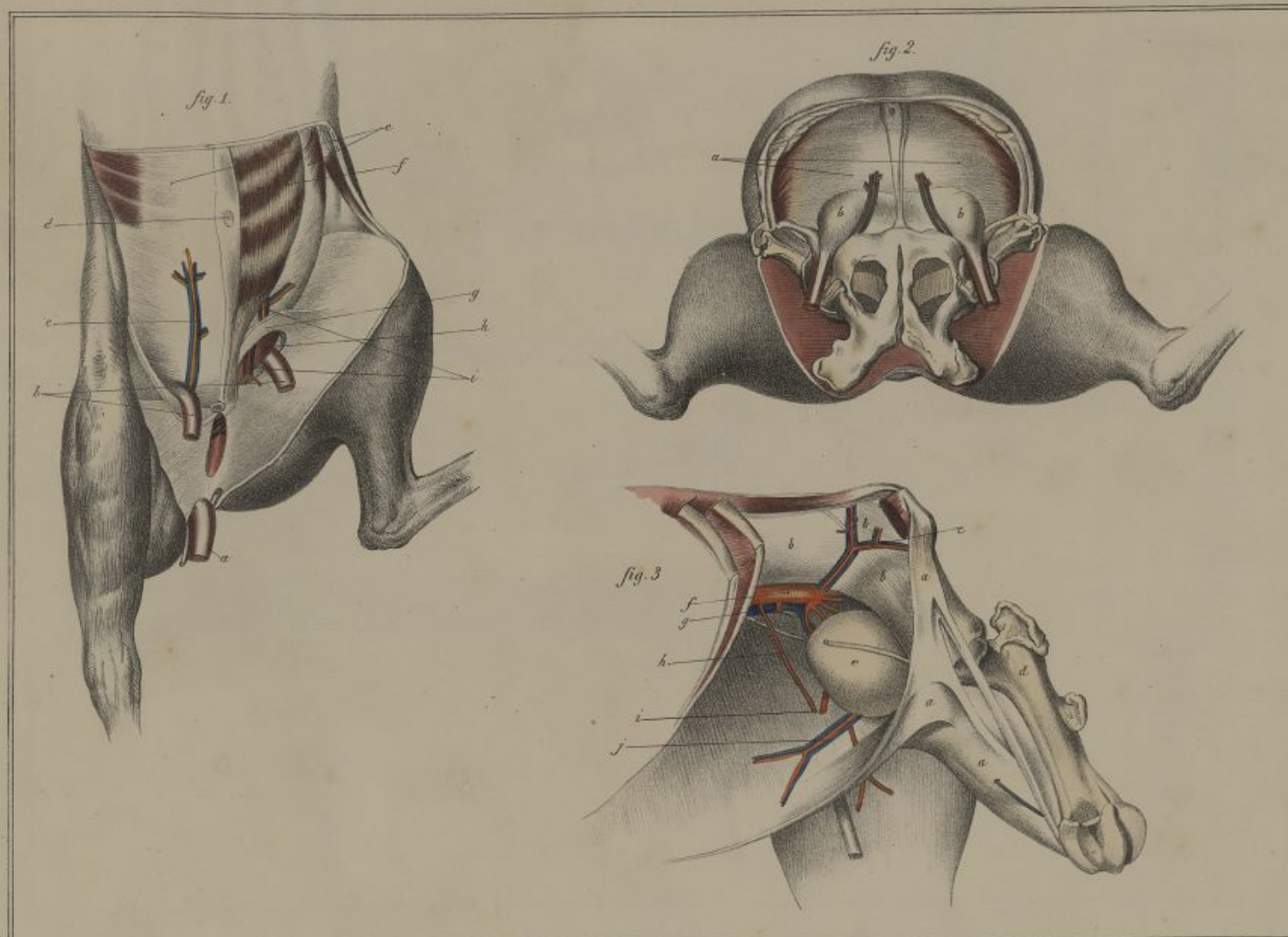




Del. Caren Delamarie. rue Mazarin, 8. Paris.

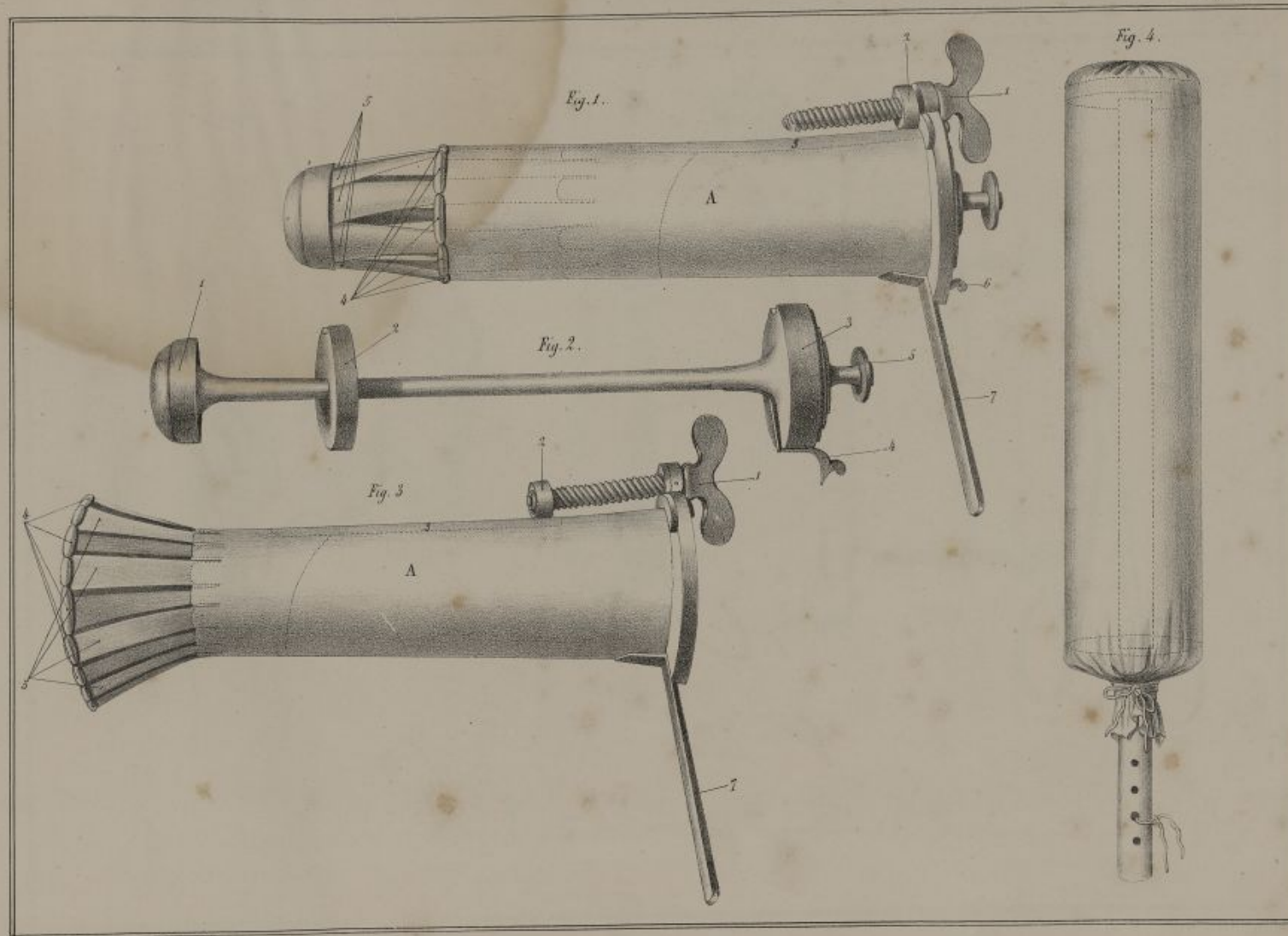


Lith. Caron-Delamarre, rue Maçon, 6, Paris.

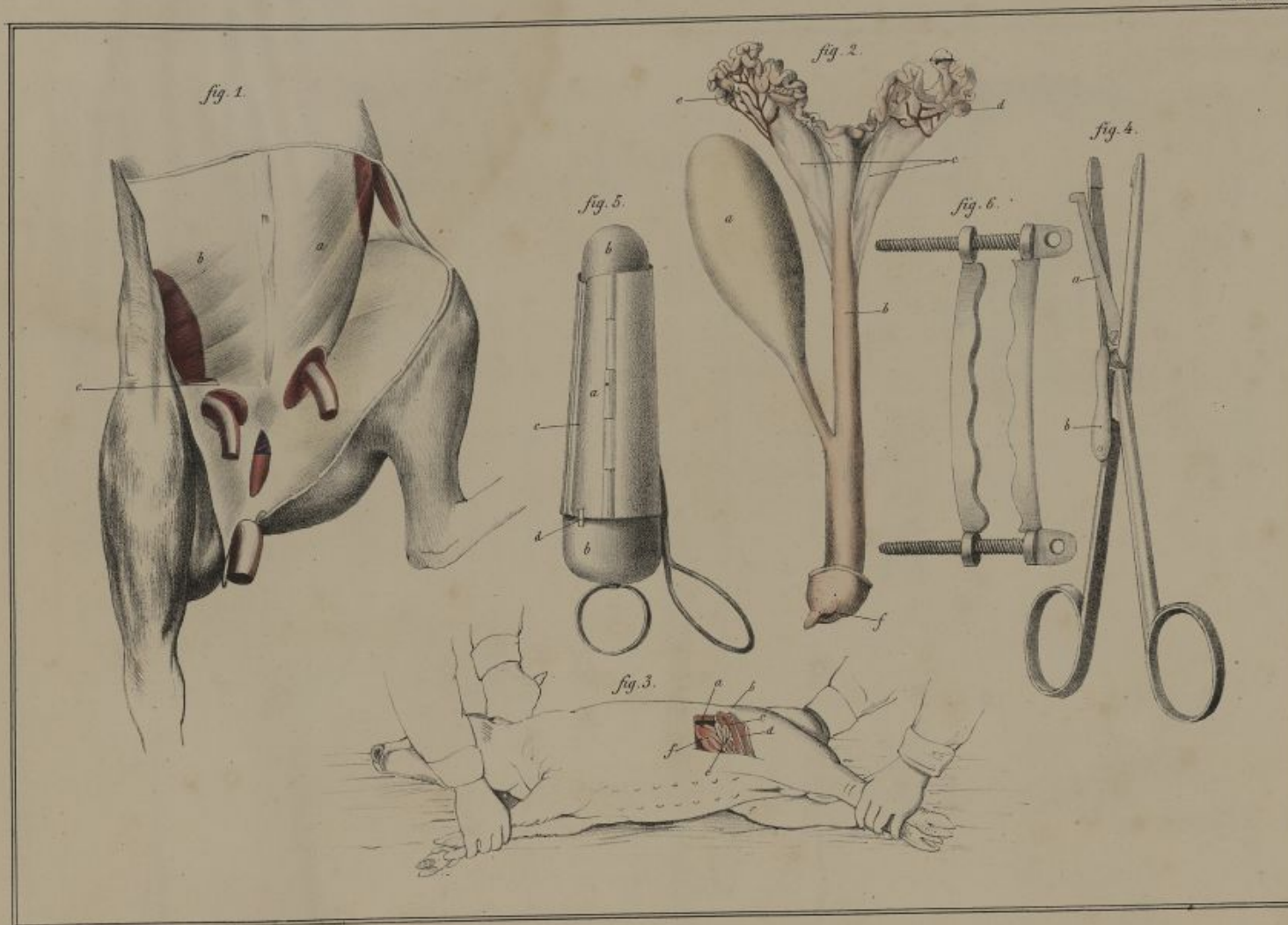


Lith. Goussier-Delaunay, rue. Mazarin, 6. Paris.

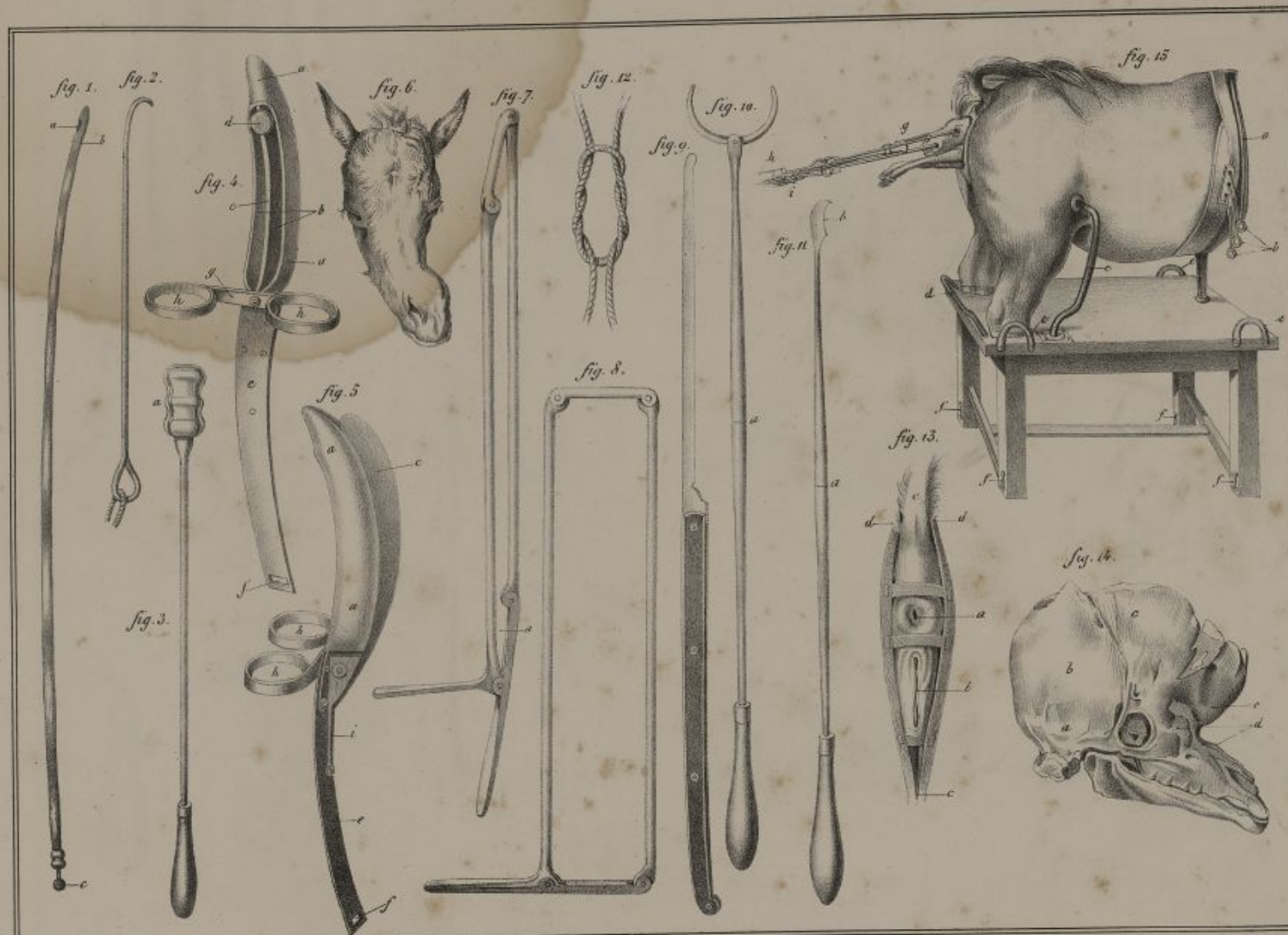




Lith. Caron-Delaunay, rue de la Harpe, 6, Paris.

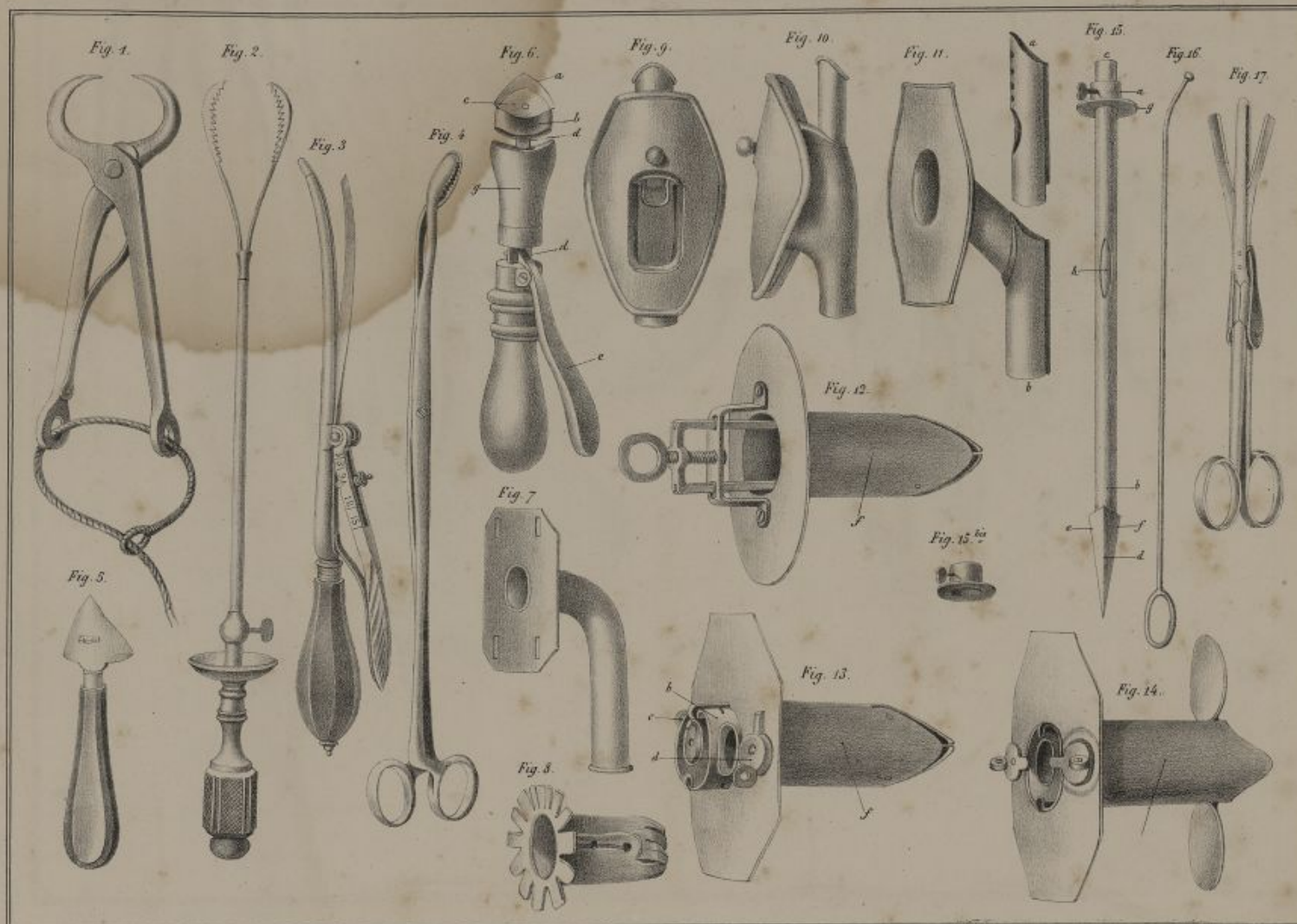


Lith. Caron-Delemarre, rue Maceo, 6, Paris.



Lith. Goussier-Delamarre, par les soins de M. Brogniez.





Lith. Girou-Delaunay, Quai d'Orléans, 17.

Fig. 1.



Fig. 2.



Lith. Caron-Delamare, quai des Augustins, 17.



*Tab. Carus Delatorre, Vasa & Angustia, 17.*



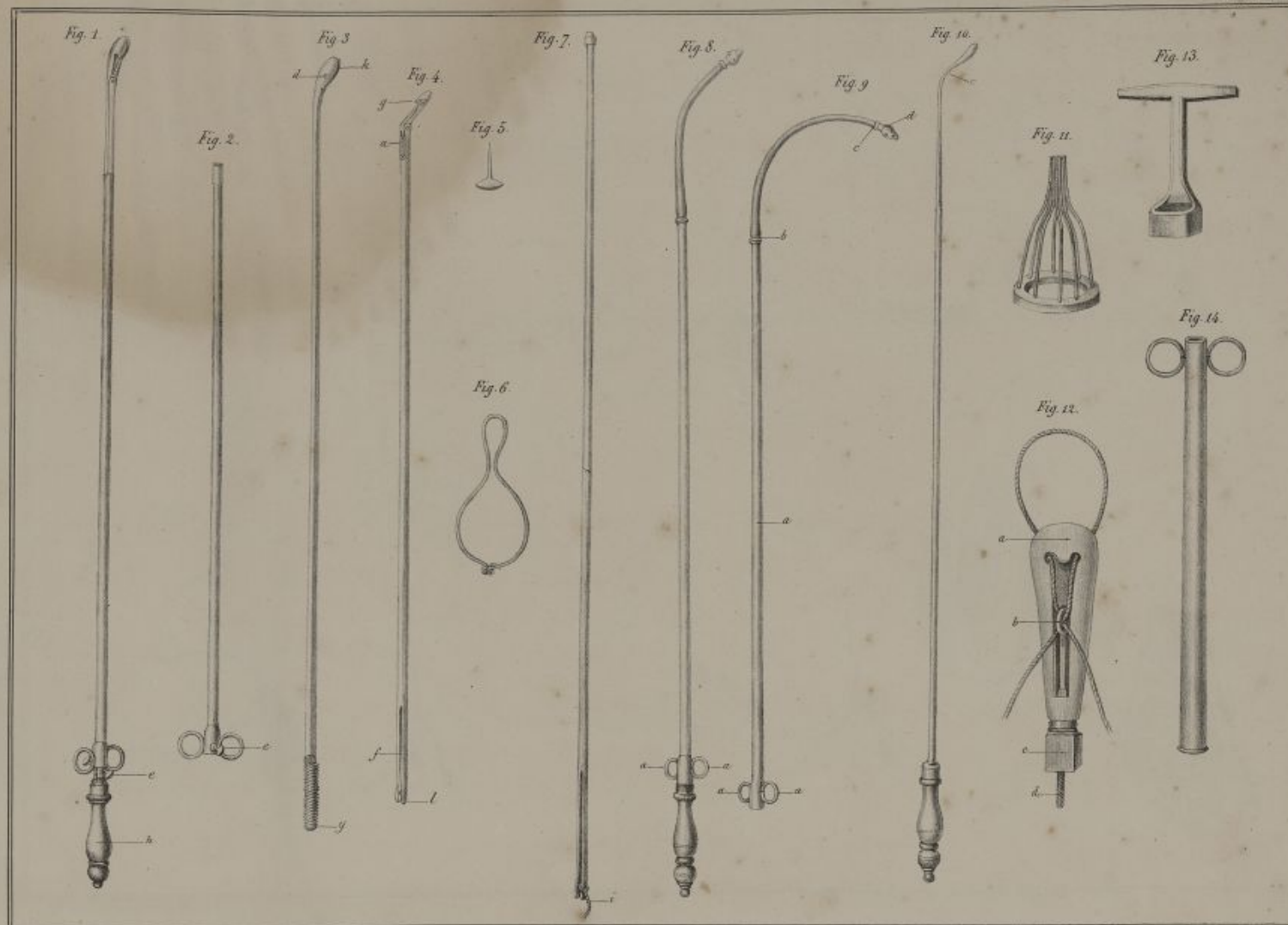
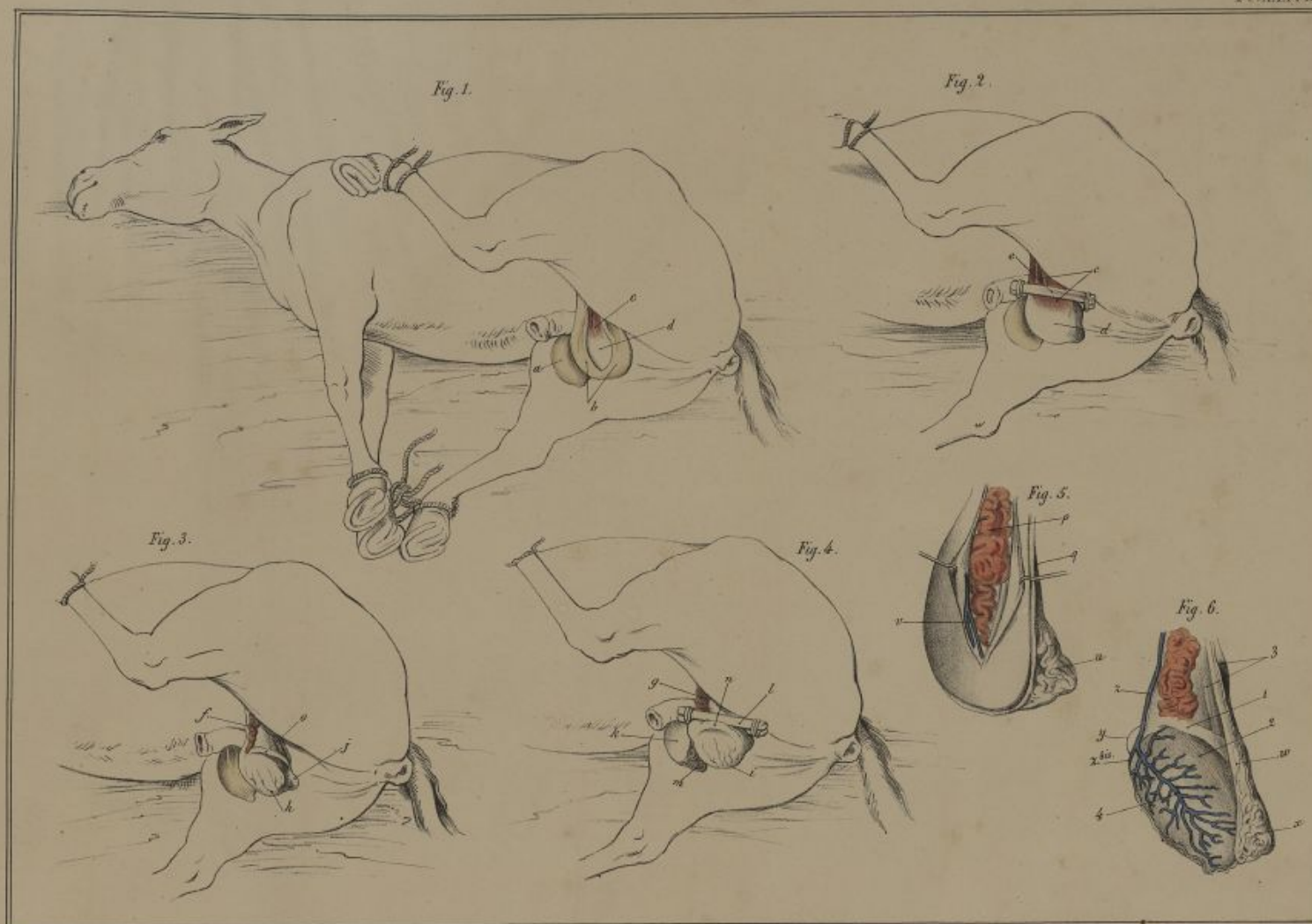


Fig. 1. Form de l'instrument pour les os de la tête.



Lith. Goussier-Delamarre, rue Moussin, 6, Paris.











